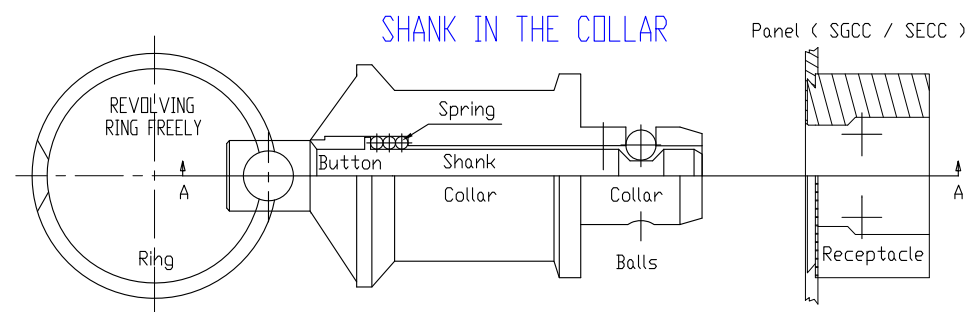


UN-FASTENED BEFORE USING IT PUSHING THE BUTTON BY FINGER



Suggestion Mounting Panel Hole Dia. = 7.00 +/- 0.02 MM

RETURN UN-FASTENED AUTOMATICALLY AFTER FASTENED BY FINGER

NOTE :

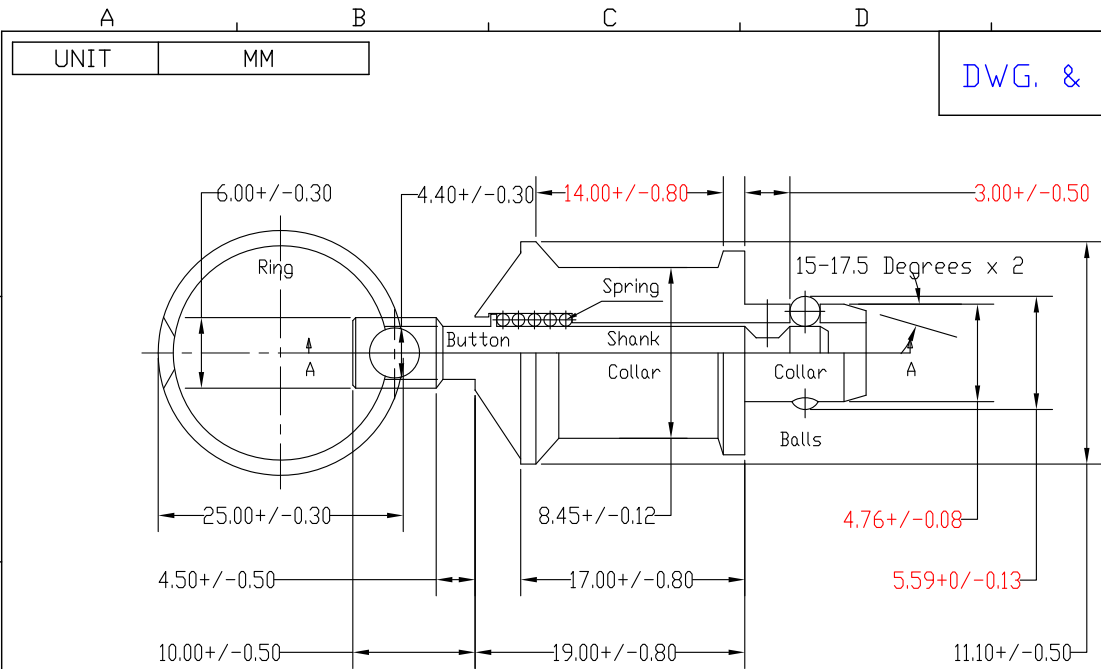
KEY-STYLE-QUICK-RELEASE-PINS (SINGLE-ACTION-PINS - 2 BALLS)

< WITH ATTACHED RECEPTACLE >

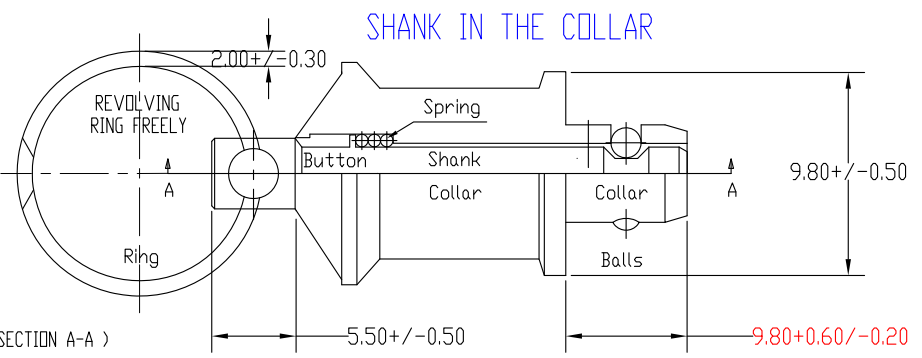
Specification : Dia. 4.76 x L. 39.50 MM
 Button, Shank, Collar, Receptacle for M'tls : SAE1215MS Steel + Nickel Plated.
 Balls, Spring for Materials : SUS 304 +
 Finish : Passivated + Resistance Rust.
 Ring for Materials : SAE 1008CHQ Steel +
 Finish : Nickel Plated In Surface.
 Mini. Tension Load Capabilities = 22.60 N.m (200 Lbf) = 90.91 Kgf.
 Calculated Double Shear Strength =
 Approx. 1,200 Lbf = About 545.00 Kgf.
 Installation Hole = 4.88 +/- 0.05 MM.
 Panel Thickness = 0.8 Until To 2.0 MM.
 Panel Hardness = 150 HV or Less.
 (For Cold-Rolled-Steel Used.)
 Suggestion Mounting Panel Hole Dia. =
 7.00 +/- 0.02 MM For SGCC / SECC.
 Being Accompanied By European RoHS
 Latest Standard in 2,013 Year !

Tengscrew Co., Ltd.				CLIENT'S NAME			
PART NO.		BLP-3DN7182		Approval No.		Part No.	
NAME		KEY-STYLE-QUICK--RELEASE-PINS (2 BALLS)		APPROVED		Johnson	
TOL. ±		1 PLC	2 PLC	ANGLE	UNIT	mm	DESIGNED
MATERIAL		SEE NOTE		SCALE	4:1	DRAWN	
FINISH		SEE NOTE		DATE	09-JAN-2013	REV.	OB
THE 3RD PROJECTION				DWG. NO.	BLP-3DN7182	1/1	

PROPRIETARY NOTE: THIS SHEET OF ENGINEERING DRAWINGS AND SPECIFICATIONS OF TENGSCREW CO., LTD. THIS DOCUMENT MAY NOT BE TRANSFERRED OR COPIED WITHOUT THE EXPRESS WRITTEN AUTHORIZATION OF TENGSCREW. IN ADDITIONAL, NEITHER THIS SHEET NOR THE INFORMATION IT CONTAINS MAY BE USED BY OR DISCLOSED TO ANY THIRD PARTY WITHOUT TENGSCREW'S EXPRESS WRITTEN CONSENT.



UN-FASTENED BEFORE USING IT PUSHING THE BUTTON BY FINGER



RETURN UN-FASTENED AUTOMATICALLY AFTER FASTENED BY FINGER

DWG. & P/N=BLP-3DN7182

CLIENT'S REVISIONS			
LTR	DESCRIPTION	DATE	APP.

NOTE :

KEY-STYLE-QUICK-RELEASE-PINS (SINGLE ACTION-PINS - 2 BALLS)
 < WITHOUT ATTACHED RECEPTACLE >

Specification : Dia. 4.76 x L. 38.80 MM
 Button, Shank, Collar for Materials : SAE1215MS Steel + Finish : Nickel Plated.
 Balls, Spring for Materials : SUS 304 + Finish : Passivated + Resistance Rust.
 Ring for Materials : SAE 1008CHQ Steel + Finish : Nickel Plated In Surface.
 Mini. Tension Load Capabilities = 22.60 N.m (200 Lbf) = 90.91 Kgf.
 Calculated Double Shear Strength = Approx. 1,200 Lbf = About 545.00 Kgf.
 Installation Hole = 4.88 +/- 0.05 MM.
 Being Accompanied By European RoHS Latest Standard in 2,013 Year !

Tengscrew Co., Ltd.				CLIENT'S NAME	
PART NO. BLP-3DN7182				Approval No. Part No.	
NAME KEY-STYLE-QUICK-RELEASE-PINS (2 BALLS)				APPROVED Johnson	
TOL. ± 1 PLC 2 PLC ANGLE				DESIGNED Johnson	
MATERIAL SEE NOTE				SCALE 4:1 DRAWN Tommy	
FINISH SEE NOTE				DATE 09-JAN-2013 REV. 0B	
THE 3RD PROJECTION				DWG. NO. BLP-3DN7182 1/1	

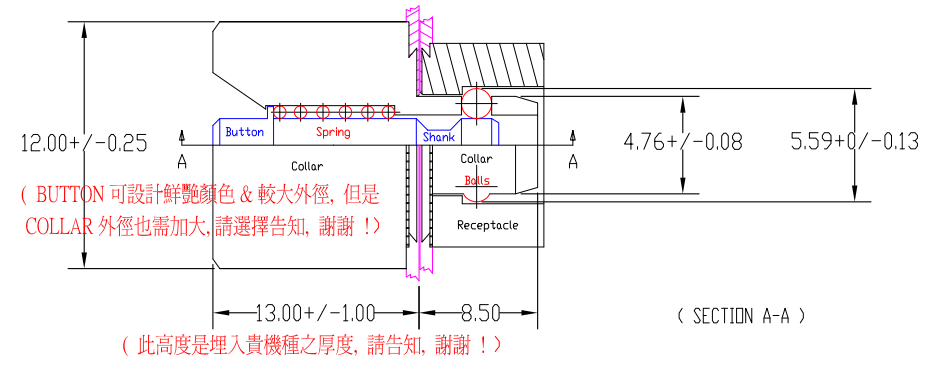
PROPRIETARY NOTE: THIS SHEET OF ENGINEERING DRAWINGS AND SPECIFICATIONS OF TENGSCREW CO., LTD. THIS DOCUMENT MAY NOT BE TRANSFERRED OR COPIED WITHOUT THE EXPRESS WRITTEN AUTHORIZATION OF TENGSCREW. NEITHER THIS SHEET NOR THE INFORMATION IT CONTAINS MAY BE USED BY OR DISCLOSED TO ANY THIRD PARTY WITHOUT TENGSCREW'S EXPRESS WRITTEN CONSENT.

UNIT	MM
------	----

安全, 隱藏, 快速, 容易操作之抽取按鍵式定位插銷之公母套組

公件插銷COLLAR與RECEPTACLE之推拉力 = 200 LBS = 90.91 KGF
 母件底座RECEPTACLE與鐵板之推拉力 = 132 LBS = 60 KGF
 外觀鍍鎳之鹽霧測試 24 小時, 符合最新歐盟環保 2013 年標準

(此圖形是貴機種之前蓋與基座接合時之固定情況)



(BUTTON 可設計鮮艷顏色 & 較大外徑, 但是 COLLAR 外徑也需加大, 請選擇告知, 謝謝 !)

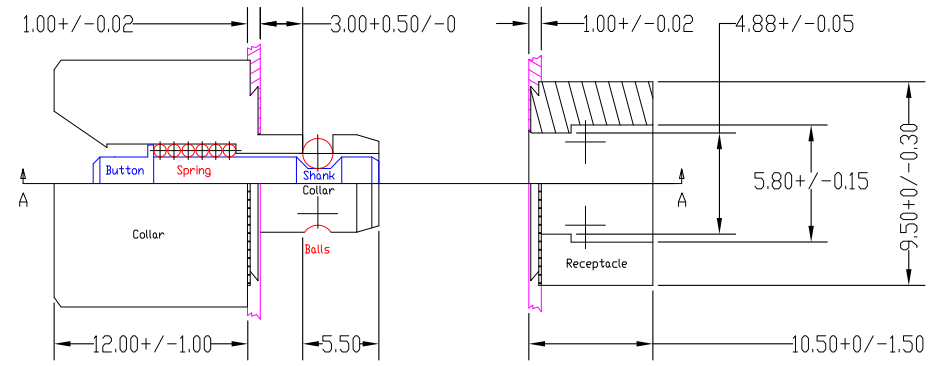
(此高度是埋入貴機種之厚度, 請告知, 謝謝 !)

UN-FASTENED BEFORE USING IT PUSHING THE BUTTON BY FINGER

(此公扣件是 必須铆接固定於前蓋, 以防前蓋 打開後掉落遺失, 設定鐵板厚度 = 1 MM)

(此母扣件是 最好是我方提供尺寸含熱處理底座而 貴司铆接安裝固定於基座, 設定鐵板厚度=1 MM)

Panel A Thickness (GRIP LENGTH=3.00 MM) Panel B Thickness



RETURN UN-FASTENED AUTOMATICALLY AFTER FASTENED BY FINGER

(此圖形是貴機種之前蓋與基座分離時之分開情況)

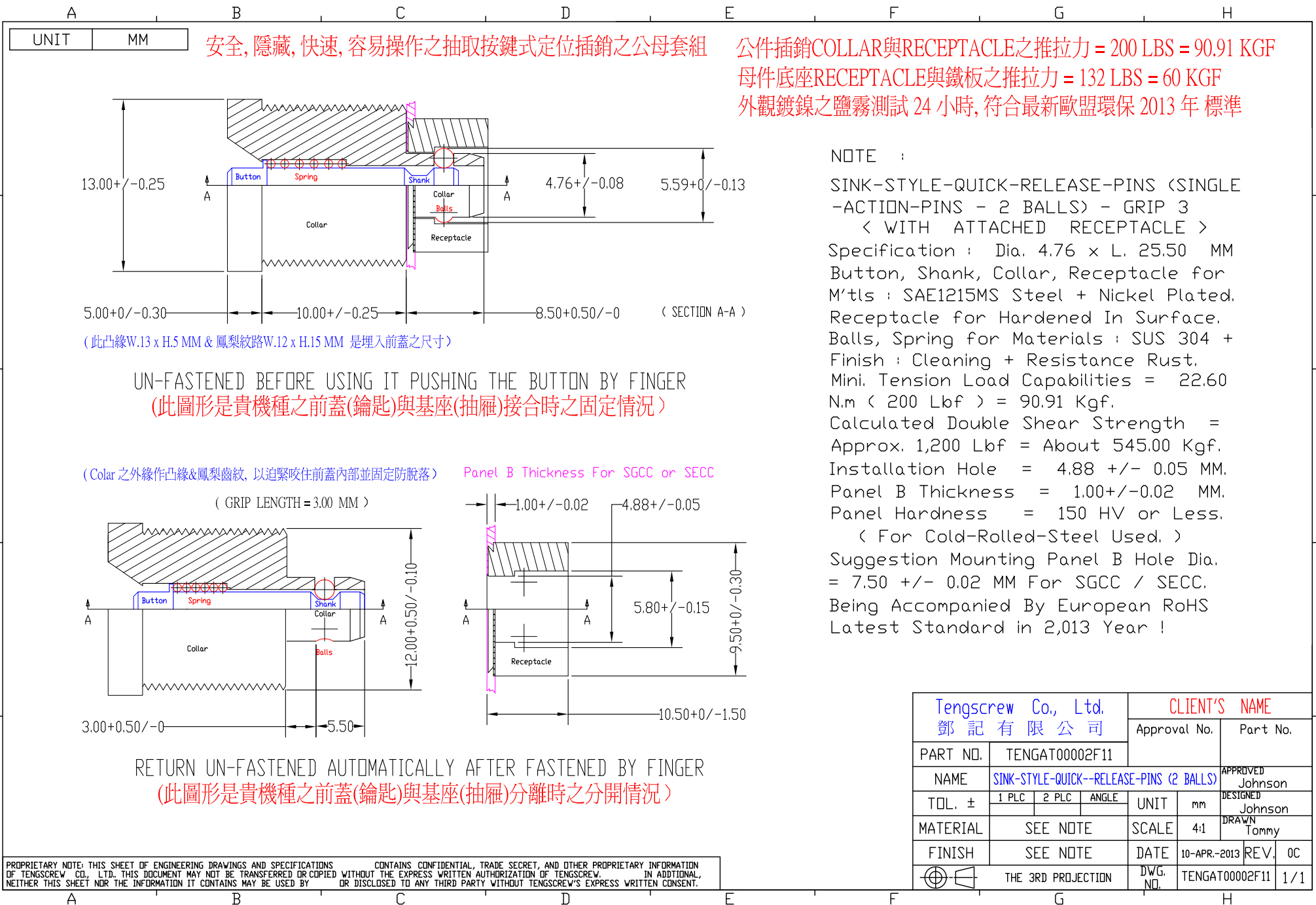
NOTE :

SINK-STYLE-QUICK-RELEASE-PINS (SINGLE ACTION-PINS - 2 BALLS) - GRIP 3 < WITH ATTACHED RECEPTACLE >

Specification : Dia. 4.76 x L. 21.50 MM
 Button, Shank, Collar, Receptacle for M'tls : SAE1215MS Steel + Nickel Plated.
 Receptacle for Hardened In Surface.
 Balls, Spring for Materials : SUS 304 + Finish : Cleaning + Resistance Rust.
 Mini. Tension Load Capabilities = 22.60 N.m (200 Lbf) = 90.91 Kgf.
 Calculated Double Shear Strength = Approx. 1,200 Lbf = About 545.00 Kgf.
 Installation Hole = 4.88 +/- 0.05 MM.
 Panel A/B Thickness = 1.00 +/- 0.02 MM.
 Panel Hardness = 150 HV or Less.
 (For Cold-Rolled-Steel Used.)
 Suggestion Mounting Panel A/B Hole Dia. = 7.50 +/- 0.02 MM For SGCC / SECC.
 Being Accompanied By European RoHS Latest Standard in 2,013 Year !

PROPRIETARY NOTE: THIS SHEET OF ENGINEERING DRAWINGS AND SPECIFICATIONS OF TENGSCREW CO., LTD. THIS DOCUMENT MAY NOT BE TRANSFERRED OR COPIED WITHOUT THE EXPRESS WRITTEN AUTHORIZATION OF TENGSCREW. IN ADDITIONAL, NEITHER THIS SHEET NOR THE INFORMATION IT CONTAINS MAY BE USED BY OR DISCLOSED TO ANY THIRD PARTY WITHOUT TENGSCREW'S EXPRESS WRITTEN CONSENT.

Tengscrew Co., Ltd. 鄧記有限公司		Client's Full Name	
PART NO.	TENGAT00002F11	Approval No.	Part No.
NAME	SINK-STYLE-QUICK-RELEASE-PINS (2 BALLS)	APPROVED	Johnson
TOL. ±	1 PLC 2 PLC ANGLE	DESIGNED	Johnson
MATERIAL	SEE NOTE	DRAWN	Tommy
FINISH	SEE NOTE	DATE	16-APR-2013
		REV.	0A
	THE 3RD PROJECTION	DWG. NO.	TENGAT00002F11
			1/1



PROPRIETARY NOTE: THIS SHEET OF ENGINEERING DRAWINGS AND SPECIFICATIONS OF TENGSCREW CO., LTD. THIS DOCUMENT MAY NOT BE TRANSFERRED OR COPIED WITHOUT THE EXPRESS WRITTEN AUTHORIZATION OF TENGSCREW. IN ADDITIONAL, NEITHER THIS SHEET NOR THE INFORMATION IT CONTAINS MAY BE USED BY OR DISCLOSED TO ANY THIRD PARTY WITHOUT TENGSCREW'S EXPRESS WRITTEN CONSENT.