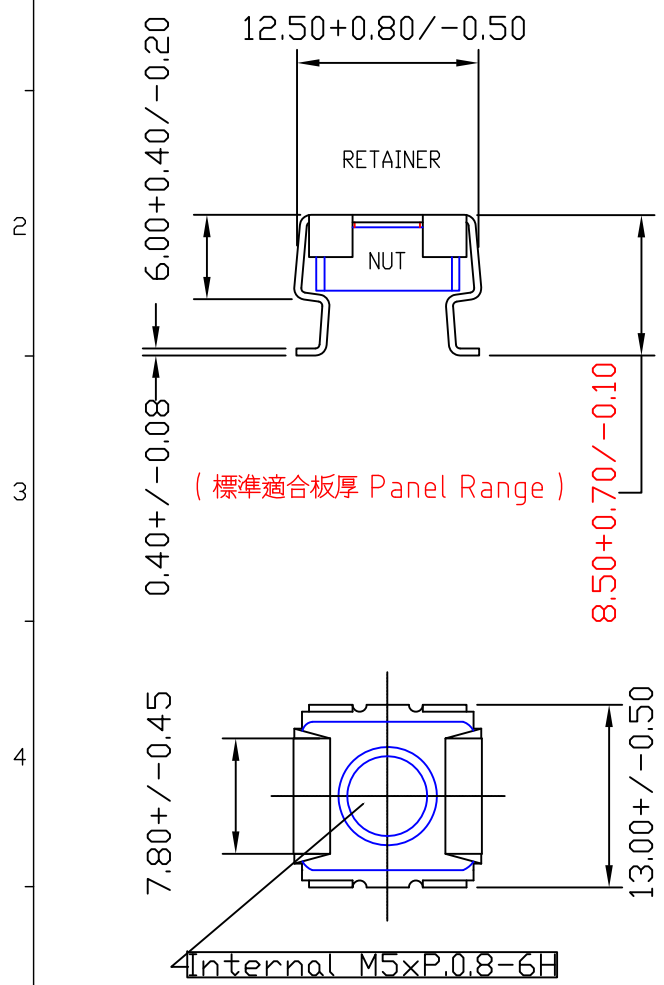
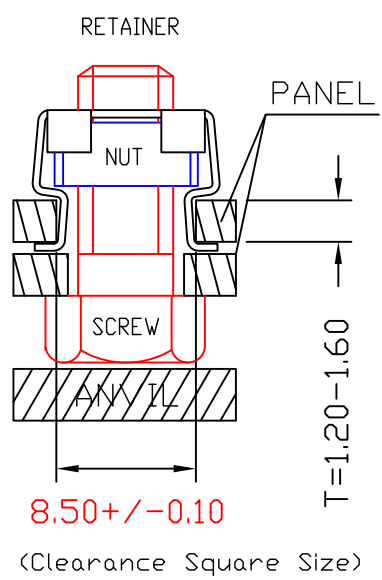


UNIT		MM		PART NO. = M5 83511			REVISIONS	
LTR	DESCRIPTION	DATE	APP.					



PANEL PREPARATION AND INSTALLATION

First put into one foot, in panel, then making use of smooth face punch to press another foot smooth insert into panel.



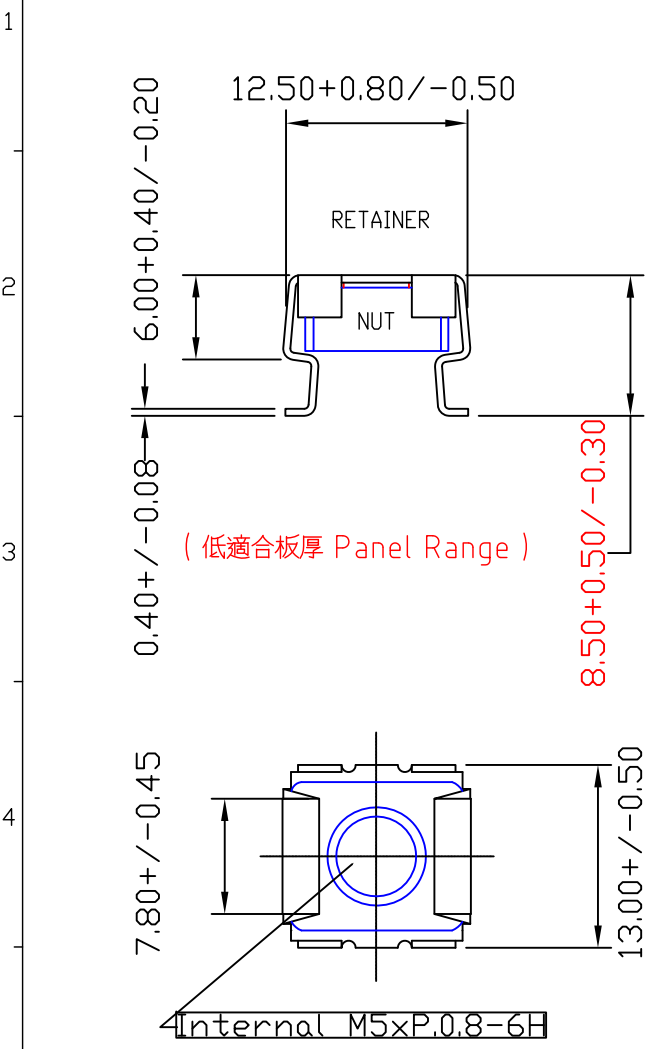
SOLID BACK-UP TOOL

NOTE :

- a) Spec. : M5 x 10.80 x 13.00 x 8.50 MM Cage-Nut-M51, Captive-Fasteners.
- b) Retainer: SAE 1050 Carbon Steel (Spring Steel By HRC 45 (Ave.)) + Hardened + Zinc Plated CR3+.
- c) Nut : SAE 1008CHQ Carbon Steel + Zinc Plated CR3+ In Surface.
- e) Installation Force = 50 kgf (Ave.)
- f) Clamping Force = 15 kgf (Ave.)
- g) Sheet Hardness = HRB 70 (Max.), (Panel For Cold-Rolled-Steel Used)
- h) Panel Clearance Square Size :
 L. 8.50+/-0.10 x W. 8.50+/-0.10 x H. 1.20-1.60+/-0.08 MM. (L. x W. x H.)
 (標準安裝開孔 L. x W. x 適合板厚 H. MM)
- i) Being Accompanied By European RoHS Latest Standard.

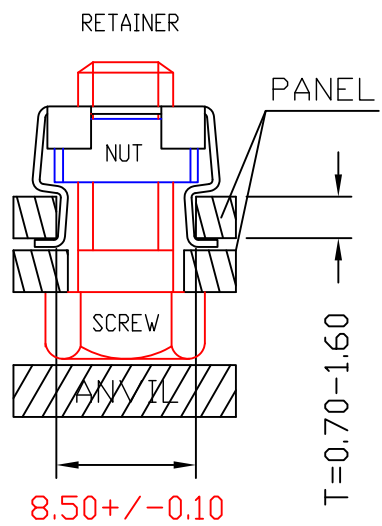
Tengscrew Co., Ltd.					CLIENT CONFIRMED	
					SIGNED	
					DATE	
NAME	Cage-Nut-M51, Captive-Fasteners				APPROVED Johnson	
TOL. ±	1 PLC	2 PLC	ANGLE	UNIT	mm	DESIGNED Tommy
MATERIAL	SEE NOTE			SCALE	4:1	DRAWN Tommy
FINISH	SEE NOTE			DATE	25-Sep.-12	REV. 0B
	THE 3RD PROJECTION			DWG. NO.	M5 83511	1/1

PROPRIETARY NOTE: THIS SHEET OF ENGINEERING DRAWINGS AND SPECIFICATIONS OF TENGSCREW CO., LTD. THIS DOCUMENT MAY NOT BE TRANSFERRED OR COPIED WITHOUT THE EXPRESS WRITTEN AUTHORIZATION OF TENGSCREW. IN ADDITIONAL, NEITHER THIS SHEET NOR THE INFORMATION IT CONTAINS MAY BE USED BY OR DISCLOSED TO ANY THIRD PARTY WITHOUT TENGSCREW'S EXPRESS WRITTEN CONSENT.



PANEL PREPARATION AND INSTALLATION

First put into one foot, in panel, then making use of smooth face punch to press another foot smooth insert into panel.



(Clearance Square Size)

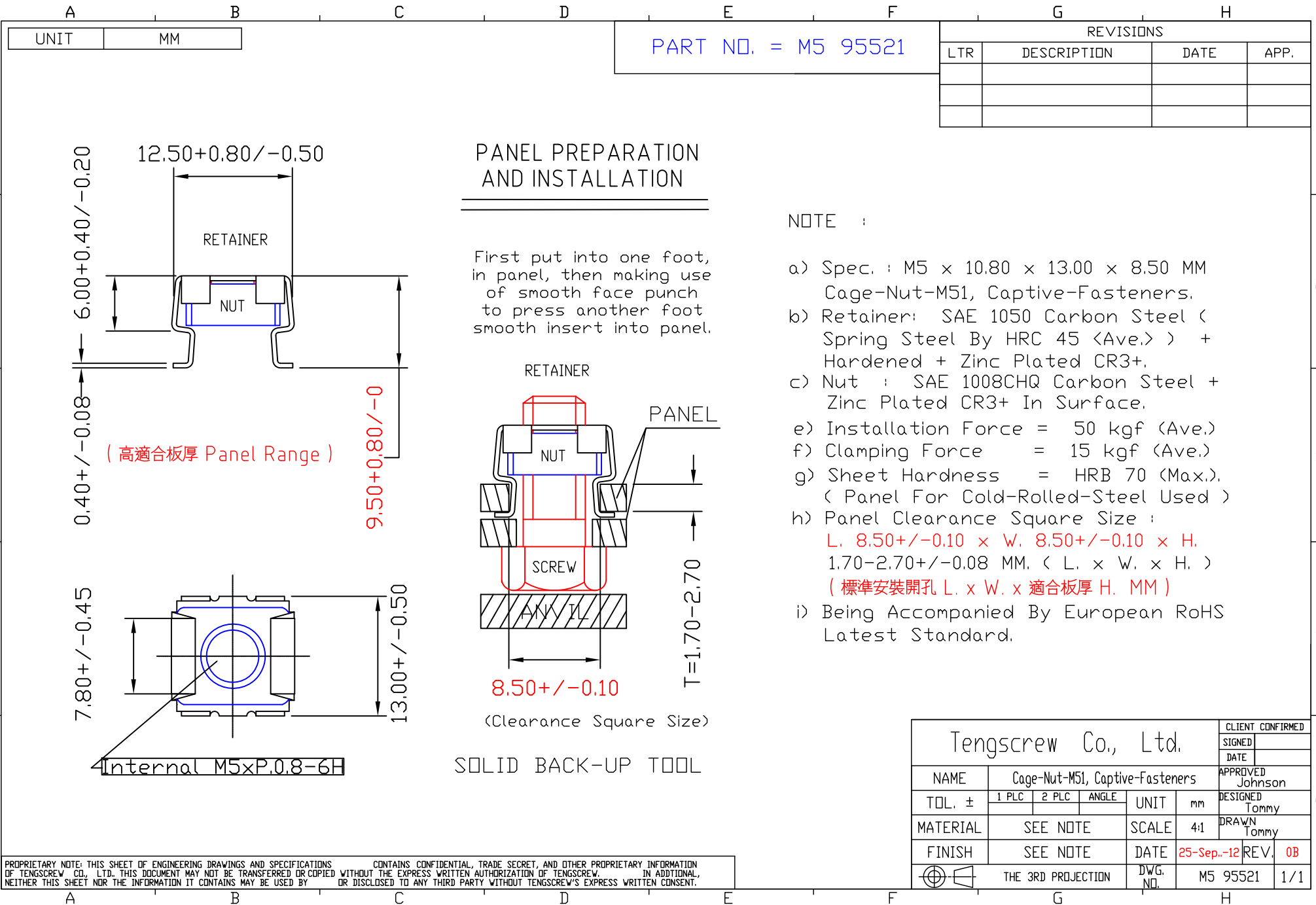
SOLID BACK-UP TOOL

NOTE :

- a) Spec. : M5 x 10.80 x 13.00 x 8.50 MM Cage-Nut-M51, Captive-Fasteners.
- b) Retainer: SAE 1050 Carbon Steel (Spring Steel By HRC 45 (Ave.)) + Hardened + Zinc Plated CR3+.
- c) Nut : SAE 1008CHQ Carbon Steel + Zinc Plated CR3+ In Surface.
- e) Installation Force = 50 kgf (Ave.)
- f) Clamping Force = 15 kgf (Ave.)
- g) Sheet Hardness = HRB 70 (Max.), (Panel For Cold-Rolled-Steel Used)
- h) Panel Clearance Square Size :
L. 8.50+/-0.10 x W. 8.50+/-0.10 x H. 0.70-1.60+/-0.08 MM. (L. x W. x H.)
(標準安裝開孔 L. x W. x 適合板厚 H. MM)
- i) Being Accompanied By European RoHS Latest Standard.

Tengscrew Co., Ltd.					CLIENT CONFIRMED	
					SIGNED	
					DATE	
NAME			Cage-Nut-M51, Captive-Fasteners		APPROVED Johnson	
TOL. ±		1 PLC	2 PLC	ANGLE	UNIT	mm
MATERIAL		SEE NOTE			SCALE	4:1
FINISH		SEE NOTE			DATE	25-Sep.-12
REV.		0B			DRAWN Tommy	
DWG. NO.		M5 95511			1/1	
THE 3RD PROJECTION		DWG. NO.		M5 95511		

PROPRIETARY NOTE: THIS SHEET OF ENGINEERING DRAWINGS AND SPECIFICATIONS CONTAINS CONFIDENTIAL, TRADE SECRET, AND OTHER PROPRIETARY INFORMATION OF TENGSCREW CO., LTD. THIS DOCUMENT MAY NOT BE TRANSFERRED OR COPIED WITHOUT THE EXPRESS WRITTEN AUTHORIZATION OF TENGSCREW. IN ADDITIONAL, NEITHER THIS SHEET NOR THE INFORMATION IT CONTAINS MAY BE USED BY OR DISCLOSED TO ANY THIRD PARTY WITHOUT TENGSCREW'S EXPRESS WRITTEN CONSENT.



PART NO. = M5 95521

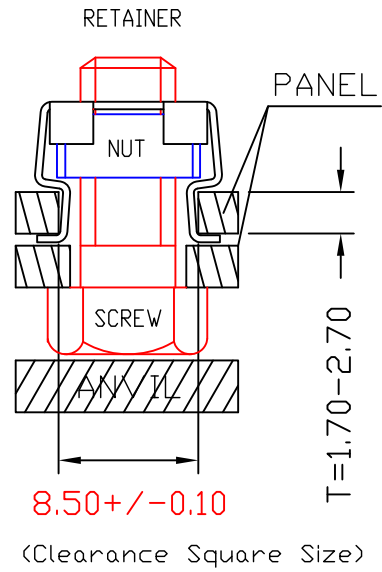
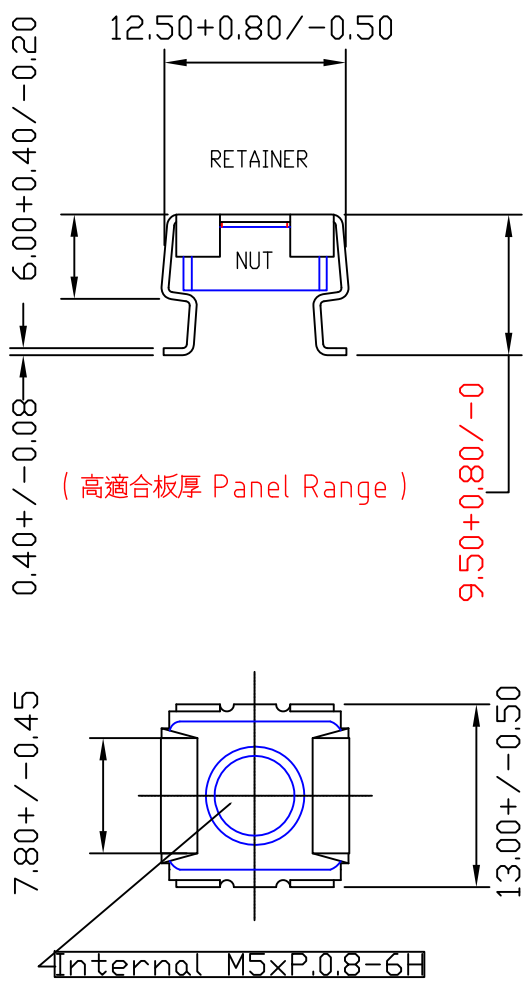
REVISIONS			
LTR	DESCRIPTION	DATE	APP.

PANEL PREPARATION AND INSTALLATION

First put into one foot, in panel, then making use of smooth face punch to press another foot smooth insert into panel.

NOTE :

- a) Spec. : M5 x 10.80 x 13.00 x 8.50 MM Cage-Nut-M51, Captive-Fasteners.
- b) Retainer: SAE 1050 Carbon Steel (Spring Steel By HRC 45 (Ave.)) + Hardened + Zinc Plated CR3+.
- c) Nut : SAE 1008CHQ Carbon Steel + Zinc Plated CR3+ In Surface.
- e) Installation Force = 50 kgf (Ave.)
- f) Clamping Force = 15 kgf (Ave.)
- g) Sheet Hardness = HRB 70 (Max.), (Panel For Cold-Rolled-Steel Used)
- h) Panel Clearance Square Size :
 L. 8.50+/-0.10 x W. 8.50+/-0.10 x H. 1.70-2.70+/-0.08 MM. (L. x W. x H.)
 (標準安裝開孔 L. x W. x 適合板厚 H. MM)
- i) Being Accompanied By European RoHS Latest Standard.



SOLID BACK-UP TOOL

Tengscrew Co., Ltd.					CLIENT CONFIRMED		
					SIGNED		
Cage-Nut-M51, Captive-Fasteners					DATE		
					APPROVED	Johnson	
NAME					DESIGNED	Tommy	
TOL. ±	1 PLC	2 PLC	ANGLE	UNIT	mm	DRAWN	Tommy
MATERIAL	SEE NOTE			SCALE	4:1		
FINISH	SEE NOTE			DATE	25-Sep.-12	REV.	0B
THE 3RD PROJECTION				DWG. NO.	M5 95521	1/1	

PROPRIETARY NOTE: THIS SHEET OF ENGINEERING DRAWINGS AND SPECIFICATIONS OF TENGSCREW CO., LTD. THIS DOCUMENT MAY NOT BE TRANSFERRED OR COPIED WITHOUT THE EXPRESS WRITTEN AUTHORIZATION OF TENGSCREW. IN ADDITIONAL, NEITHER THIS SHEET NOR THE INFORMATION IT CONTAINS MAY BE USED BY OR DISCLOSED TO ANY THIRD PARTY WITHOUT TENGSCREW'S EXPRESS WRITTEN CONSENT.