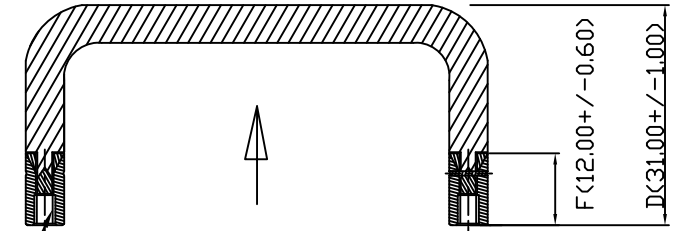


旋轉把手自動單向往下 90 度固定



(UN-FASTENED - FRONT)



旋轉把手手握單向往上 90 度拉起

G(M3xP.0.5-SCREW 實配x2)

(FASTENED - FRONT)

PANEL PREPARATION & SCREW INSTALLATION

NOTE FOR REFERENCE VALUED WHEN INSERT INTO THE SERVER OR P. COMPUTER :

(A) HANDLE 把手主體 (NICKEL-PLATED 鍍鎳)

PART NUMBER (P/N.) : TENG000035A
 SPECIFICATION (SPEC.) : 6.35x90x25 - A
 MATERIAL : SAE 1215MS CUTTING STEEL

(C) PIN 實體軸心 (NICKEL-PLATED 鍍鎳)

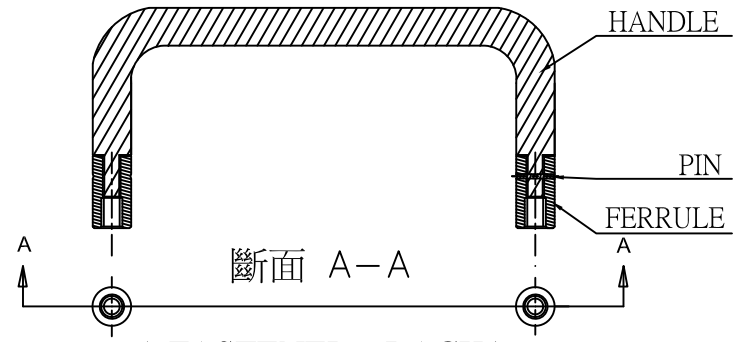
PART NUMBER (P/N.) : TENG000035C
 SPECIFICATION (SPEC.) : 2.4 x 6.8 - C
 MATERIAL : SAE 1018 CARBON STEEL

(B) FERRULE 螺絲帽 (NICKEL-PLATED 鍍鎳)

PART NUMBER (P/N.) : TENG000035B
 SPECIFICATION (SPEC.) : 7.0x12.0-M3-B
 MATERIAL : SAE 1215MS CUTTING STEEL
 BEING SUITABLE TO LATEST EUROPEAN
 RoHS STANDARD IN 2,014 YEAR !)

(D) REMARKS (REFERENCE VALUED) :

- a) SCREW'S LOCK FORCE: SUGGESTION FOR PROVIDING PROPER TORQUE (KGF-CM) MAX. R.P.M. W/ INSTRUMENT WEIGHTS.
- b) HANDLE'S HARDNESS : 95HRB-80HRB
- c) SALT-SPRAY-TESTING : 12 HOURS.

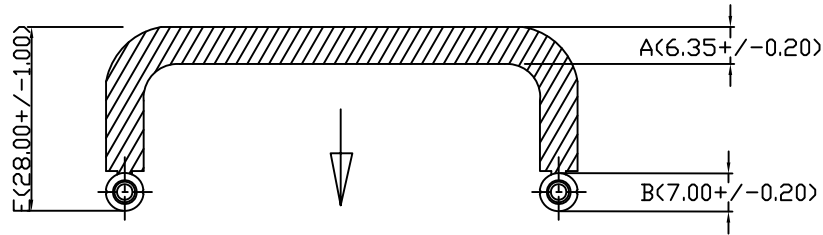


(FASTENED - BACK)

PROPRIETARY NOTE: THIS SHEET OF ENGINEERING DRAWINGS AND SPECIFICATIONS OF TENGSCREW CO., LTD. THIS DOCUMENT MAY NOT BE TRANSFERRED OR COPIED WITHOUT THE EXPRESS WRITTEN AUTHORIZATION OF TENGSCREW. IN ADDITIONAL, NEITHER THIS SHEET NOR THE INFORMATION IT CONTAINS MAY BE USED BY OR DISCLOSED TO ANY THIRD PARTY WITHOUT TENGSCREW'S EXPRESS WRITTEN CONSENT.

鄧記有限公司 (Tengscrew Co., Ltd.)						MODEL	
NAME	REVOLVING-HANDLES 手動旋轉把手				APPROVED		JOHNSON
TOL. ±	1 PLC	2 PLC	ANGLE	UNIT	MM	DESIGNED	
MATERIAL	1215MS STEEL 快削鋼			SCALE	4:1	TOMMY	
FINISH	NICKEL-PLATED 鍍鎳			DATE	APR-09-2014	REV.	1A
THE 3RD PROJECTION	DWG. AND PART NO.		TENG000035		1/1		

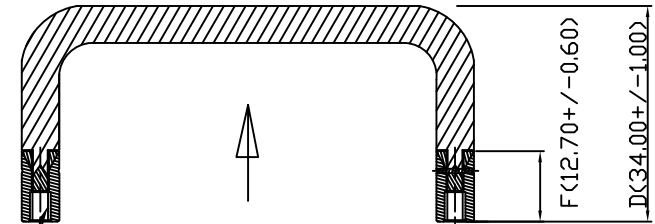
A	B	C	D	E	F	G	H		
UNIT	MM	DWG. & P/N = TENGC000018				REVISIONS			
						LTR	DESCRIPTION	DATE	APP.



旋轉把手自動單向往下 90 度固定



(UN-FASTENED - FRONT)



旋轉把手手握單向往上 90 度拉起

G(M4xP.0.7-SCREW 實配x2)

(FASTENED - FRONT)

PANEL PREPARATION & SCREW INSTALLATION

NOTE FOR REFERENCE VALUED WHEN INSERT INTO THE SERVER OR P. COMPUTER :

(A) HANDLE 把手主體 (NICKEL-PLATED 鍍鎳)

PART NUMBER (P/N.) : TENGC000018A
 SPECIFICATION (SPEC.) : 6.35x115x28 - A
 MATERIAL : SAE 1215MS CUTTING STEEL

(C) PIN 實體軸心 (NICKEL-PLATED 鍍鎳)

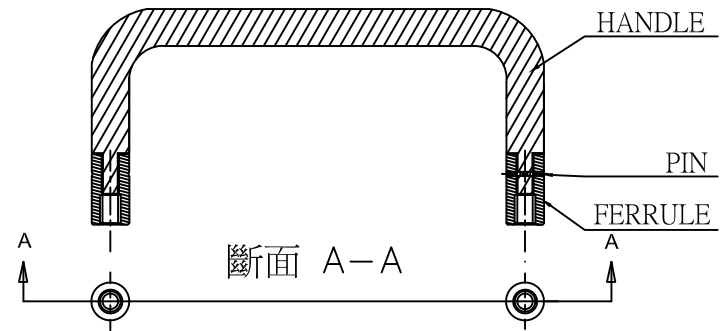
PART NUMBER (P/N.) : TENGC000018C
 SPECIFICATION (SPEC.) : 2.4 x 6.8 - C
 MATERIAL : SAE 1018 CARBON STEEL

(B) FERRULE 螺絲帽 (NICKEL-PLATED 鍍鎳)

PART NUMBER (P/N.) : TENGC000018B
 SPECIFICATION (SPEC.) : 7.0x12.7-M4-B
 MATERIAL : SAE 1215MS CUTTING STEEL
 BEING SUITABLE TO LATEST EUROPEAN
 RoHS STANDARD IN 2,013 YEAR !)

(D) REMARKS (REFERENCE VALUED) :

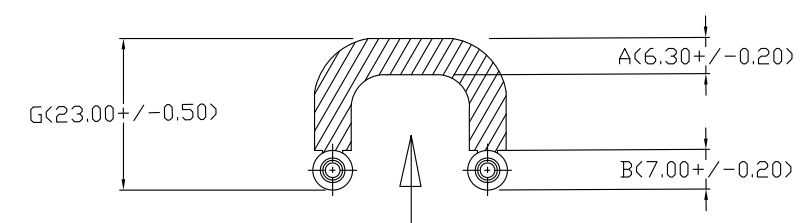
- a) SCREW'S LOCK FORCE: SUGGESTION FOR PROVIDING PROPER TORQUE (KGF-CM) MAX. R.P.M. W/ INSTRUMENT WEIGHTS.
- b) HANDLE'S HARDNESS : 95HRB-80HRB
- c) SALT-SPRAY-TESTING : 6 HOURS



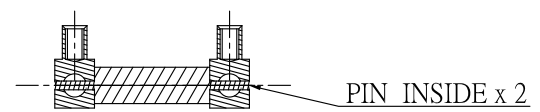
(FASTENED - BACK)

鄧記有限公司 (Tengscrew Co., Ltd.)						MODEL
NAME	REVOLVING-HANDLES 手動旋轉把手				APPROVED	JOHNSON
TOL. ±	1 PLC	2 PLC	ANGLE	UNIT	MM	DESIGNED
MATERIAL	1215MS STEEL 快削鋼		SCALE	4:1	DRAWN	
FINISH	NICKEL-PLATED 鍍鎳		DATE	JULY-03-2013	REV.	0A
THE 3RD PROJECTION	DWG. AND PART NO.		TENGCO000018		1/1	

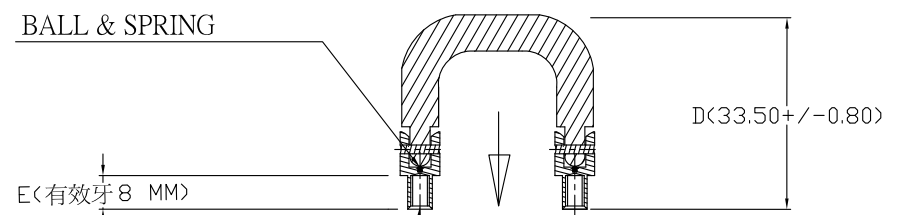
PROPRIETARY NOTE: THIS SHEET OF ENGINEERING DRAWINGS AND SPECIFICATIONS OF TENGSCREW CO., LTD. THIS DOCUMENT MAY NOT BE TRANSFERRED OR COPIED WITHOUT THE EXPRESS WRITTEN AUTHORIZATION OF TENGSCREW. IN ADDITIONAL, NEITHER THIS SHEET NOR THE INFORMATION IT CONTAINS MAY BE USED BY OR DISCLOSED TO ANY THIRD PARTY WITHOUT TENGSCREW'S EXPRESS WRITTEN CONSENT.



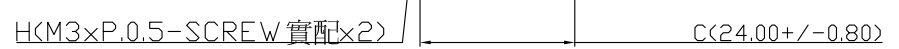
旋轉把手手握單向往上 90 度固定



(UN-FASTENED - FRONT)



旋轉把手手握單向往下 90 度拉起



(FASTENED - FRONT)

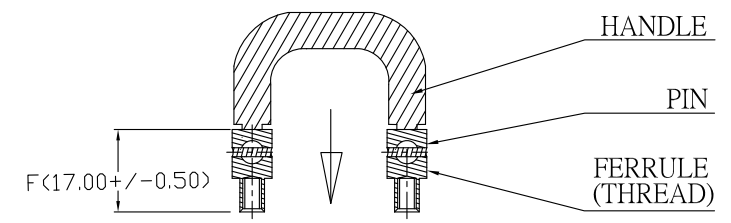
PANEL PREPARATION AND NUT INSTALLATION

NOTE FOR REFERENCE VALUED WHEN INSERT INTO THE SERVER OR P. COMPUTER :

- (A) HANDLE把手主體 (ANODIZING 原色陽極)
PART NUMBER (P/N.) : TENG000010A
SPECIFICATION (SPEC.) : 6.35×102×37.5-A
MATERIAL : AISI 6063 ALUMINUM ALLOY
- (B) FERRULE螺絲柱 (NICKEL-PLATED 鍍鎳)
PART NUMBER (P/N.) : TENG000010B
SPECIFICATION (SPEC.) : 7.0×17.00-M3-B
MATERIAL : SAE 1215MS CUTTING STEEL
- (C) PIN實體軸心 (NICKEL-PLATED 鍍鎳)
PART NUMBER (P/N.) : TENG000010C
SPECIFICATION (SPEC.) : 2.4 × 7.00 - C
MATERIAL : SAE1008CHQ CARBON STEEL
BEING SUITABLE TO LATEST EUROPEAN ROHS STANDARD IN 2,013 YEAR !

- (D) BALL實體圓球 (PASSIVATED 防銹)
PART NUMBER (P/N.) : TENG000010C
SPECIFICATION (SPEC.) : 2.4 (ROUND)-D
MATERIAL : AISI 304 STAINLESS STEEL
- (E) SPRING彈簧 (PASSIVATED 防銹)
PART NUMBER (P/N.) : TENG000010C
SPECIFICATION (SPEC.) : ACC. TO DESIGN-E
MATERIAL : AISI 304 STAINLESS STEEL

- (D) REMARKS (REFERENCE VALUED) :
- a) SCREW'S LOCK FORCE: SUGGESTION FOR PROVIDING PROPER TORQUE (KGF-CM) MAX. R.P.M. W/ INSTRUMENT WEIGHTS.
 - b) HANDLE'S HARDNESS : 83 HV (REF.)
 - c) SALT-SPRAY-TESTING : 6 HOURS

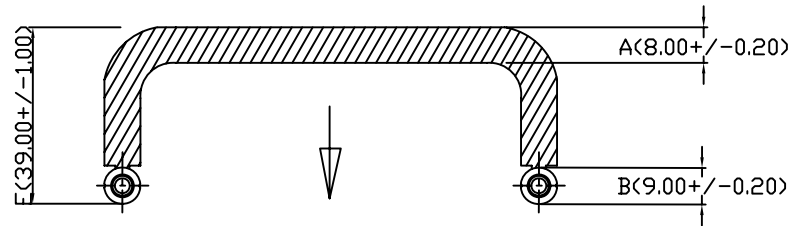


斷面 A-A

(FASTENED - BACK)

鄧記有限公司 (Tengscrew Co., Ltd.)					CLIENT / DEPT.	
NAME	REVOLVING-HANDLES 手動固定旋轉把手			UNIT	MM	APPROVED JOHNSON
TOL. ±	1 PLC	2 PLC	ANGLE			DESIGNED TOMMY
MATERIAL	鋁合金, 快削鋼, 碳鋼, 不銹鋼			SCALE	4:1	DRAWN TOMMY
FINISH	原色陽極, 鍍鎳, 鍍鎳, 防銹處理			DATE	APR.-26-2013	REV. 0A
THE 3RD PROJECTION				DWG. AND PART NO.	TENG000010	1/1

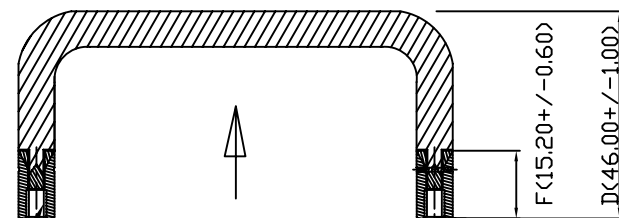
PROPRIETARY NOTE: THIS SHEET OF ENGINEERING DRAWINGS AND SPECIFICATIONS OF TENGSCREW CO., LTD. THIS DOCUMENT MAY NOT BE TRANSFERRED OR COPIED WITHOUT THE EXPRESS WRITTEN AUTHORIZATION OF TENGSCREW. IN ADDITIONAL, NEITHER THIS SHEET NOR THE INFORMATION IT CONTAINS MAY BE USED BY OR DISCLOSED TO ANY THIRD PARTY WITHOUT TENGSCREW'S EXPRESS WRITTEN CONSENT.



旋轉把手自動單向往下 95 度固定



(UN-FASTENED - FRONT)



旋轉把手手握單向往上 95 度拉起

G(M4×P.0.7-SCREW 實配×2)

(FASTENED - FRONT)

PANEL PREPARATION & SCREW INSTALLATION

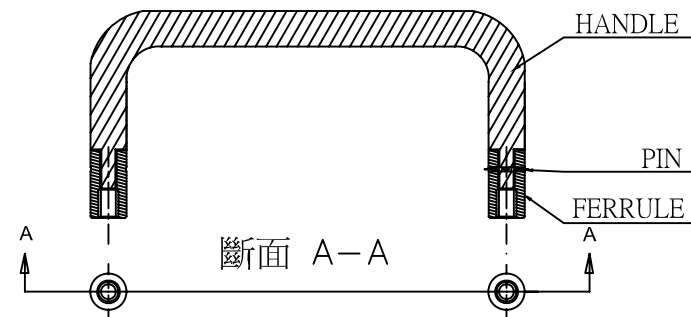
NOTE FOR REFERENCE VALUED WHEN INSERT INTO THE SERVER OR P. COMPUTER :

(A) HANDLE 把手主體 (NICKEL-PLATED 鍍鎳)
 PART NUMBER (P/N.) : TENGC000005A
 SPECIFICATION (SPEC.) : 8.0×90×39 - A
 MATERIAL : SAE 1215MS CUTTING STEEL

(C) PIN 實體軸心 (NICKEL-PLATED 鍍鎳)
 PART NUMBER (P/N.) : TENGC000005C
 SPECIFICATION (SPEC.) : 2.4 × 8.8 - C
 MATERIAL : SAE 1018 CARBON STEEL

(B) FERRULE 螺絲帽 (NICKEL-PLATED 鍍鎳)
 PART NUMBER (P/N.) : TENGC000005B
 SPECIFICATION (SPEC.) : 9.0×15.2-M4-B
 MATERIAL : SAE 1215MS CUTTING STEEL
 BEING SUITABLE TO LATEST EUROPEAN
 RoHS STANDARD IN 2,012 YEAR !)

(D) REMARKS (REFERENCE VALUED) :
 a) SCREW'S LOCK FORCE: SUGGESTION FOR
 PROVIDING PROPER TORQUE (KGF-CM)
 MAX. R.P.M. W/ INSTRUMENT WEIGHTS.
 b) HANDLE'S HARDNESS : 95HRB-80HRB
 c) SALT-SPRAY-TESTING : 6 HOURS



(FASTENED - BACK)

鄧記有限公司 (Tengscrew Co., Ltd.)					MODEL	
NAME	REVOLVING-HANDLES 手動旋轉把手				APPROVED JOHNSON	
TOL. ±	1 PLC	2 PLC	ANGLE	UNIT	MM	DESIGNED TOMMY
MATERIAL	1215MS STEEL 快削鋼			SCALE	4:1	DRAWN TOMMY
FINISH	NICKEL-PLATED 鍍鎳		DATE	APR.-26-2012	REV.	0B
THE 3RD PROJECTION			DWG. AND PART NO.	TENGC000005 1/1		

PROPRIETARY NOTE: THIS SHEET OF ENGINEERING DRAWINGS AND SPECIFICATIONS OF TENGSCREW CO., LTD. THIS DOCUMENT MAY NOT BE TRANSFERRED OR COPIED WITHOUT THE EXPRESS WRITTEN AUTHORIZATION OF TENGSCREW. IN ADDITIONAL, NEITHER THIS SHEET NOR THE INFORMATION IT CONTAINS MAY BE USED BY OR DISCLOSED TO ANY THIRD PARTY WITHOUT TENGSCREW'S EXPRESS WRITTEN CONSENT.