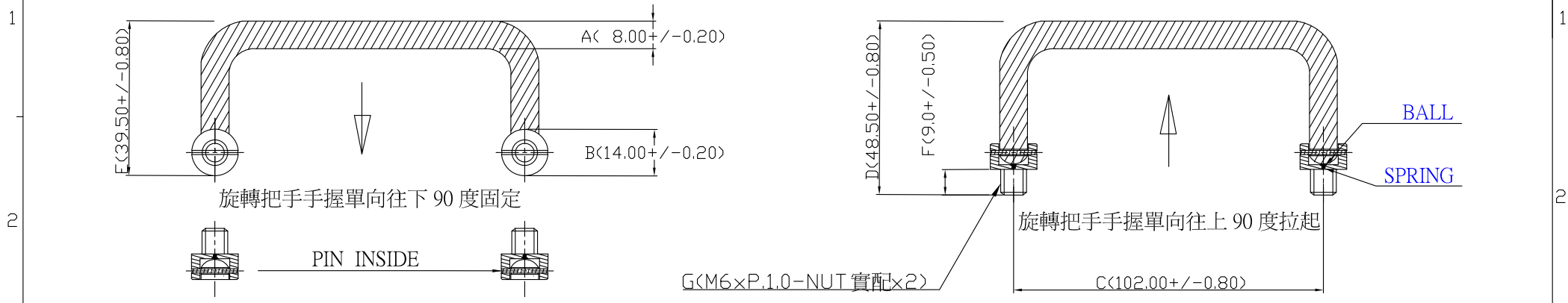


UNIT	MM	DWG. & P/N = TENG000045				REVISIONS			
		LTR	DESCRIPTION	DATE	APP.				

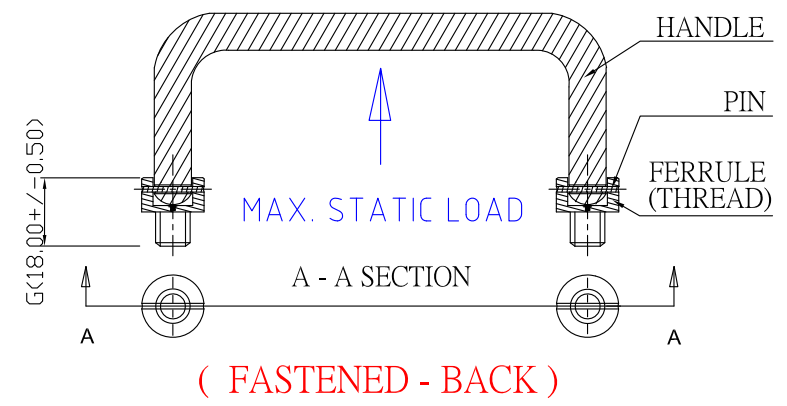


(UN-FASTENED - FRONT) ANTI-RATTLE FRICTION FEATURE (FASTENED - FRONT)

PANEL PREPARATION AND NUT INSTALLATION

NOTE FOR REFERENCE VALUED WHEN INSERT INTO THE SERVER OR P. COMPUTER :

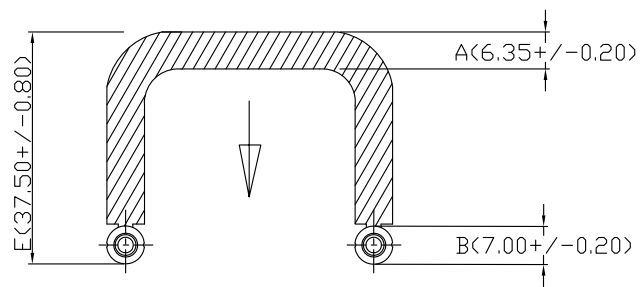
- | | |
|--|---|
| <p>(A) HANDLE把手主體 (NICKEL-PLATED 鍍鎳)
 PART NUMBER (P/N.) : TENG000045A
 SPECIFICATION (SPEC.) : 8.00x102x37.5-A
 MATERIAL : SAE 1215MS CUTTING STEEL</p> <p>(B) FERRULE螺絲柱 (NICKEL-PLATED 鍍鎳)
 PART NUMBER (P/N.) : TENG000045B
 SPECIFICATION (SPEC.) : 14.0x18.0-M6-B
 MATERIAL : SAE 1215MS CUTTING STEEL</p> <p>(C) PIN實體軸心 (NICKEL-PLATED 鍍鎳)
 PART NUMBER (P/N.) : TENG000045C
 SPECIFICATION (SPEC.) : 2.4 x 13.8 - C
 MATERIAL : SAE 1018 CARBON STEEL
 BEING SUITABLE TO LATEST EUROPEAN RoHS STANDARD IN 2,014 YEAR !</p> | <p>(D) BALL實體圓球 (PASSIVATED 防銹)
 PART NUMBER (P/N.) : TENG000045C
 SPECIFICATION (SPEC.) : 2.4 (ROUND)-D
 MATERIAL : AISI 304 STAINLESS STEEL</p> <p>(E) SPRING彈簧 (PASSIVATED 防銹)
 PART NUMBER (P/N.) : TENG000045C
 SPECIFICATION (SPEC.) : ACC. TO DESIGN-E
 MATERIAL : AISI 304 STAINLESS STEEL</p> <p>(D) REMARKS (REFERENCE VALUED) :
 a) NUT'S LOCK FORCE: SUGGESTION FOR MAX. TIGHTENING TORQUE = 11.5 N-M (= 10 IN-LBF) - NUTS NOT SUPPLIED.
 b) MAX. STATIC LOAD = 490 N (= 110 LBF).
 c) SALT-SPRAY-TESTING : 12 HOURS</p> |
|--|---|



(FASTENED - BACK)

鄧記有限公司 (Tengscrew Co., Ltd.)					CLIENT	
NAME	REVOLVING-HANDLES 手動固定旋轉把手			APPROVED JOHNSON		
TOL. ±	1 PLC	2 PLC	ANGLE	UNIT	MM	DESIGNED TOMMY
MATERIAL	1215MS STEEL 快削鋼			SCALE	4:1	DRAWN TOMMY
FINISH	NICKEL-PLATED 鍍鎳			DATE	JUNE-28-2014	REV. 0A
	THE 3RD PROJECTION			DWG. AND PART NO.	TENG000045	1/1

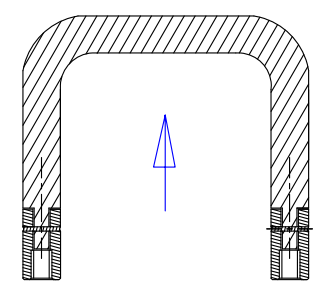
PROPRIETARY NOTE: THIS SHEET OF ENGINEERING DRAWINGS AND SPECIFICATIONS CONTAINS CONFIDENTIAL, TRADE SECRET, AND OTHER PROPRIETARY INFORMATION OF TENGSCREW CO., LTD. THIS DOCUMENT MAY NOT BE TRANSFERRED OR COPIED WITHOUT THE EXPRESS WRITTEN AUTHORIZATION OF TENGSCREW. IN ADDITIONAL, NEITHER THIS SHEET NOR THE INFORMATION IT CONTAINS MAY BE USED BY OR DISCLOSED TO ANY THIRD PARTY WITHOUT TENGSCREW'S EXPRESS WRITTEN CONSENT.



旋轉把手兩手指握自動單向往下 90 度固定



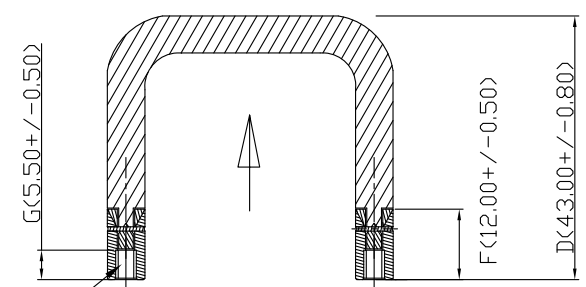
(UN-FASTENED - FRONT)



MAX. STATIC LOAD

G(M3×P.0.5-SCREW 實配×2)

ANTI-RATTLE FRICTION FEATURE



旋轉把手兩手指握單向往上 90 度拉起

(FASTENED - FRONT)

PANEL PREPARATION & SCREW INSTALLATION

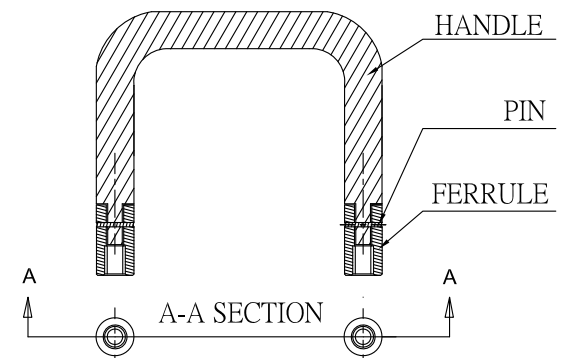
NOTE FOR REFERENCE VALUED WHEN INSERT INTO THE SERVER OR P. COMPUTER :

(A) HANDLE把手主體 (NICKEL-PLATED 鍍鎳)
 PART NUMBER (P/N.) : TENG000046A
 SPECIFICATION (SPEC.) : 6.35×38.1×37.5-A
 MATERIAL : SAE 1215MS CUTTING STEEL

(C) PIN實體軸心 (NICKEL-PLATED 鍍鎳)
 PART NUMBER (P/N.) : TENG000046C
 SPECIFICATION (SPEC.) : 2.4 × 6.8 - C
 MATERIAL : SAE 1018 CARBON STEEL

(B) FERRULE螺絲帽 (NICKEL-PLATED 鍍鎳)
 PART NUMBER (P/N.) : TENG000046B
 SPECIFICATION (SPEC.) : 7.0×12.0-M3-B
 MATERIAL : SAE 1215MS CUTTING STEEL
 BEING SUITABLE TO LATEST EUROPEAN
 RoHS STANDARD IN 2,014 YEAR !

(D) REMARKS (REFERENCE VALUED) :
 a) SCREW'S LOCK FORCE: SUGGESTION FOR
 MAX. TIGHTENING TORQUE - 1.7 N-M (=
 15 IN-LBF) - SCREWS NOT SUPPLIED.
 b) MAX. STATIC LOAD = 490 N (= 110 LBF)
 c) SALT-SPRAY-TESTING : 12 HOURS.

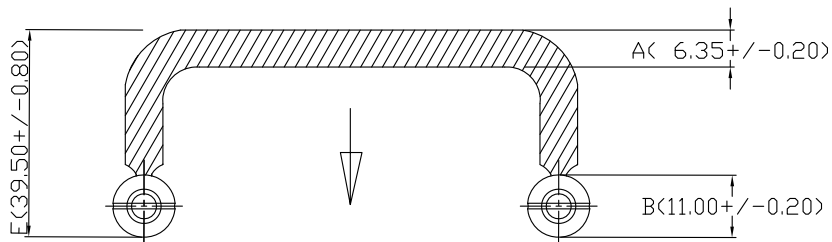


(FASTENED - BACK)

鄧記有限公司 (Tengscrew Co., Ltd.)					CLIENT	
NAME	REVOLVING-HANDLES 手動旋轉把手			APPROVED	JOHNSON	
TOL. ±	1 PLC	2 PLC	ANGLE	UNIT	MM	DESIGNED
MATERIAL	1215MS STEEL 快削鋼			SCALE	4:1	DRAWN
FINISH	NICKEL-PLATED 鍍鎳			DATE	JUNE.-28-2014	REV.
THE 3RD PROJECTION			DWG. AND PART NO.	TENG000046	1/1	0A

PROPRIETARY NOTE: THIS SHEET OF ENGINEERING DRAWINGS AND SPECIFICATIONS OF TENGSCREW CO., LTD. THIS DOCUMENT MAY NOT BE TRANSFERRED OR COPIED WITHOUT THE EXPRESS WRITTEN AUTHORIZATION OF TENGSCREW. IN ADDITIONAL, NEITHER THIS SHEET NOR THE INFORMATION IT CONTAINS MAY BE USED BY OR DISCLOSED TO ANY THIRD PARTY WITHOUT TENGSCREW'S EXPRESS WRITTEN CONSENT.

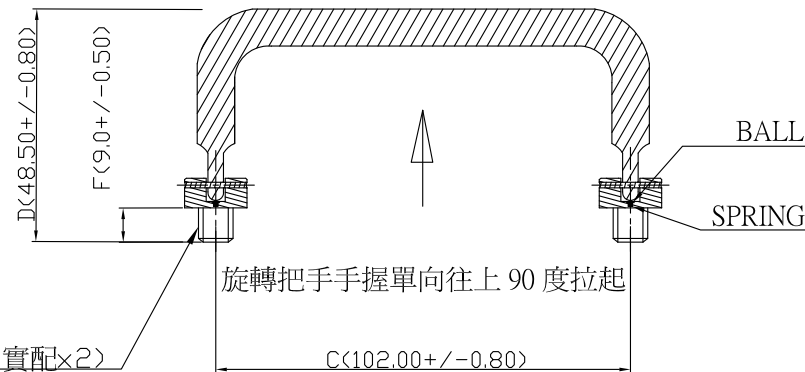
UNIT		MM		DWG. & P/N = TENG000006				REVISIONS			
LTR	DESCRIPTION	DATE	APP.								



旋轉把手手握單向往下 90 度固定



PIN INSIDE



旋轉把手手握單向往上 90 度拉起

G(M6xP.1.0-NUT 實配x2)

C(102.00 +/- 0.80)

(UN-FASTENED - FRONT) ANTI-RATTLE FRICTION FEATURE (FASTENED - FRONT)

PANEL PREPARATION AND NUT INSTALLATION

NOTE FOR REFERENCE VALUED WHEN INSERT INTO THE SERVER OR P. COMPUTER :

(A) HANDLE把手主體 (NICKEL-PLATED 鍍鎳)

PART NUMBER (P/N.) : TENG000006A
SPECIFICATION (SPEC.) : 6.35x102x37.5-A
MATERIAL : SAE 1215MS CUTTING STEEL

(B) FERRULE螺絲柱 (NICKEL-PLATED 鍍鎳)

PART NUMBER (P/N.) : TENG000006B
SPECIFICATION (SPEC.) : 11.0x17.5-M6-B
MATERIAL : SAE 1215MS CUTTING STEEL

(C) PIN實體軸心 (NICKEL-PLATED 鍍鎳)

PART NUMBER (P/N.) : TENG000006C
SPECIFICATION (SPEC.) : 2.4 x 10.8 - C
MATERIAL : SAE 1018 CARBON STEEL
BEING SUITABLE TO LATEST EUROPEAN
RoHS STANDARD IN 2,014 YEAR !

(D) BALL實體圓球 (PASSIVATED 防銹)

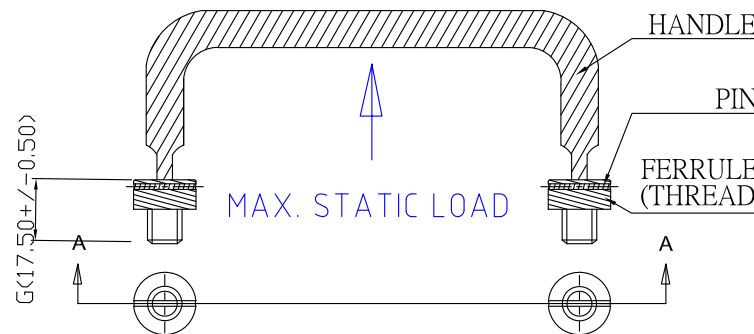
PART NUMBER (P/N.) : TENG000006C
SPECIFICATION (SPEC.) : 2.4 (ROUND)-D
MATERIAL : AISI 304 STAINLESS STEEL

(E) SPRING彈簧 (PASSIVATED 防銹)

PART NUMBER (P/N.) : TENG000006C
SPECIFICATION (SPEC.) : ACC. TO DESIGN-E
MATERIAL : AISI 304 STAINLESS STEEL

(D) REMARKS (REFERENCE VALUED) :

- NUT'S LOCK FORCE: SUGGESTION FOR
MAX. TIGHTENING TORQUE = 11.5 N-M (=
10 IN-LBF) - NUTS NOT SUPPLIED.
- MAX. STATIC LOAD = 400 N (= 90 LBF).
- SALT-SPRAY-TESTING : 12 HOURS

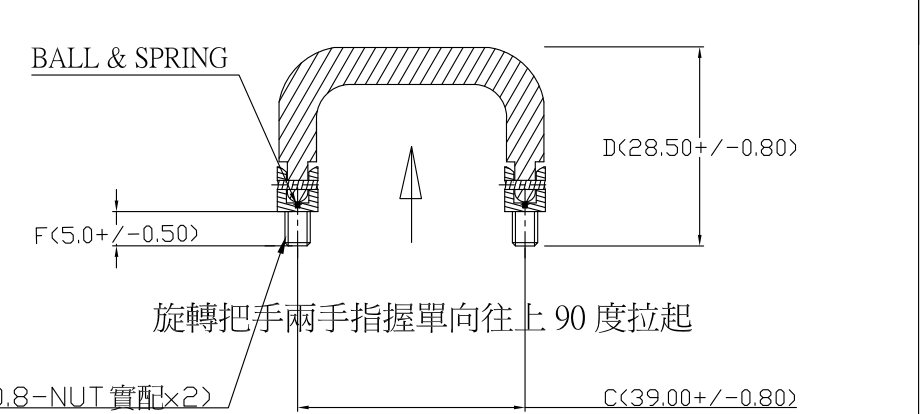
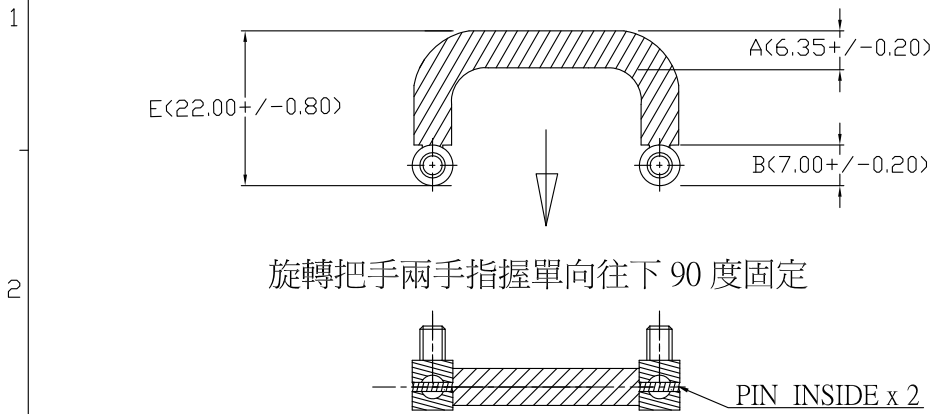


(FASTENED - BACK)

鄧記有限公司 (Tengscrew Co., Ltd.)						CLIENT		
NAME	REVOLVING-HANDLES 手動固定旋轉把手			APPROVED	JOHNSON			
TOL. ±	1 PLC	2 PLC	ANGLE	UNIT	MM	DESIGNED	TOMMY	
MATERIAL	1215MS STEEL 快削鋼			SCALE	4:1	DRAWN	TOMMY	
FINISH	NICKEL-PLATED 鍍鎳			DATE	JUNE.-28-2014	REV.	1A	
THE 3RD PROJECTION				DWG. AND PART NO.	TENG000006	1/1		

PROPRIETARY NOTE: THIS SHEET OF ENGINEERING DRAWINGS AND SPECIFICATIONS OF TENGSCREW CO., LTD. THIS DOCUMENT MAY NOT BE TRANSFERRED OR COPIED WITHOUT THE EXPRESS WRITTEN AUTHORIZATION OF TENGSCREW. IN ADDITIONAL, NEITHER THIS SHEET NOR THE INFORMATION IT CONTAINS MAY BE USED BY OR DISCLOSED TO ANY THIRD PARTY WITHOUT TENGSCREW'S EXPRESS WRITTEN CONSENT.

A	B	C	D	E	F	G	H		
UNIT	MM	DWG. & P/N = TENG000040				REVISIONS			
						LTR	DESCRIPTION	DATE	APP.



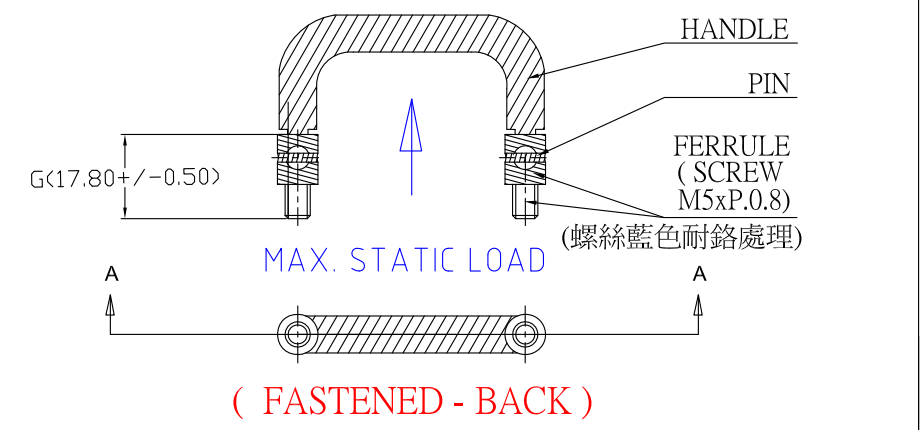
(UN-FASTENED - FRONT) ANTI-RATTLE FRICTION FEATURE (FASTENED - FRONT)

PANEL PREPARATION AND NUT INSTALLATION

NOTE FOR REFERENCE VALUED WHEN INSERT INTO THE SERVER OR P. COMPUTER :

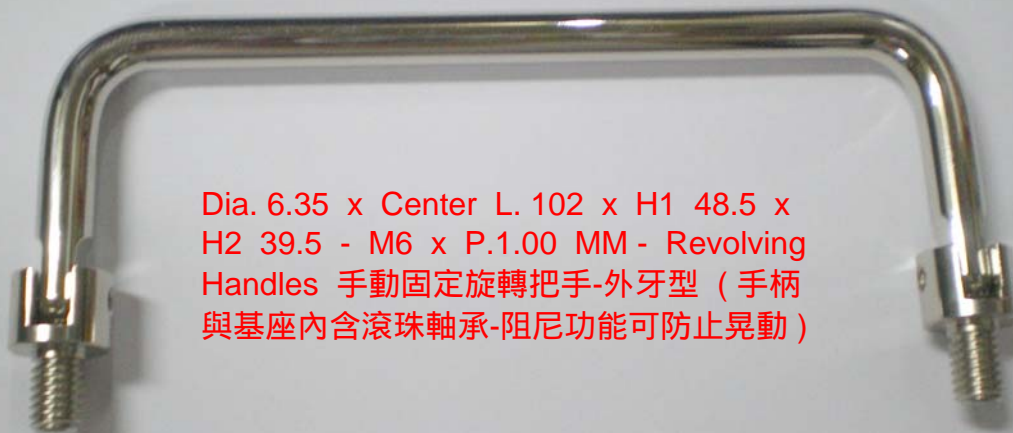
- (A) HANDLE把手主體 (ANODIZING 原色陽極)
PART NUMBER (P/N.) : TENG000040A
SPECIFICATION (SPEC.) : 6.35x39x21-A
MATERIAL : AISI 6063 ALUMINUM ALLOY
- (B) FERRULE螺絲柱 (NICKEL-PLATED 鍍鎳)
PART NUMBER (P/N.) : TENG000040B
SPECIFICATION (SPEC.) : 7.0x17.80-M5-B
MATERIAL : C3604 BRASS
- (C) PIN實體軸心 (NICKEL-PLATED 鍍鎳)
PART NUMBER (P/N.) : TENG000040C
SPECIFICATION (SPEC.) : 2.4 x 7.00 - C
MATERIAL : SAE1008CHQ CARBON STEEL
BEING SUITABLE TO LATEST EUROPEAN RoHS STANDARD IN 2,014 YEAR !

- (D) BALL實體圓球 (PASSIVATED 防銹)
PART NUMBER (P/N.) : TENG000040C
SPECIFICATION (SPEC.) : 2.4 (ROUND)-D
MATERIAL : AISI 304 STAINLESS STEEL
- (E) SPRING彈簧 (PASSIVATED 防銹)
PART NUMBER (P/N.) : TENG000040C
SPECIFICATION (SPEC.) : ACC. TO DESIGN-E
MATERIAL : AISI 304 STAINLESS STEEL
- (D) REMARKS (REFERENCE VALUED) :
a) NUT'S LOCK FORCE: SUGGESTION FOR MAX. TIGHTENING TORQUE = 11.5 N-M (= 10 IN-LBF) - NUTS NOT SUPPLIED.
b) MAX. STATIC LOAD = 400 N (= 90 LBF).
c) SALT-SPRAY-TESTING : 12 HOURS

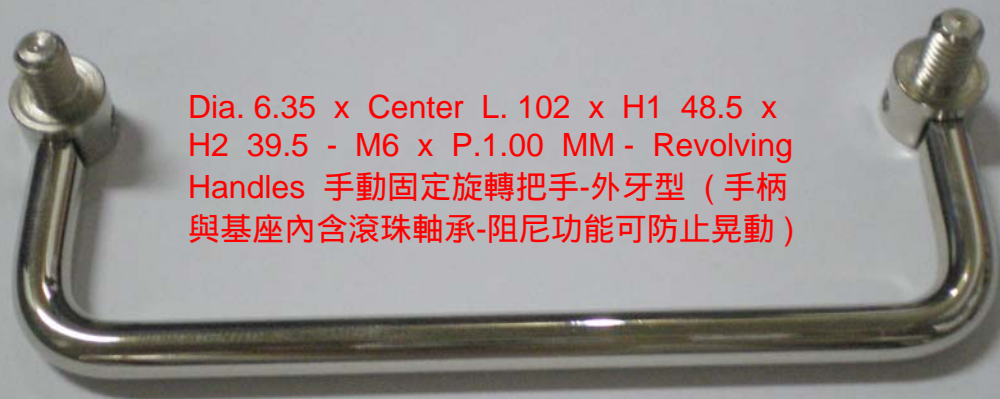


鄧記有限公司 (Tengscrew Co., Ltd.)					CLIENT	
NAME	REVOLVING-HANDLES 手動固定旋轉把手			APPROVED JOHNSON		
TOL. ±	1 PLC	2 PLC	ANGLE	UNIT	MM	DESIGNED TOMMY
MATERIAL	鋁合金, 紅銅, 碳鋼, 不銹鋼			SCALE	4:1	DRAWN TOMMY
FINISH	原色陽極, 鍍鎳, 鍍鎳, 防銹處理			DATE	JUNE-28-2014	REV. 1A
THE 3RD PROJECTION	DWG. AND PART NO.		TENG000040		1/1	

PROPRIETARY NOTE: THIS SHEET OF ENGINEERING DRAWINGS AND SPECIFICATIONS CONTAINS CONFIDENTIAL, TRADE SECRET, AND OTHER PROPRIETARY INFORMATION OF TENGSCREW CO., LTD. THIS DOCUMENT MAY NOT BE TRANSFERRED OR COPIED WITHOUT THE EXPRESS WRITTEN AUTHORIZATION OF TENGSCREW. IN ADDITIONAL, NEITHER THIS SHEET NOR THE INFORMATION IT CONTAINS MAY BE USED BY OR DISCLOSED TO ANY THIRD PARTY WITHOUT TENGSCREW'S EXPRESS WRITTEN CONSENT.



Dia. 6.35 x Center L. 102 x H1 48.5 x
H2 39.5 - M6 x P.1.00 MM - Revolving
Handles 手動固定旋轉把手-外牙型 (手柄
與基座內含滾珠軸承-阻尼功能可防止晃動)



Dia. 6.35 x Center L. 102 x H1 48.5 x
H2 39.5 - M6 x P.1.00 MM - Revolving
Handles 手動固定旋轉把手-外牙型 (手柄
與基座內含滾珠軸承-阻尼功能可防止晃動)