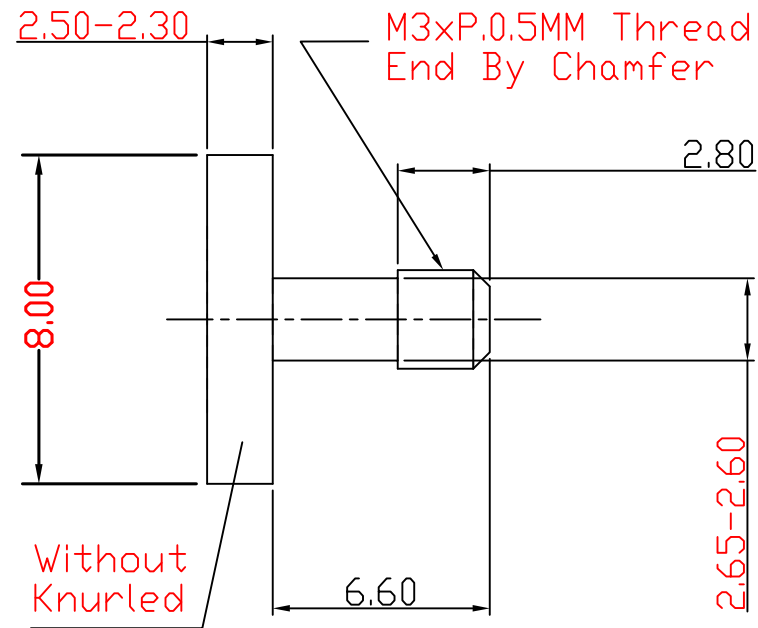
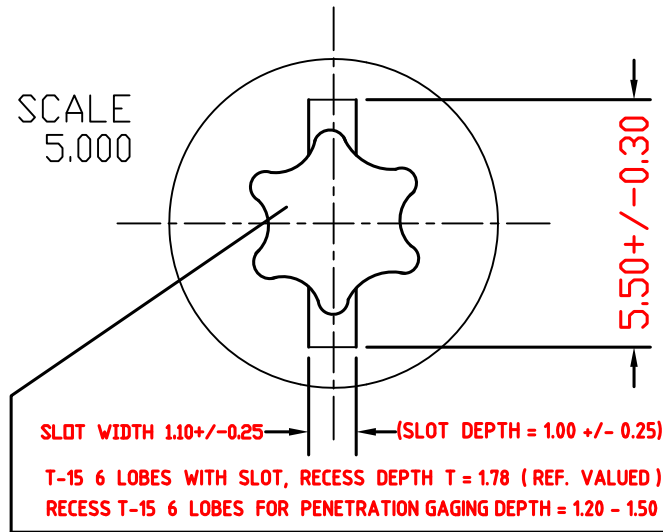


鄧記有限公司更新-102.05.15

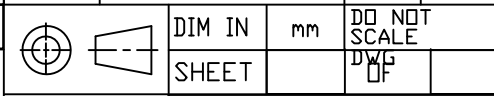
ITEM	PART NO.	PART NAME	RAW MTL COLOR	ARTWORK	MATERIAL	FINISH PROCESS	FINISH COLOR

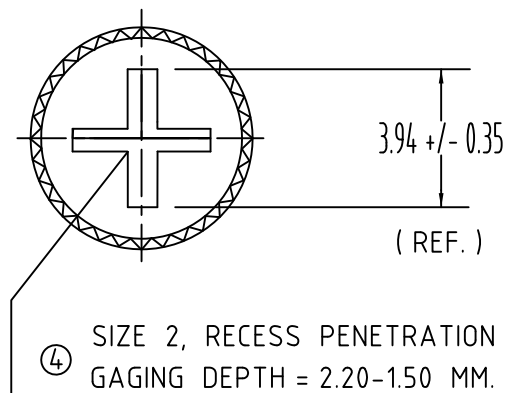
Follows So Update Size That We Can Be Directly By Forged Manufacturing
 M'tls = SAE 1018 Carbon Steel + Case Hardened + Black-Zinc-Plated CR3+
 Screw's Torque = 11 kgf-cm (Mini.), Salt-Spray-Testing = 24 Hours (Ave.)

T-15 6 Lobes With Struck Slot

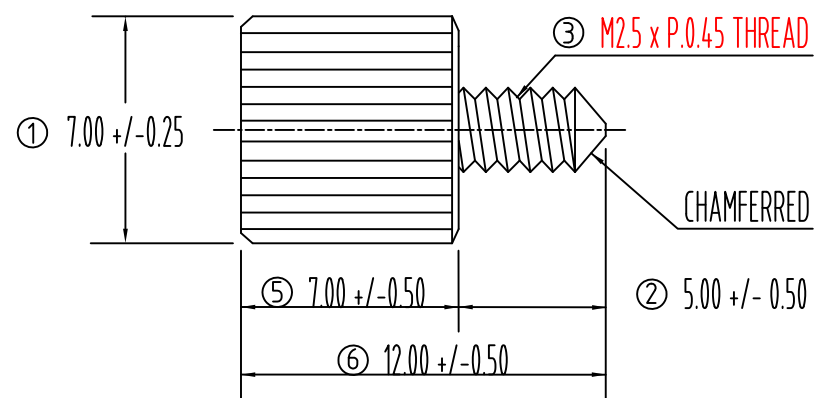


TOL ±	M1	M2	S1	S2	P1	P2	C	URS	MODEL	NAME	REV.	DESCRIPTION	SIGN	DATE
RANGE									SPROCK	PSU SCREW				
0-6	0.05	0.10	0.15	0.20	0.05	0.10	0.50		DRN	TBD	2/1 2010			
6-30	0.10	0.20	0.15	0.25	0.10	0.15	1.00		DSN (your name)	TBD	5/12 2010			
30-120	0.15	0.25	0.20	0.30	0.20	0.40	2.00		CKD	TBD	2/1 2010			
120-300	0.15	0.30	0.25	0.45	0.40	0.80	3.00		APPD	TBD	2/1 2010			
300-600	0.20	0.50	0.40	0.60	0.60	1.20	3.00		Tengscrew Co., Ltd.					
600-1200	0.30	0.80	0.70	1.10	0.80	1.50	4.00							
ANG. TOL ±	1'													
DRAWING NO.											CD 0.000			





NO. 2 PHILLIPS



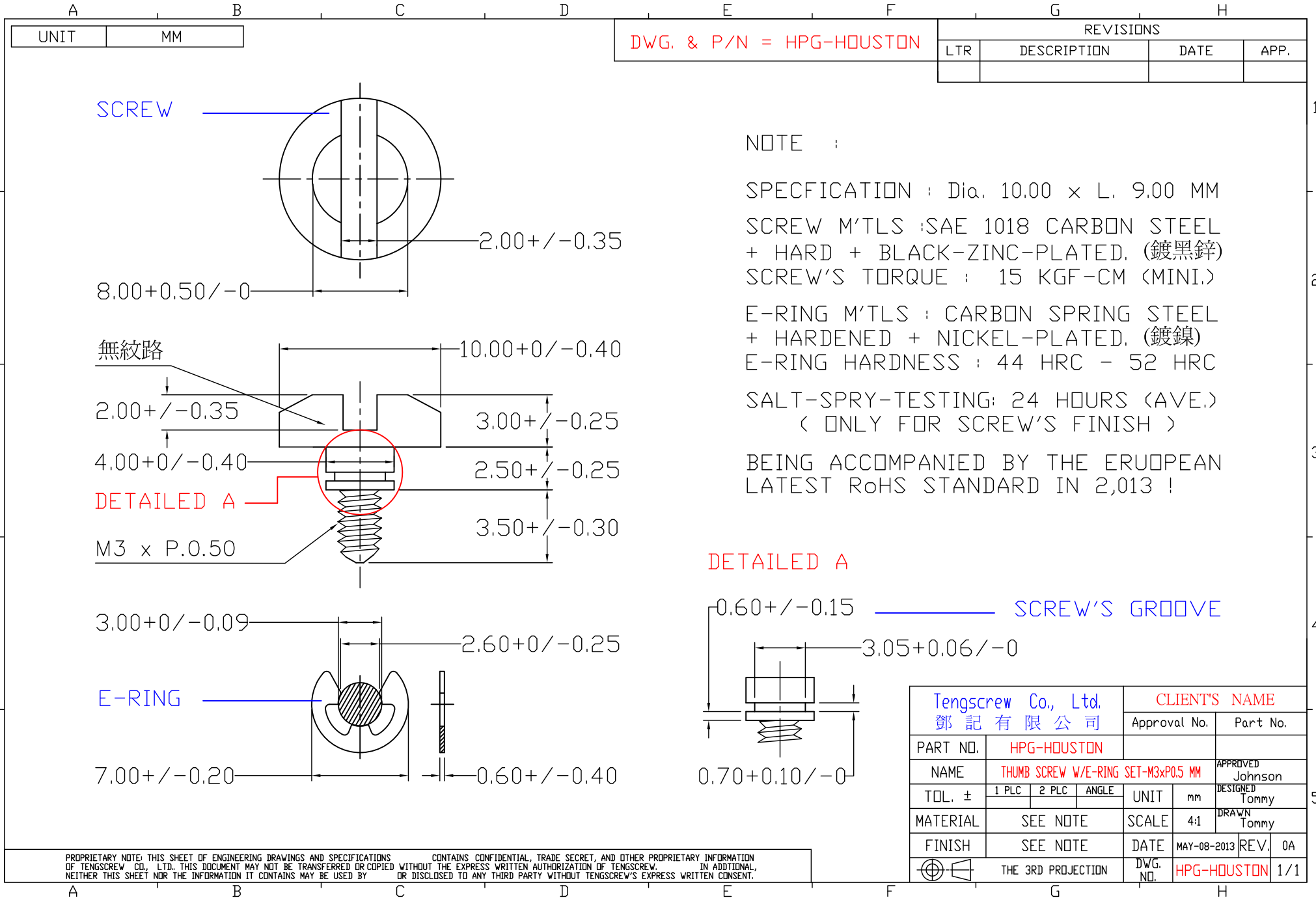
KNURLED HEAD

BEING ACCOMPANIED BY LATEST EUROPEAN RoHS STANDARD IN 2013

(1) SCREW (BLACK-ZINC-PLATED CR3+)
 螺絲主體一體冷鍛成型, 表面處理=電鍍環保三價鉻黑鋅
 頭部側面為壓花直紋紋路, 牙底倒尖角, 易於手動對準鎖入
 PART NUMBER (P/N.) : TENG000011A
 SPECIFICATION (SPEC.) : 7.00 x 12.00 - A
 MATERIAL : SAE 1008CHQ CARBON STEEL

(2) REMARKS :
 a) BREAKING FORCE = 7.00 KGF-CM (MAX.)
 b) SALT-SPRAY-TEST WITHIN 24 HOURS
 c) SEE ATTACHED MECHANICAL PROPERTIES TESTING REPOPT NO.9809503 ISSUED DATE 2009/05/03 BY TENGSCREW CO., LTD.

鄧記有限公司 (Tengscrew Co., Ltd.)			
P/N	TENG000011A	EDITION	A00
SPEC.	DIA. 7.00 x L. 12.00 MM	RANK	
NAME	簡易窄型耐候之十字手動螺絲	FILE	
CLIENT		KINDS	
DEPT.		MODEL	
P/N		DWG NO.	TENG000011A
A/N		DATE	07-MAY-2013
SIGN.	NAME	DATE	UNIT : M M
APPROVAL	JOHNSON	102/05/07	SCALE : 3 : 1
CONFIRM	JOHNSON	102/05/07	SIZE : A 4
DESIGNED	TOMMY	102/05/07	SHEET 1 OF 1
DRAWN	TOMMY	102/05/07	THE 3RD PROJECTION



UNIT	MM
------	----

DWG. & P/N = HPG-HOUSTON

REVISIONS			
LTR	DESCRIPTION	DATE	APP.

SCREW

NOTE :

SPECIFICATION : Dia. 10.00 × L. 9.00 MM
 SCREW M'TLS :SAE 1018 CARBON STEEL
 + HARD + BLACK-ZINC-PLATED. (鍍黑鋅)
 SCREW'S TORQUE : 15 KGF-CM (MINI.)
 E-RING M'TLS : CARBON SPRING STEEL
 + HARDENED + NICKEL-PLATED. (鍍鎳)
 E-RING HARDNESS : 44 HRC - 52 HRC
 SALT-SPRY-TESTING: 24 HOURS (AVE.)
 (ONLY FOR SCREW'S FINISH)
 BEING ACCOMPANIED BY THE ERUOPEAN
 LATEST RoHS STANDARD IN 2,013 !

無紋路

DETAILED A

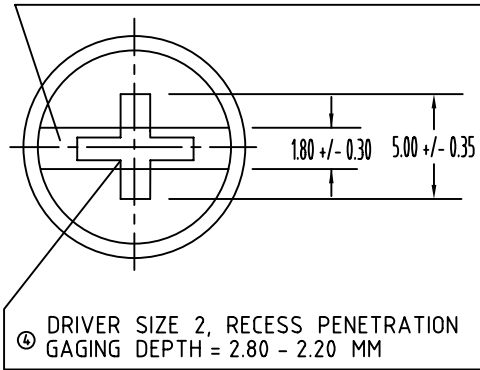
DETAILED A

SCREW'S GROOVE

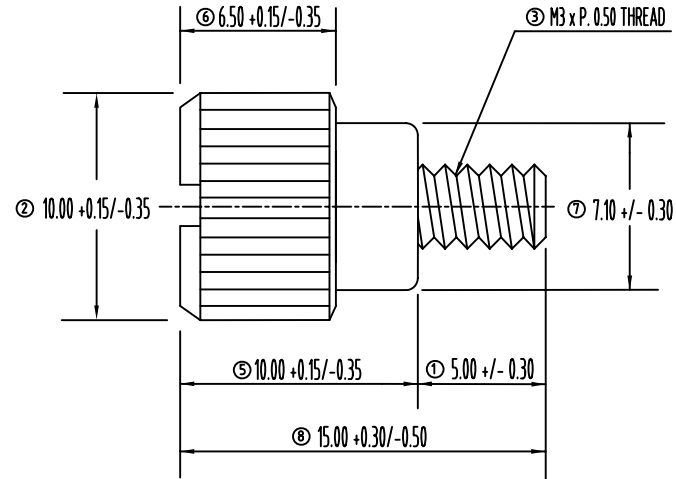
PROPRIETARY NOTE: THIS SHEET OF ENGINEERING DRAWINGS AND SPECIFICATIONS CONTAINS CONFIDENTIAL, TRADE SECRET, AND OTHER PROPRIETARY INFORMATION OF TENGSCREW CO., LTD. THIS DOCUMENT MAY NOT BE TRANSFERRED OR COPIED WITHOUT THE EXPRESS WRITTEN AUTHORIZATION OF TENGSCREW. IN ADDITIONAL, NEITHER THIS SHEET NOR THE INFORMATION IT CONTAINS MAY BE USED BY OR DISCLOSED TO ANY THIRD PARTY WITHOUT TENGSCREW'S EXPRESS WRITTEN CONSENT.

Tengscrew Co., Ltd. 鄧記有限公司		CLIENT'S NAME	
PART NO. HPG-HOUSTON		Approval No.	Part No.
NAME	THUMB SCREW W/E-RING SET-M3xP0.5 MM	APPROVED	Johnson
TOL. ±	1 PLC 2 PLC ANGLE	DESIGNED	Tommy
MATERIAL	SEE NOTE	DRAWN	Tommy
FINISH	SEE NOTE	DATE	MAY-08-2013
THE 3RD PROJECTION		REV.	0A
DWG. NO. HPG-HOUSTON		1/1	

STRUCK SLOTTED FOR DEPTH = 1.00 +/- 0.30 MM & OUTSIDE THE HEAD SURFACE



NO. 2 PHILLIPS WITH STRUCK SLOTTED



KNURLED HEAD

(1) SCREW (NICKEL PLATED IN SURFACE)

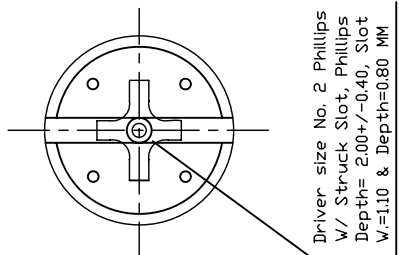
PART NUMBER (P/N.) : TENG Y000002A-0
 DESCRIPTION (DESC.) : 62-33-204-11-305
 SPECIFICATION (SPEC.) : 10.00x15.00-A
 MATERIAL : SAE 1008CHQ CARBON STEEL
 (#6-32 Thread, Thread Length = 6.00 MM,
 Dia. 10.00 x L. 16.00 MM ARE AVAILBLE)

(2) REMARKS :

a) BREAKING FORCE = 12.00 KGF-CM (MAX.)
 b) SALT-SPRAY-TEST WITHIN 12 HOURS
 c) SEE ATTACHED MECHANICAL PROPERTIES
 TESTING REPOPT NO.9809503 ISSUED DATE
 2009/05/03 BY TENGSCREW CO., LTD.
 ACCOMPANED BY LATEST RoHS STANDARD

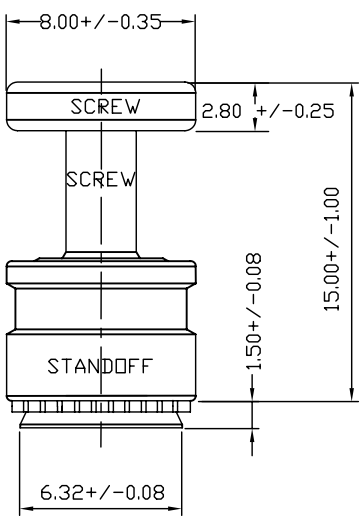
鄧記有限公司 (Tengscrew Co., Ltd.)

P/N	TENG Y000002-0		EDITION	A00
DESC.	62-33-204-11-305		RANK	
SPEC.	DIA. 10.00 x L. 15.00 MM		FILE	
CLIENT			KINDS	
			MODEL	
P/N	TENG Y000002-0		DWG NO.	TENG Y000002-0
SPEC.	62-33-204-11-305		DATE	30-APR.-10
SIGN.	NAME	DATE	UNIT : M M	
APPROVAL	JOHNSON	99/04/30	SCALE : 3 : 1	
CONFIRM	JOHNSON	99/04/30	SIZE : A 4	
DESIGNED	TOMMY	99/04/29	SHEET 1 OF 1	
DRAWN	TOMMY	99/04/29	THE 3RD PROJECTION	

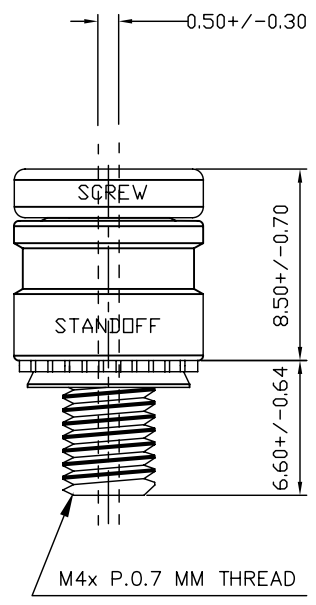


TOTAL FLOAT OF SCREW IN STANDOFF WITH PUNCH & ANVIL SURFACE PARALLEL

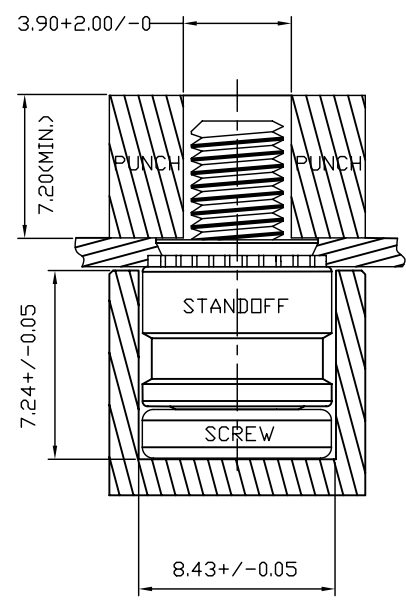
- NOTE :
- a) Spec. : 8.00x15.10 MM, Without Knurled Head, Press-In-Style, Miniature.
 - b) Screw : SAE 1215MS Cutting Steel, M4 x P.0.7MM + Hardened + Nickel-Plated.
 - c) Standoff : SAE 1215MS Cutting Steel, Hardened + Nickel-Plated.
 - d) Pushout Force : 66.00 kgf (Ave.) (See Attached Mechanical Properties Test Report No. 9403161 Issued Date 2005/03/14 By Tengscrew Co., Ltd.)
 - e) Screw's Torque : 12 kgf-cm (Min.)
 - f) Thickness Of Steel-Plate: 1.50/1.60 MM
 - g) Suggestion Hole Dia. = 6.44+/-0.04 MM & Installation Force= 1,200 Kgf (Ave.)
 - h) Min. Dist. Hole C/L To Edge : 6.70 MM
 - i) Being Accompanied By European RoHS Standard In 2,012 Year !



UNFASTENED



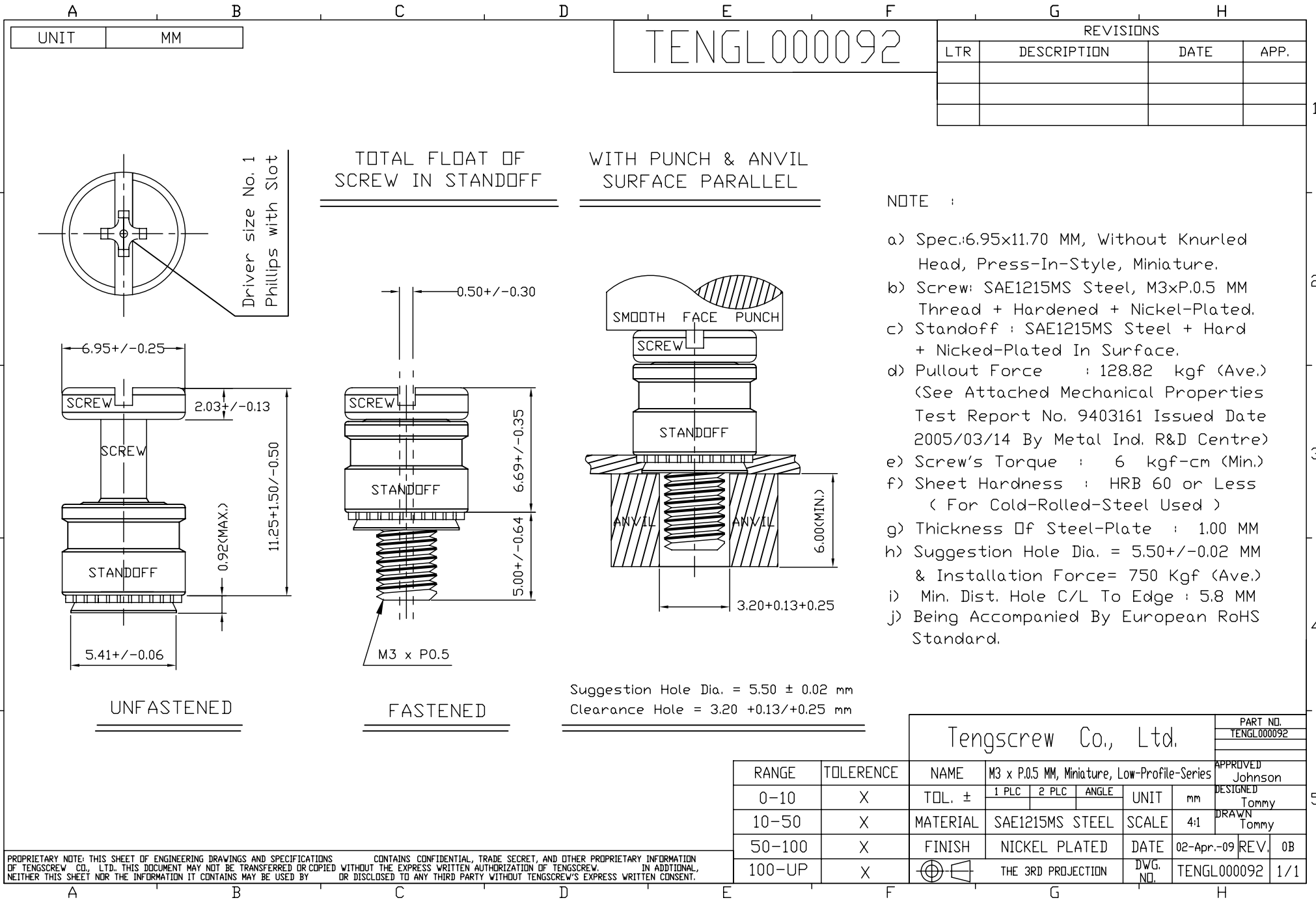
FASTENED



SMOOTH FACE ANVIL

Tengscrew Co., Ltd. (鄧記有限公司)							CLIENT'S NAME	
							APPROVAL NO.	
							APPROVED Johnson	
							DESIGNED Tommy	
							DRAWN Tommy	
RANGE	TOLERANCE	NAME	M4xP.0.7MM Threaded, Miniature, Low-Profile-Series			UNIT	mm	
0-10	X	TOL. ±	1 PLC	2 PLC	ANGLE			
10-50	X	MATERIAL	SAE 1215MS STEEL			SCALE	4:1	
50-100	X	FINISH	NICKEL-PLATED			DATE	28-Apr.-12	
100-UP	X	THE 3RD PROJECTION	DWG. P/N.		TENGL000095	REV.	0B	

PROPRIETARY NOTE: THIS SHEET OF ENGINEERING DRAWINGS AND SPECIFICATIONS OF TENGSCREW CO., LTD. THIS DOCUMENT MAY NOT BE TRANSFERRED OR COPIED NEITHER THIS SHEET NOR THE INFORMATION IT CONTAINS MAY BE USED BY CONTAINS CONFIDENTIAL, TRADE SECRET, AND OTHER PROPRIETARY INFORMATION WITHOUT THE EXPRESS WRITTEN AUTHORIZATION OF TENGSCREW. IN ADDITIONAL, OR DISCLOSED TO ANY THIRD PARTY WITHOUT TENGSCREW'S EXPRESS WRITTEN CONSENT.



TENGL000092

REVISIONS			
LTR	DESCRIPTION	DATE	APP.

TOTAL FLOAT OF SCREW IN STANDOFF
WITH PUNCH & ANVIL SURFACE PARALLEL

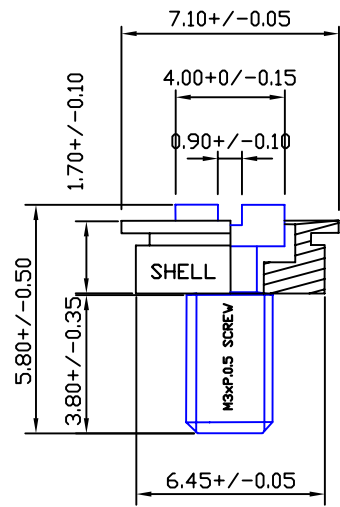
- NOTE :
- a) Spec.:6.95x11.70 MM, Without Knurled Head, Press-In-Style, Miniature.
 - b) Screw: SAE1215MS Steel, M3xP.0.5 MM Thread + Hardened + Nickel-Plated.
 - c) Standoff : SAE1215MS Steel + Hard + Nicked-Plated In Surface.
 - d) Pullout Force : 128.82 kgf (Ave.) (See Attached Mechanical Properties Test Report No. 9403161 Issued Date 2005/03/14 By Metal Ind. R&D Centre)
 - e) Screw's Torque : 6 kgf-cm (Min.)
 - f) Sheet Hardness : HRB 60 or Less (For Cold-Rolled-Steel Used)
 - g) Thickness Of Steel-Plate : 1.00 MM
 - h) Suggestion Hole Dia. = 5.50+/-0.02 MM & Installation Force= 750 Kgf (Ave.)
 - i) Min. Dist. Hole C/L To Edge : 5.8 MM
 - j) Being Accompanied By European RoHS Standard.

Suggestion Hole Dia. = 5.50 ± 0.02 mm
 Clearance Hole = 3.20 +0.13/+0.25 mm

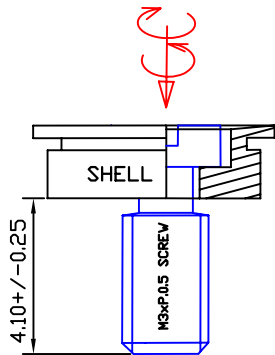
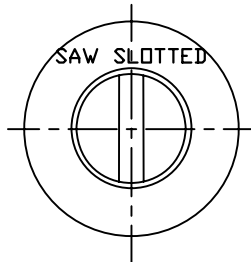
Tengscrew Co., Ltd.						PART NO.	
						TENGL000092	
M3 x P.0.5 MM, Miniature, Low-Profile-Series						APPROVED	
						Johnson	
1 PLC 2 PLC ANGLE						DESIGNED	
						Tommy	
SAE1215MS STEEL						DRAWN	
						Tommy	
DATE						02-Apr-09	REV. 0B
THE 3RD PROJECTION						DWG. NO.	TENGL000092 1/1

PROPRIETARY NOTE: THIS SHEET OF ENGINEERING DRAWINGS AND SPECIFICATIONS CONTAINS CONFIDENTIAL, TRADE SECRET, AND OTHER PROPRIETARY INFORMATION OF TENGSCREW CO., LTD. THIS DOCUMENT MAY NOT BE TRANSFERRED OR COPIED WITHOUT THE EXPRESS WRITTEN AUTHORIZATION OF TENGSCREW. IN ADDITIONAL, NEITHER THIS SHEET NOR THE INFORMATION IT CONTAINS MAY BE USED BY OR DISCLOSED TO ANY THIRD PARTY WITHOUT TENGSCREW'S EXPRESS WRITTEN CONSENT.

b) SCREW RETENTION ONLY

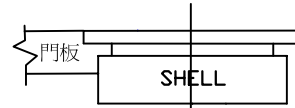


UNFASTENED



d) & e) TIGHTENING & BACK-OUT FORCE

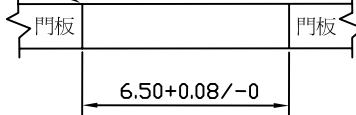
FASTENED



c) SHELL PUSH-OUT

MOUNTING FORCE DIRECTION

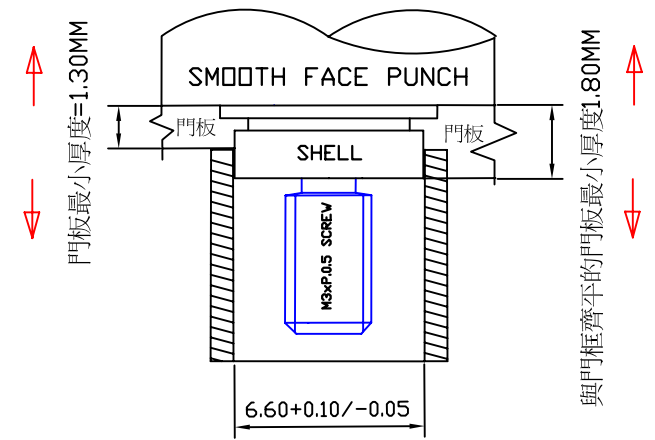
EDGE OF HOLE MUST BE SHARP ON THIS SIDE



SUGGESTION PANEL HOLE DIA. = 6.50+0.08/-0 MM

INSTALLATION FM UP TO DOWN

WITH PUNCH & TOOL SURFACE PARALLEL



f) & g) WORKING & ULTIMATE FORCE

TOOL BACK UP

PANEL PREPARATION AND INSTALLATION

(1) SCREW (PASSIVATED IN SURFACE)
PART NUMBER (P/N.) : TENGME00001A
DESCRIPTION (DESC.) : B5-10-502-20-305
SPECIFICATION (SPEC.) : 4.00 x 580 - A
MATERIAL : AISI 303 STAINLESS STEEL

(2) SHELL (PASSIVATED IN SURFACE)
PART NUMBER (P/N.) : TENGME00001D
DESCRIPTION (DESC.) : B5-10-502-20-305
SPECIFICATION (SPEC.) : 7.10 x 1.70 - D
MATERIAL : AISI 303 STAINLESS STEEL

(PLEASE SEE ABOVE PANEL PREPARATION
INSTALLATION FOR FAVOUR REFERENCES)

(3) REMARKS :
a) INSTALLATION FORCE = 2,350 LBS AVE
(IN CARBON STEEL FOR 1/4 HARD OR SOFTER)
b) SCREW RETENTION FORCE = 160 LBS AVE
c) PULL-OUT FORCE = 450 LBS AVERAGE
d) RECOMMENDED MAX. TIGHTENING FORCE = 5 IN-LBS OR 0.60 N.M.
e) BACK-OUT TORQUE = 5 IN-LBS AVERAGE
f) WORKING LOAD = 200 LBS (MAX. VALUED)
g) ULTIMATE LOAD = 460 LBS AVERAGE
h) SHEET HARDNESS = HRB 55 (MAX.)
i) SUGGESTION HOLE DIA.= 6.50+0.08/-0 MM
THICKNESS OF STEEL PLATE = 1.3-1.8 MM

登記有限公司 (Tengscrew Co., Ltd.)

P/N	TENGME00001		EDITION	A00
DESC.	B5-10-502-20-305		RANK	
SPEC.	DIA. 7.10 x L. 5.80 MM		FILE	
CLIENT			MODEL	
P/N	SOUTHCO F5-90-402-20		DWG NO.	TENGME00001
SPEC.	DIA. 7.10 x L. 5.80 MM		DATE	23-DEC-09
SIGN.	NAME	DATE	UNIT : M M	
APPROVAL	JOHNSON	98/12/23	SCALE : 3 : 1	
CONFIRM	JOHNSON	98/12/23	SIZE : A 4	
DESIGNED	TOMMY	98/12/22	SHEET 1 OF 1	
DRAWN	TOMMY	98/12/22	THE 3RD PROJECTION	