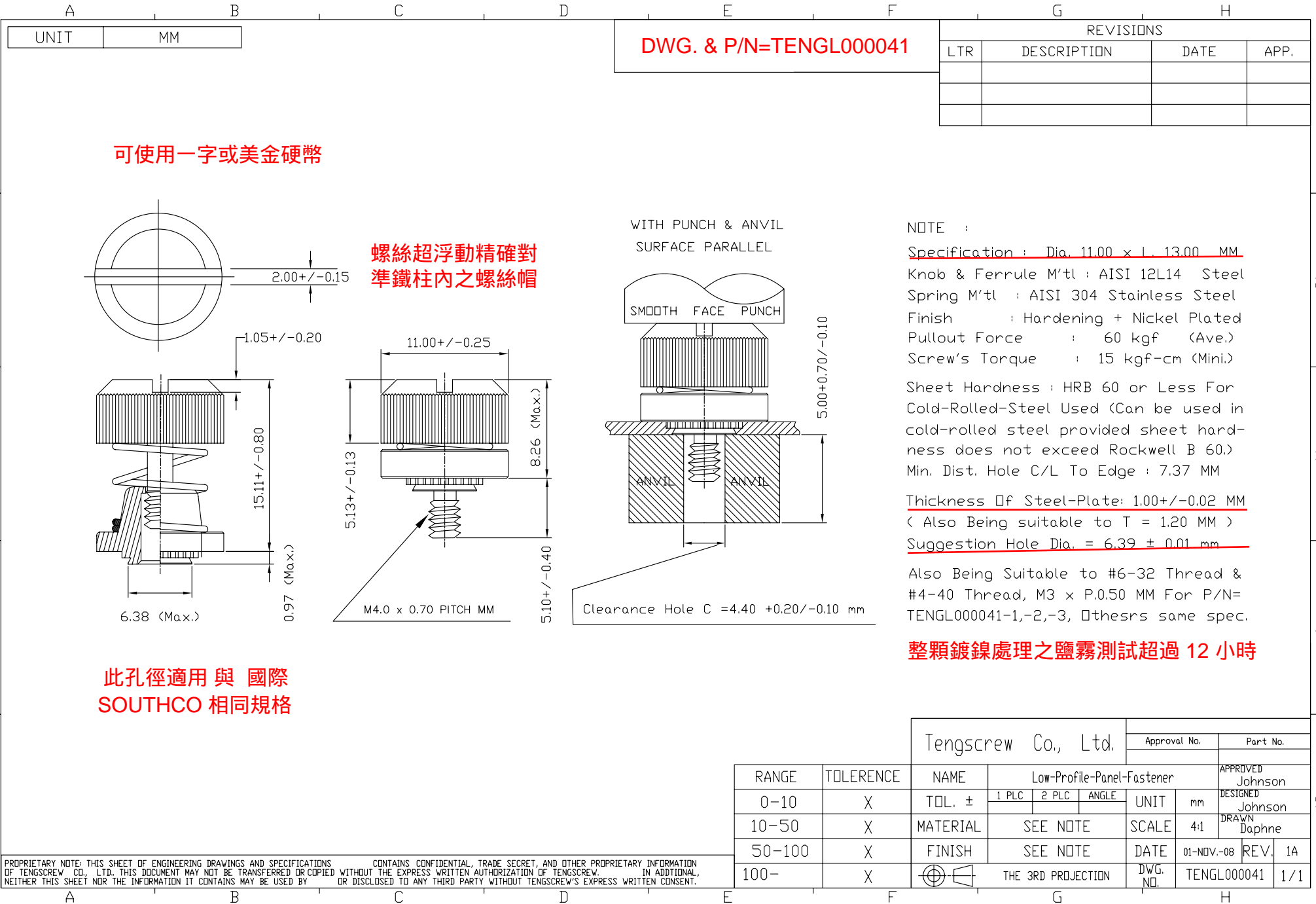


PROPRIETARY NOTE: THIS SHEET OF ENGINEERING DRAWINGS AND SPECIFICATIONS OF TENGSCREW CO., LTD. THIS DOCUMENT MAY NOT BE TRANSFERRED OR COPIED WITHOUT THE EXPRESS WRITTEN AUTHORIZATION OF TENGSCREW. IN ADDITIONAL, NEITHER THIS SHEET NOR THE INFORMATION IT CONTAINS MAY BE USED BY CONTAINS CONFIDENTIAL, TRADE SECRET, AND OTHER PROPRIETARY INFORMATION OR DISCLOSED TO ANY THIRD PARTY WITHOUT TENGSCREW'S EXPRESS WRITTEN CONSENT.



可使用一字或美金硬幣

螺絲超浮動精確對準鐵柱內之螺絲帽

DWG. & P/N=TENGL000041

REVISIONS			
LTR	DESCRIPTION	DATE	APP.

NOTE :

Specification : Dia. 11.00 x L 13.00 MM
 Knob & Ferrule M'tl : AISI 12L14 Steel
 Spring M'tl : AISI 304 Stainless Steel
 Finish : Hardening + Nickel Plated
 Pullout Force : 60 kgf (Ave.)
 Screw's Torque : 15 kgf-cm (Mini.)

Sheet Hardness : HRB 60 or Less For Cold-Rolled-Steel Used (Can be used in cold-rolled steel provided sheet hardness does not exceed Rockwell B 60.)
 Min. Dist. Hole C/L To Edge : 7.37 MM

Thickness Of Steel-Plate: 1.00 +/- 0.02 MM
 (Also Being suitable to T = 1.20 MM)
Suggestion Hole Dia. = 6.39 ± 0.01 mm

Also Being Suitable to #6-32 Thread & #4-40 Thread, M3 x P.050 MM For P/N=TENGL000041-1,-2,-3, others same spec.

整顆鍍鎳處理之鹽霧測試超過 12 小時

此孔徑適用與 國際 SOUTHCO 相同規格

Tengscrew Co., Ltd.					Approval No.		Part No.	
RANGE	TOLERANCE	NAME	Low-Profile-Panel-Fastener			APPROVED	Johnson	
0-10	X	TOL. ±	1 PLC	2 PLC	ANGLE	DESIGNED	Johnson	
10-50	X	MATERIAL	SEE NOTE			DRAWN	Daphne	
50-100	X	FINISH	SEE NOTE			DATE	01-NOV.-08	REV. 1A
100-	X	THE 3RD PROJECTION	DWG. NO.			TENGL000041	1/1	

PROPRIETARY NOTE: THIS SHEET OF ENGINEERING DRAWINGS AND SPECIFICATIONS OF TENGSCREW CO., LTD. THIS DOCUMENT MAY NOT BE TRANSFERRED OR COPIED WITHOUT THE EXPRESS WRITTEN AUTHORIZATION OF TENGSCREW. IN ADDITIONAL, NEITHER THIS SHEET NOR THE INFORMATION IT CONTAINS MAY BE USED BY OR DISCLOSED TO ANY THIRD PARTY WITHOUT TENGSCREW'S EXPRESS WRITTEN CONSENT.

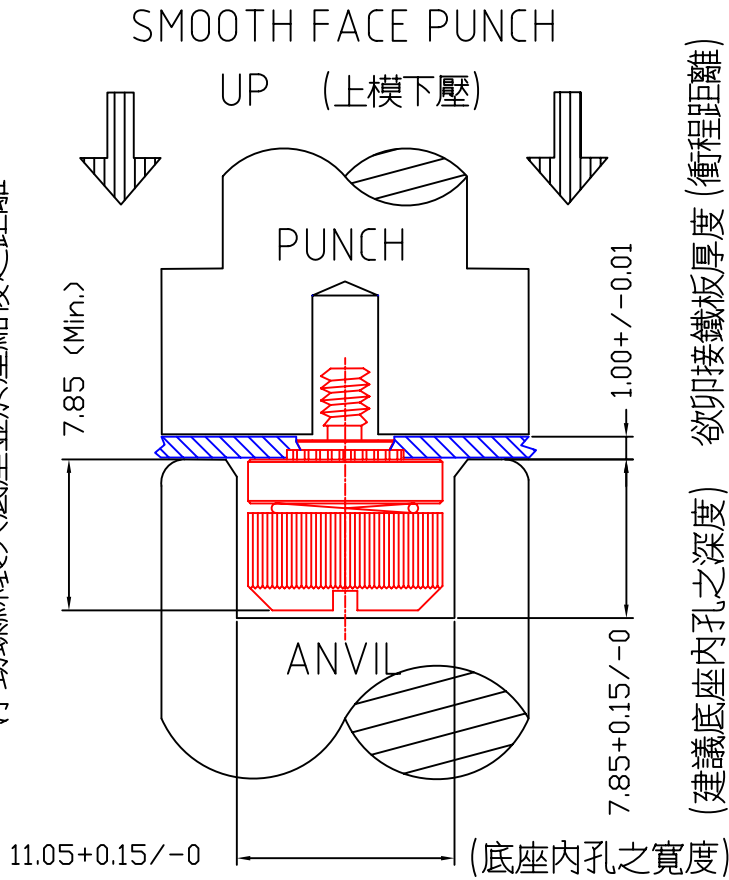
A	B
UNIT	MM

PANEL PREPARATION AND INSTALLATION

REVISIONS			
LTR	DESCRIPTION	DATE	APP.

PANEL PREPARATION
AND INSTALLATION

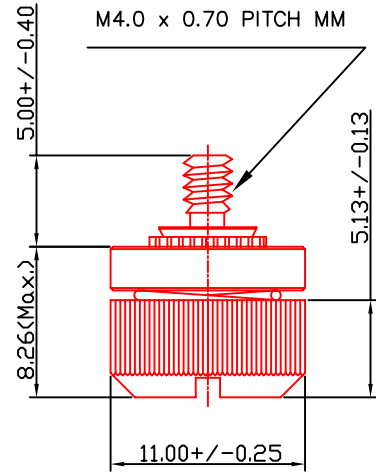
浮動螺絲裝入底座並於壓縮後之距離



欲印接鐵板厚度 (衝程距離)
(建議底座內孔之深度)

(底座內孔之寬度)

FASTENED



DOWN (底座固定)
SOLID BACK-UP TOOL

Tengscrew Co., Ltd.		Client's Name.	
		Approval No.	Part No.
		APPROVED Johnson	
		DESIGNED Tommy	
		DRAWN Daphne	
RANGE	TOLERANCE	NAME	Panel Preparation and Installation
0-10	X	TOL. ±	1 PLC 2 PLC ANGLE
10-50	X	MATERIAL	SKD 11
50-100	X	HARDNESS	HRC 57 - 60
100-	X		
		UNIT	mm
		SCALE	4:1
		DATE	01-Nov.-08
		REV.	0A
		DWG. NO.	TENGL000041
			1/1

PROPRIETARY NOTE: THIS SHEET OF ENGINEERING DRAWINGS AND SPECIFICATIONS CONTAINS CONFIDENTIAL, TRADE SECRET, AND OTHER PROPRIETARY INFORMATION OF TENGSCREW CO., LTD. THIS DOCUMENT MAY NOT BE TRANSFERRED OR COPIED WITHOUT THE EXPRESS WRITTEN AUTHORIZATION OF TENGSCREW. IN ADDITION, NEITHER THIS SHEET NOR THE INFORMATION IT CONTAINS MAY BE USED BY OR DISCLOSED TO ANY THIRD PARTY WITHOUT TENGSCREW'S EXPRESS WRITTEN CONSENT.

A B C D E F G H

1
2
3
4
5

1
2
3
4
5