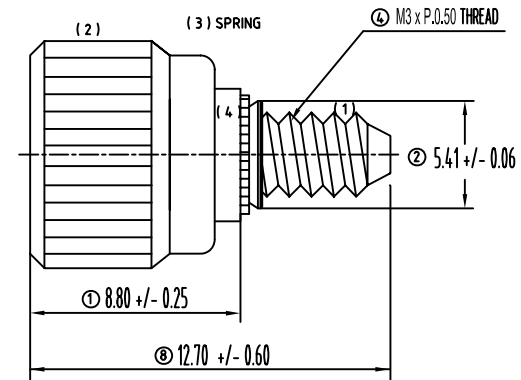
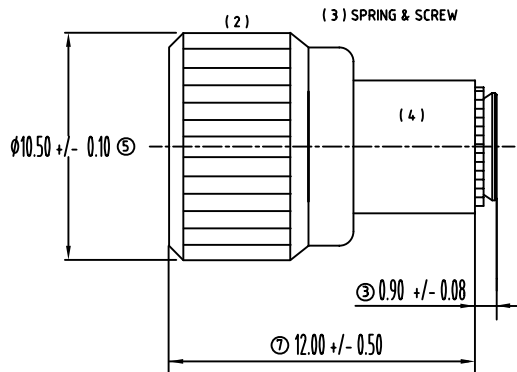


DRIVER SIZE NO. 2 PHILLIPS FOR PENETRATION
 GAGING DEPTH = 1.60 - 2.10 MM, WITH STRUCK
 SLOTTED FOR DEPTH = 1.00 / WIDTH = 1.00 MM.



CAPTIVE-FASTENERS BE ACCOMPANIED BY LATEST EUROPEAN RoHS STANDARD

(1) SCREW (HARDENED + ZINC CR 3+)
 PART NUMBER (P/N.) : TENGL000061A
 DESCRIPTION (DESC.) : 92-10-221-20-M3
 SPECIFICATION (SPEC.) : 6.90x12.70-A
 MATERIAL : SAE 1018 CARBON STEEL

(2) KNOB (NATURAL ANODIZING)
 PART NUMBER (P/N.) : TENGL000061B
 DESCRIPTION (DESC.) : 92-10-221-20-M3
 SPECIFICATION (SPEC.) : 10.50x7.90-B
 MATERIAL : AISI 6061 ALUMINIUM

(3) SPRING (PASSIVATED IN SURFACE)
 PART NUMBER (P/N.) : TENGL000061C
 DESCRIPTION (DESC.) : 92-20-221-20-M3
 SPECIFICATION (SPEC.) : 0.25x4.30x11.00-C
 MATERIAL : AISI 304 STAINLESS STEEL

(4) FERRULE (HARDENED + NICKEL-PLATED)
 PART NUMBER (P/N.) : TENGL000061D
 DESCRIPTION (DESC.) : 92-10-221-20-M3
 SPECIFICATION (SPEC.) : 8.0x05.95-D
 MATERIAL : SAE 1215MS STEEL

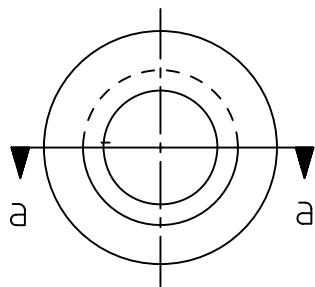
(5) REMARKS :
 a) PULL-OUT FORCE = 60.00 KGF AVERAGE,
 SIDE LOAD AGAINST UNFASTENED KNOB
 = 19.00 KGF AVERAGE.
 SEE ATTACHED MECHANICAL PROPERTIES
 TESTING REPOPT NO.9409303 ISSUED DATE
 2005/10/03 BY TENGSCREW CO., LTD.
 b) SUGGESTION HOLE DIA.= 5.49 - 5.51 MM
 THICKNESS OF STEEL PLATE = 1.00 MM.
 (ALSO BEING SUITABLE TO T= 1.20 MM)

鄧記有限公司 (Tengscrew Co., Ltd.)

P/N	TENGL000061	EDITION	A03
DESC.	92-10-221-20-M3	RANK	
SPEC.	DIA. 10.50 x L. 12.70 MM	FILE	
CLIENT		KINDS	
P/N		MODEL	
DESC.		DWG NO.	TENGL000061
SPEC.		DATE	27-Oct-08
SIGN.	NAME	DATE	UNIT : M M
APPROVAL	JOHNSON	97/10/27	SCALE : 3 : 1
CONFIRM	TOMMY	97/10/25	SIZE : A 4
DESIGNED	DAPHNE	97/10/24	SHEET 1 OF 1
DRAWN	DAPHNE	97/10/24	THE 3RD PROJECTION

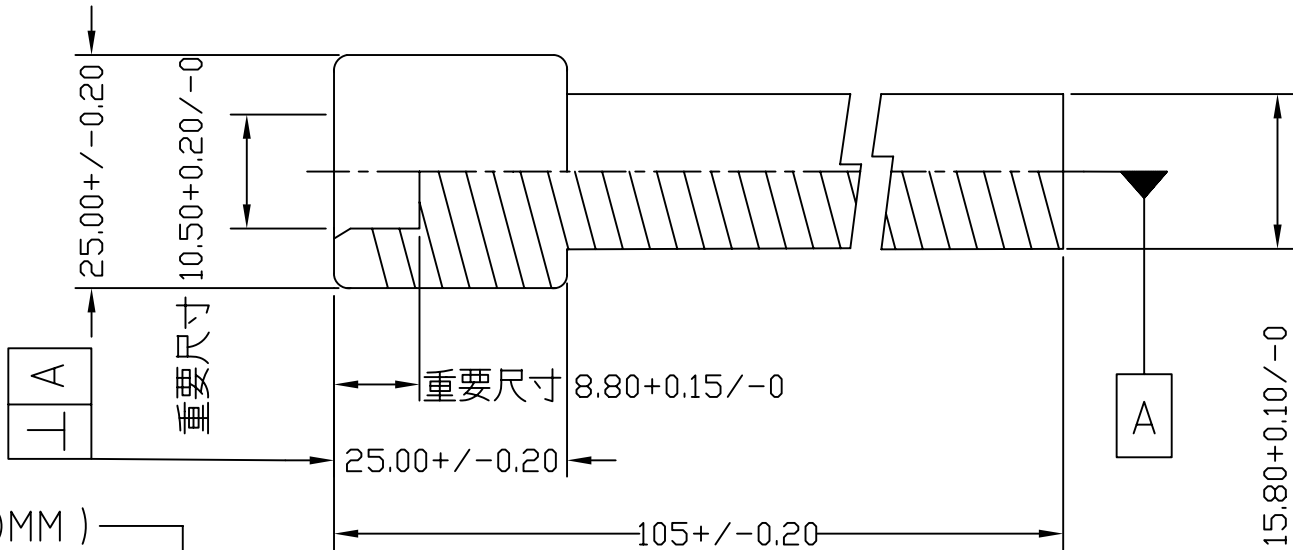
UNIT : MM

MATERIALS = SKD 11, HARDNESS = HRC 57 - 60



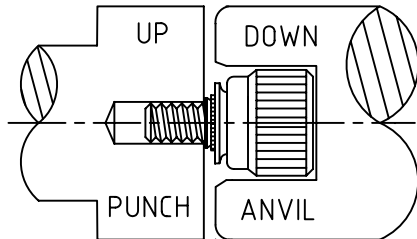
MOULDING A2

(鋁蓋外徑=10.50+/-0.10MM)



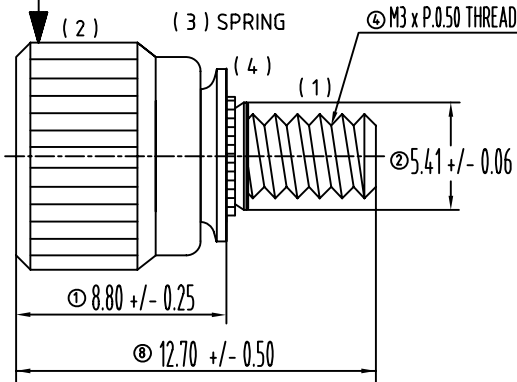
PANEL PREPARATION AND INSTALLATION

SMOOTH FACE PUNCH



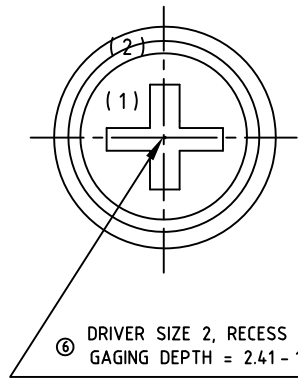
FASTENED

SOLID BACK-UP TOOL



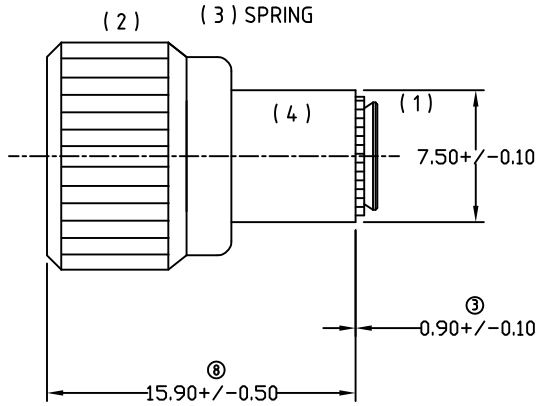
鄧記有限公司 (Tengscrew Co., Ltd.)

P/N	TENGL000061 (MOULDING A2)	EDITION	A02
DESC.	92-10-221-20-M3	RANK	
SPEC.	DIA. 10.50 x L. 12.70 MM	FILE	
CLIENT		KINDS	
P/N		MODEL	
DESC.		DWG NO.	TENGL000061
SPEC.		DATE	27-Oct-08
SIGN.	NAME	DATE	UNIT : M M
APPROVAL	JOHNSON	97/10/27	SCALE : 3 : 1
CONFIRM	TOMMY	97/10/25	SIZE : A 4
DESIGNED	DAPHNE	97/10/24	SHEET 1 OF 1
DRAWN	DAPHNE	97/10/24	THE 3RD PROJECTION



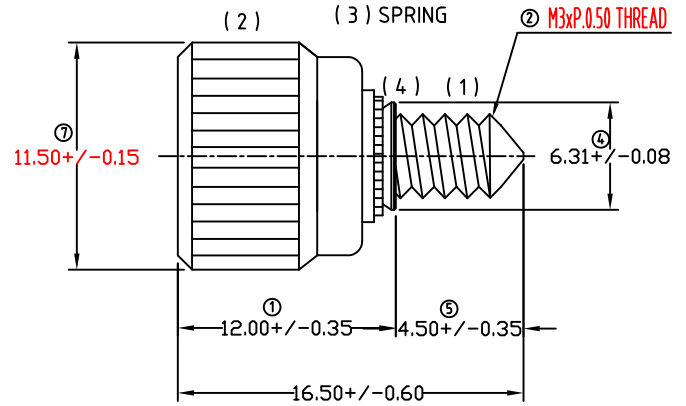
⑥ DRIVER SIZE 2, RECESS PENETRATION GAGING DEPTH = 2.41-1.83 MM.

No. 2 Phillips



(Thread In The Ferrule)

Un-fastened



Fastened

(Being Accompanied By Latest European RoHS Standard In 2,013 Year)

(1) SCREW (HARDENED + PASSIVATED)
 PART NUMBER (P/N.) : B05000132500A
 DESCRIPTION (DESC.) : 92-80-321-20-305
 SPECIFICATION (SPEC.) : 8.00x16.50-A
 MATERIAL : AISI 410 STAINLESS STEEL

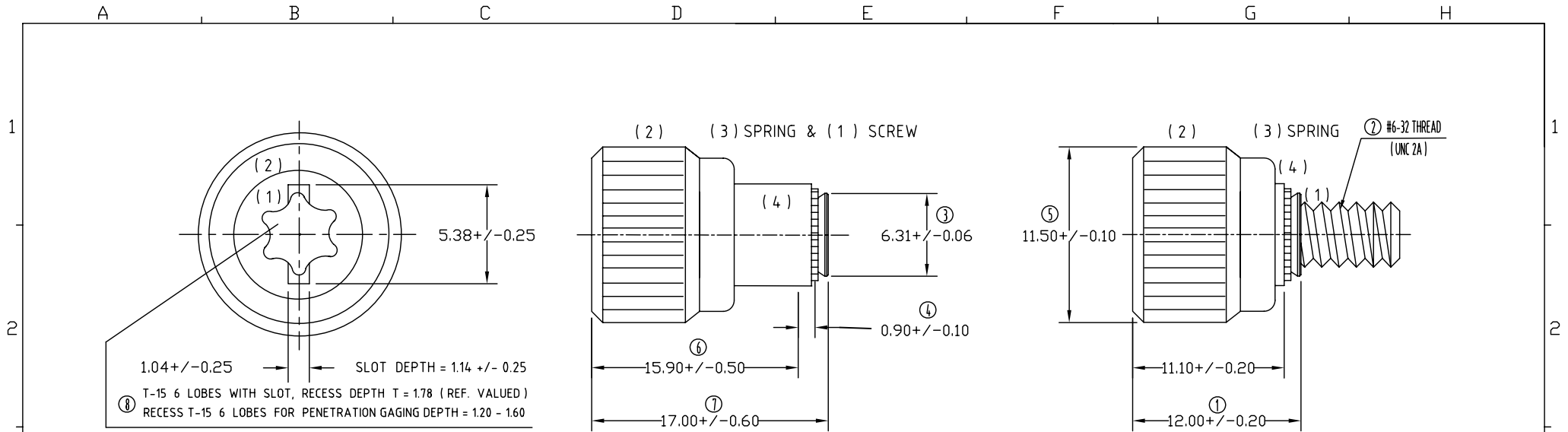
(2) KNOB (BLACK-ANODIZING 黑色陽極處理)
 PART NUMBER (P/N.) : B05000132500B
 DESCRIPTION (DESC.) : 92-80-321-20-305
 SPECIFICATION (SPEC.) : 11.50x9.90-B
 MATERIAL : AISI 6061 ALUMINIUM

(3) SPRING (PASSIVATED IN SURFACE)
 PART NUMBER (P/N.) : B05000132500C
 DESCRIPTION (DESC.) : 92-80-321-20-305
 SPECIFICATION (SPEC.) : 0.30x5.20x13.00-C
 MATERIAL : AISI 304 STAINLESS STEEL

(4) FERRULE (HARD+ZINCPLATED 鍍鋅 CR3+)
 PART NUMBER (P/N.) : B05000132500D
 DESCRIPTION (DESC.) : 92-80-321-20-305
 SPECIFICATION (SPEC.) : 9.00x8.35-D
 MATERIAL : AISI 12L14 CUTTING STEEL

(5) REMARKS :
 a) PULL-OUT FORCE = 60.00 KGF AVERAGE,
 SIDE LOAD AGAINST UNFASTENED KNOB
 = 19.00 KGF AVERAGE FOR STEEL PLATE.
 b) TORSIONAL STRENGTH = 15.00 KGF-CM
 FOR SCREW'S MINI. VALUED.
 c) SUGGESTION HOLE DIA.= 6.41 - 6.42 MM
 THICKNESS OF STEEL PLATE = 1.00 MM,
 ALSO BEING SUITABLE TO T = 1.20 MM.
 (PLATE HARDNESS = 150HV/78HRB <MAX.>)

Tengscrew Co., Ltd. (鄧記有限公司)			
P/N	B05000132500	EDITION	A04
DESC.	92-80-321-20-305	RANK	
SPEC.	DIA. 11.50 x L. 16.50 MM	FILE	
CLIENT		KINDS	
P/N		MODEL	
APPROVAL NO.		DWG NO.	B05000132500
		DATE	06-DEC.-2011
SIGN.	NAME	DATE	UNIT : M M
APPROVAL	JOHNSON	100/12/06	SCALE : 3 : 1
CONFIRM	JOHNSON	100/12/06	SIZE : A 4
DESIGNED	TOMMY	100/12/06	SHEET 1 OF 1
DRAWN	TOMMY	100/12/06	THE 3RD PROJECTION



6 LOBES T-15 W/STRUCK SLOT

UN-FASTENED

FASTENED

(1) SCREW (HARDENED + PASSIVATED)
 PART NUMBER (P/N.) : TENGA000001A
 DESCRIPTION (DESC.) : 92-80-361-20-632
 SPECIFICATION (SPEC.) : 7.90x17.00-A
 MATERIAL : AISI 410 STAINLESS STEEL

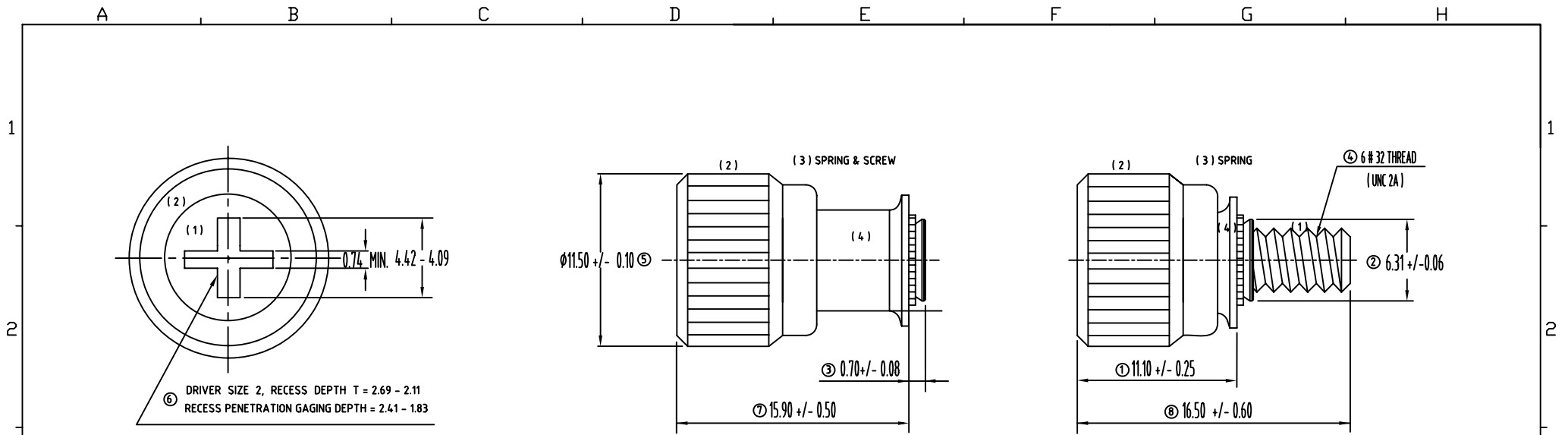
(2) KNOB (BLUE ANODIZING IN SURFACE)
 PART NUMBER (P/N.) : TENGA000001B
 DESCRIPTION (DESC.) : 92-80-361-20-632
 SPECIFICATION (SPEC.) : 11.50x9.95-B
 MATERIAL : AISI 6061 ALUMINIUM

(3) SPRING (PASSIVATED IN SURFACE)
 PART NUMBER (P/N.) : TENGA000001C
 DESCRIPTION (DESC.) : 92-80-361-20-632
 SPECIFICATION (SPEC.) : 0.30x5.20x13.00-C
 MATERIAL : AISI 304 STAINLESS STEEL

(4) CYLINDER (HARDENED + ZINC/CLEAR)
 PART NUMBER (P/N.) : TENGA000001D
 DESCRIPTION (DESC.) : 92-80-361-20-632
 SPECIFICATION (SPEC.) : 9.0x08.40-D
 MATERIAL : AISI 12L14 STEEL

(5) REMARKS :
 a) PULLOUT FORCE = 141.97 LBS AVERAGE,
 SIDE LOAD AGAINST UNFASTENED KNOB
 = 40.65 LBS AVERAGE.
 SEE ATTACHED MECHANICAL PROPERTIES
 TESTING REPOPT NO. 9102141 ISSUED DATE
 2002/02/25 BY METAL INDU. R&D CENTRE.
 b) SUGGESTION HOLE DIA.= 6.38 - 6.40 MM
 THICKNESS OF STEEL PLATE = 1.00 MM.

Tengscrew Co., Ltd.			
P/N	TENGA000001	EDITION	02
DESC.	92-80-361-20-632	RANK	
SPEC.	DIA. 11.50 x L. 17.00 MM	FILE	
CLIENT		KINDS	
P/N		MODEL	
DESC.		DWG NO.	TENGA000001
SPEC.		DATE	15-JAN.-08
SIGN.	NAME	DATE	UNIT : M M
APPROVAL	JOHNSON	97/01/15	SCALE : 3 : 1
CONFIRM	TOMMY	97/01/14	SIZE : A 4
DESIGNED	DAPHNE	97/01/12	SHEET 1 OF 1
DRAWN	DAPHNE	97/01/12	THE 3RD PROJECTION



CAPTIVE-FASTENERS BE ACCOMPANIED BY LATEST EUROPEAN RoHS STANDARD

(1) SCREW (HARDENED + PASSIVATED)
 PART NUMBER (P/N.) : TENGL000021A
 DESCRIPTION (DESC.) : 92-80-321-20-632
 SPECIFICATION (SPEC.) : 7.90x16.50-A
 MATERIAL : AISI 410 STAINLESS STEEL

(2) KNOB (NATURAL ANODIZING)
 PART NUMBER (P/N.) : TENGL000021B
 DESCRIPTION (DESC.) : 92-80-321-20-632
 SPECIFICATION (SPEC.) : 11.50x9.90-B
 MATERIAL : AISI 6061 ALUMINIUM

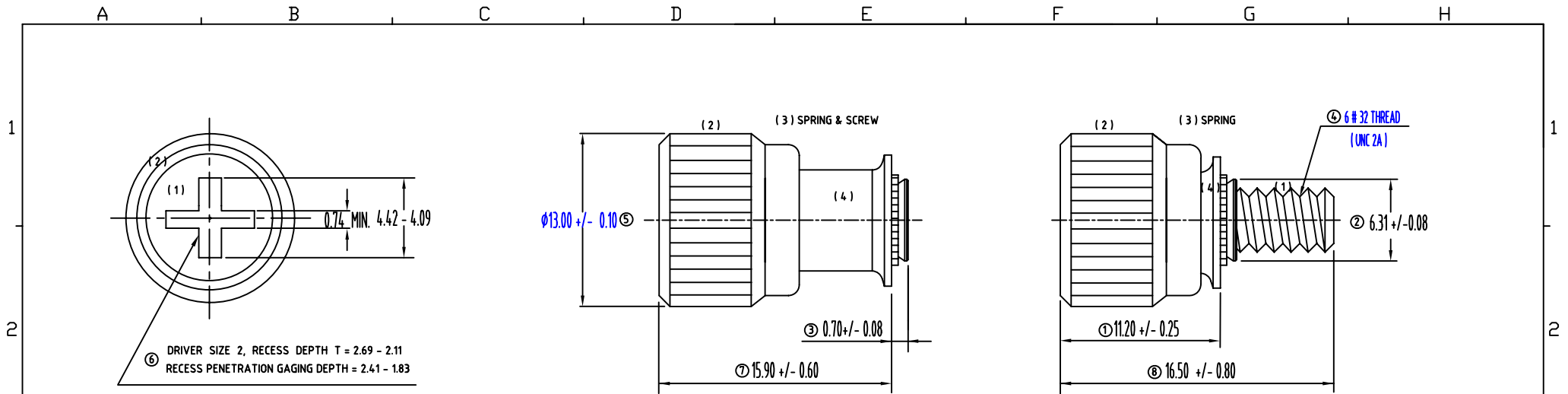
(3) SPRING (PASSIVATED IN SURFACE)
 PART NUMBER (P/N.) : TENGL000021C
 DESCRIPTION (DESC.) : 92-80-321-20-632
 SPECIFICATION (SPEC.) : 0.30x5.20x13.00-C
 MATERIAL : AISI 304 STAINLESS STEEL

(4) FERRULE (HARDENED+ZINCPLATED CR3+)
 PART NUMBER (P/N.) : TENGL000021D
 DESCRIPTION (DESC.) : 92-80-321-20-632
 SPECIFICATION (SPEC.) : 9.0x08.25-D
 MATERIAL : SAE 1215MS CUTTING STEEL

(5) REMARKS :
 a) PULL-OUT FORCE = 50.00 KGF AVERAGE,
 SIDE LOAD AGAINST UNFASTENED KNOB
 = 19.00 KGF AVERAGE.
 SEE ATTACHED MECHANICAL PROPERTIES
 TESTING REPOPT NO.9409301 ISSUED DATE
 2005/10/03 BY TENGSCREW CO., LTD.
 b) SUGGESTION HOLE DIA.= 6.39 - 6.41 MM
 THICKNESS OF STEEL PLATE = 0.80 MM.
 (ALSO BEING SUITABLE TO T= 1.00 MM)

鄧記有限公司 (Tengscrew Co., Ltd.)

P/N	TENGL000021-1	EDITION	A01
DESC.	92-80-321-20-632	RANK	
SPEC.	DIA. 11.50 x L. 16.50 MM	FILE	
CLIENT		KINDS	
P/N		MODEL	
DESC.		DWG NO.	TENGL000021-1
SPEC.		DATE	21-JUL.-08
SIGN.	NAME	DATE	UNIT : M M
APPROVAL	JOHNSON	97/07/21	SCALE : 3 : 1
CONFIRM	TOMMY	97/07/21	SIZE : A 4
DESIGNED	DAPHNE	97/07/19	SHEET 1 OF 1
DRAWN	DAPHNE	97/07/19	THE 3RD PROJECTION



NO. 2 PHILLIPS

UN-FASTENED (THREAD IN FERRULE)

FASTENED

BEING ACCOMPANIED BY LATEST EUROPEAN RoHS STANDARD! (SAME SOUTHCO)

(1) SCREW (HARDENED + PASSIVATED)
 PART NUMBER (P/N.): TENGL000021-2A
 DESCRIPTION (DESC.): 92-80-321-20-632
 SPECIFICATION (SPEC.): 7.90x16.50-A
 MATERIAL: AISI 410 STAINLESS STEEL

(2) KNOB (BLACK ANODIZING IN SURFACE)
 PART NUMBER (P/N.): TENGL000021-2B
 DESCRIPTION (DESC.): 92-80-321-20-632
 SPECIFICATION (SPEC.): 13.00x9.90-B
 MATERIAL: AISI 6061 ALUMINIUM

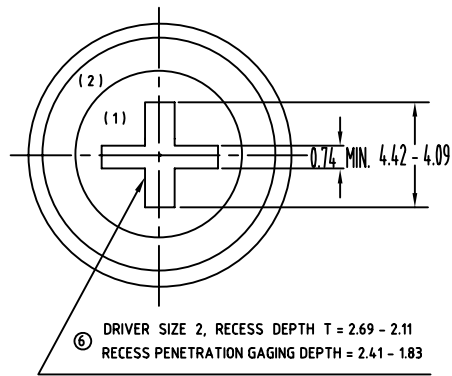
(3) SPRING (PASSIVATED IN SURFACE)
 PART NUMBER (P/N.): TENGL000021-2C
 DESCRIPTION (DESC.): 92-80-321-20-632
 SPECIFICATION (SPEC.): 0.30x5.20x13.00-C
 MATERIAL: AISI 304 STAINLESS STEEL

(4) FERRULE (HARDENED + NICKEL-PLATED)
 PART NUMBER (P/N.): TENGL000021-2D
 DESCRIPTION (DESC.): 92-80-321-20-632
 SPECIFICATION (SPEC.): 9.0x08.25-D
 MATERIAL: SAE 1215MS CUTTING STEEL

(5) REMARKS:
 a) PULL-OUT FORCE = 50.00 KGF AVERAGE,
 SIDE LOAD AGAINST UNFASTENED KNOB
 = 19.00 KGF AVERAGE.
 SEE ATTACHED MECHANICAL PROPERTIES
 TESTING REPOPT NO.9409301 ISSUED DATE
 2005/10/03 BY TENGSCREW CO., LTD.
 b) SUGGESTION HOLE DIA.= 6.39 - 6.41 MM
 THICKNESS OF STEEL PLATE = 0.80 MM.
 (ALSO BEING SUITABLE TO T= 1.00 MM)

鄧記有限公司 (Tengscrew Co., Ltd.)

P/N	TENGL000021-2	EDITION	A00
DESC.	92-80-321-20-632	RANK	
SPEC.	DIA. 13.00 x L. 16.50 MM	FILE	
CLIENT		KINDS	
P/N		MODEL	
NAME		DWG NO.	TENGL000021-2
NO.		DATE	18-May-12
SIGN.	NAME	DATE	UNIT: M M
APPROVAL	JOHNSON	101/05/18	SCALE: 3:1
CONFIRM	JOHNSON	101/05/18	SIZE: A 4
DESIGNED	TOMMY	101/05/16	SHEET 1 OF 1
DRAWN	TOMMY	101/05/16	THE 3RD PROJECTION

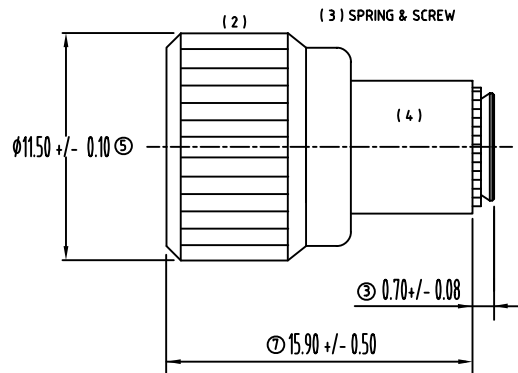


NO. 2 PHILLIPS

(1) SCREW (HARDENED + PASSIVATED)
 PART NUMBER (P/N.) : TENGL000021A
 DESCRIPTION (DESC.) : 92-80-321-20-632
 SPECIFICATION (SPEC.) : 7.90×16.50-A
 MATERIAL : AISI 410 STAINLESS STEEL

(2) KNOB (NATURAL ANODIZING)
 PART NUMBER (P/N.) : TENGL000021B
 DESCRIPTION (DESC.) : 92-80-321-20-632
 SPECIFICATION (SPEC.) : 11.50×9.90-B
 MATERIAL : AISI 6061 ALUMINIUM

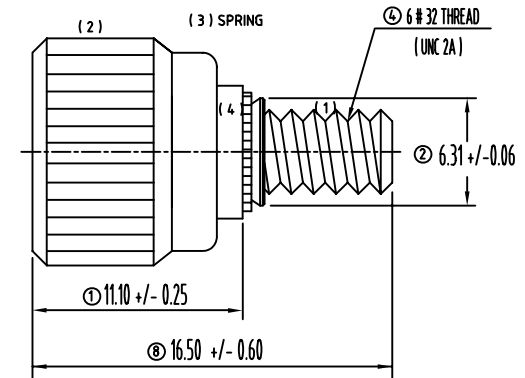
(3) SPRING (PASSIVATED IN SURFACE)
 PART NUMBER (P/N.) : TENGL000021C
 DESCRIPTION (DESC.) : 92-80-321-20-632
 SPECIFICATION (SPEC.) : 0.30×5.20×13.00-C
 MATERIAL : AISI 304 STAINLESS STEEL



UNFASTENED(THREAD IN FERRULE)

(4) FERRULE (HARDENED+ZINCPLATED CR3+)
 PART NUMBER (P/N.) : TENGL000021D
 DESCRIPTION (DESC.) : 92-80-321-20-632
 SPECIFICATION (SPEC.) : 9.0×08.25-D
 MATERIAL : AISI 12L14 CUTTING STEEL

(5) REMARKS :
 a) PULL-OUT FORCE = 50.00 KGF AVERAGE,
 SIDE LOAD AGAINST UNFASTENED KNOB
 = 19.00 KGF AVERAGE.
 SEE ATTACHED MECHANICAL PROPERTIES
 TESTING REPOPT NO.9409301 ISSUED DATE
 2005/10/03 BY TENGSCREW CO., LTD.
 b) SUGGESTION HOLE DIA.= 6.39 - 6.41 MM
 THICKNESS OF STEEL PLATE = 0.80 MM.
 (ALSO BEING SUITABLE TO T= 1.00 MM)



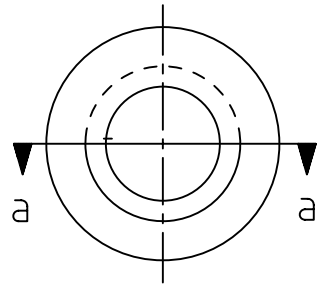
FASTENED

登記有限公司 (Tengscrew Co., Ltd.)

P/N	TENGL000021-A	EDITION	A01
DESC.	92-80-321-20-632	RANK	
SPEC.	DIA. 11.50 x L. 16.50 MM	FILE	
CLIENT		KINDS	
P/N		MODEL	
DESC.		DWG NO.	TENGL000021-A
SPEC.		DATE	21-JUL.-08
SIGN.	NAME	DATE	UNIT : M M
APPROVAL	JOHNSON	97/07/21	SCALE : 3 : 1
CONFIRM	TOMMY	97/07/21	SIZE : A 4
DESIGNED	DAPHNE	97/07/19	SHEET 1 OF 1
DRAWN	DAPHNE	97/07/19	THE 3RD PROJECTION

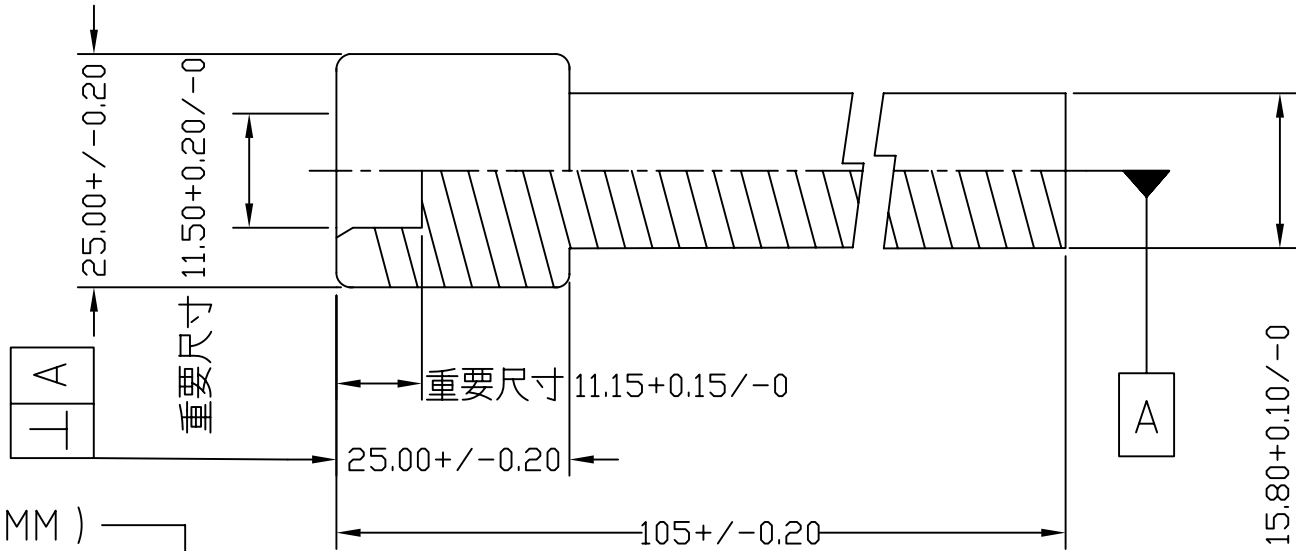
UNIT : MM

MATERIALS = SKD 11, HARDNESS = HRC 57 - 60



MOULDING A1

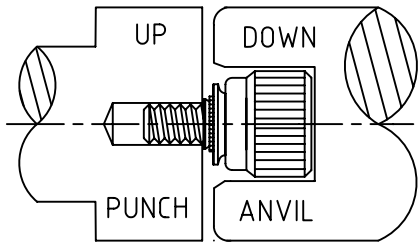
(鋁蓋外徑=11.50+/-0.10MM)



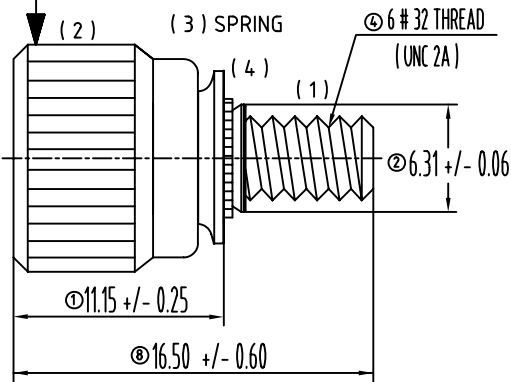
PANEL PREPARATION AND INSTALLATION

FASTENED

SMOOTH FACE PUNCH



SOLID BACK-UP TOOL



鄧記有限公司 (Tengscrew Co., Ltd.)

P/N	TENGL000021 (MOULDING A1)	EDITION	A02
DESC.	92-80-321-20-632	RANK	
SPEC.	DIA. 11.50 x L. 16.50 MM	FILE	
CLIENT		KINDS	
P/N		MODEL	
DESC.		DWG NO.	TENGL000021
SPEC.		DATE	21-JUL.-08
SIGN.	NAME	DATE	UNIT : M M
APPROVAL	JOHNSON	97/07/21	SCALE : 3 : 1
CONFIRM	TOMMY	97/07/21	SIZE : A 4
DESIGNED	DAPHNE	97/07/19	SHEET 1 OF 1
DRAWN	DAPHNE	97/07/19	THE 3RD PROJECTION