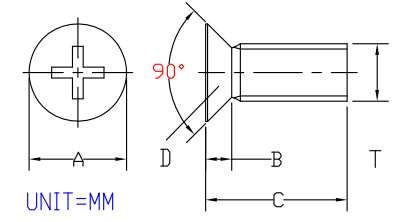
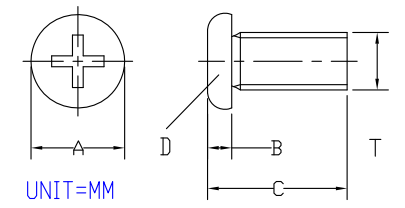


INQUIRY FOR ORDERS = PART NO.-TxC-D (MM/INCH)				SUS304 FLAT<JIS-JAPAN / IFI-U.S.A.> SCREWS										
T THREAD	A DIAMETER	B THICK	DRIVER SIZE	C LENGTH										D HEAD TYPE
a) MATERIALS = AISI 304 STAINLESS STEEL, FLAT HEAD, PHILLIPS, MACHINE SCREWS BY JIS (MM) STANDARD.														
M3xP.0.50	5.75	1.75	2	6	8	10	12	16	20	25	30	40		FLAT HEAD
M4xP.0.70	7.75	2.30	2	6	8	10	12	16	20	25	30	40	50	FLAT HEAD
M5xP.0.80	9.20	2.80	2	6	8	10	12	16	20	25	30	40	50	FLAT HEAD
M6xP.1.00	11.65	3.40	3		8	10	12	16	20	25	30	40	50	FLAT HEAD
M8xP.1.25	15.60	4.40	4					16	20	25	30	40	50	FLAT HEAD
b) MATERIALS = AISI 304 STAINLESS STEEL, PAN HEAD, PHILLIPS, MACHINE SCREWS BY JIS (MM) STANDARD.														
M3xP.0.50	5.25	2.00	2	6	8	10	12	16	20	25	30	40	50	PAN HEAD
M4xP.0.70	6.80	2.60	2	6	8	10	12	16	20	25	30	40	50	PAN HEAD
M5xP.0.80	8.70	3.30	2	6	8	10	12	16	20	25	30	40	50	PAN HEAD
M6xP.1.00	10.15	3.90	3	6	8	10	12	16	20	25	30	40	50	PAN HEAD
M8xP.1.25	13.60	5.20	4			10	12	16	20	25	30	40	50	PAN HEAD
c) MATERIALS = AISI 304 STAINLESS STEEL, FLAT HEAD, PHILLIPS, MACHINE SCREWS BY IFI (INCH) STANDARD.														
#2-56	0.160"	0.051"	1			3/16	1/4	5/16	3/8	1/2				FLAT HEAD
#4-40	0.210"	0.067"	1			3/16	1/4	5/16	3/8	1/2	5/8			FLAT HEAD
#6-32	0.262"	0.083"	2				1/4	5/16	3/8	1/2	5/8	3/4		FLAT HEAD
#8-32	0.312"	0.100"	2				1/4	5/16	3/8	1/2	5/8	3/4	1	FLAT HEAD
#10-32	0.363"	0.116"	2				1/4	5/16	3/8	1/2	5/8	3/4	1	FLAT HEAD
d) MATERIALS = AISI 304 STAINLESS STEEL, PAN HEAD, PHILLIPS, MACHINE SCREWS BY IFI (INCH) STANDARD.														
#2-56	0.161"	0.058"	1	1/8	5/32	3/16	1/4	5/16	3/8	1/2	5/8			PAN HEAD
#4-40	0.212"	0.075"	1	1/8		3/16	1/4	5/16	3/8	1/2	5/8	3/4		PAN HEAD
#6-32	0.263"	0.092"	2		5/32	3/16	1/4	5/16	3/8	1/2	5/8	3/4	1	PAN HEAD
#8-32	0.314"	0.110"	2				1/4	5/16	3/8	1/2	5/8	3/4	1	PAN HEAD
#10-32	0.365"	0.128"	2				1/4	5/16	3/8	1/2	5/8	3/4	1	PAN HEAD
PART NO. (STANDARD SIZES)														
9001 SERIES : 01 =			1) 9001-a)-M3xP.0.50x6-FLAT MM (FOR EXAMPLE AS INQUIRY BY SUS304 SCREWS / JIS)											
ROUND TYPE HANDLE SCREWS			2) 9001-d)-#2-56x1/8"-PAN INCH (FOR EXAMPLE AS INQUIRY BY SUS304 SCREWS / IFI)											
			3) IF SOME SIZES ARE LACK FOR THE TIME BEING, PLS BE PATIENT TO SPEND MORE TIMES.											
			4) BEING ACCOMPANIED BY LATEST EUROPEAN RoHS STANDARD !											

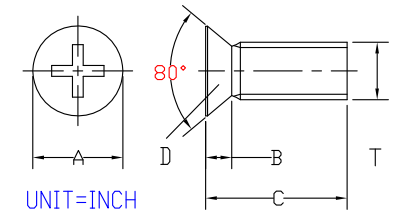
a) FLAT<JIS-JAPAN> SCREWS



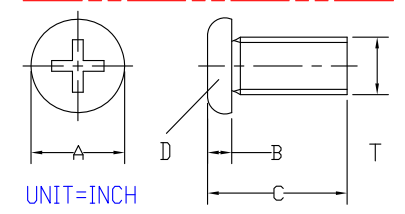
b) PAN<JIS-JAPAN> SCREWS



c) FLAT<IFI-U.S.A.> SCREWS



d) PAN<IFI-U.S.A.> SCREWS

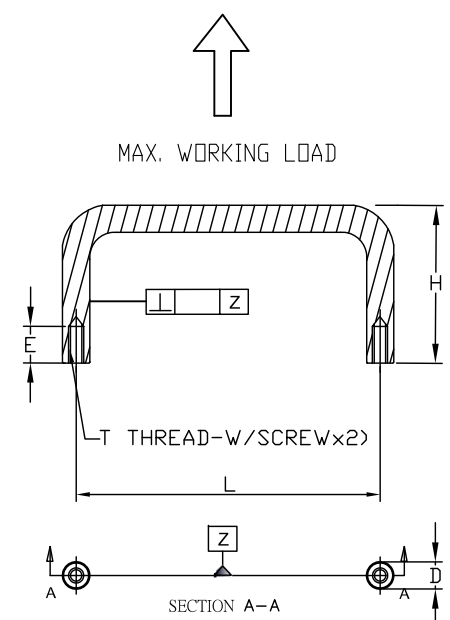


Tengscrew Co., Ltd. 鄧記有限公司		CLIENT'S FULL NAME			
PART NO. 9001 SERIES		Approval No.		Part No.	
NAME ROUND TYPE HANDLE SCREWS 螺絲		APPROVED Johnson			
TOL. ±		1 PLC	2 PLC	ANGLE	UNIT mm
MATERIAL SEE NOTE		SCALE 4:1		DRAWN Tonny	
FINISH SEE NOTE		DATE MAY-05-2014		REV. 0A	
THE 3RD PROJECTION		DWG. NO.		9001 SERIES 1/1	

PROPRIETARY NOTE: THIS SHEET OF ENGINEERING DRAWINGS AND SPECIFICATIONS CONTAINS CONFIDENTIAL, TRADE SECRET, AND OTHER PROPRIETARY INFORMATION OF TENGSCREW CO., LTD. THIS DOCUMENT MAY NOT BE TRANSFERRED OR COPIED WITHOUT THE EXPRESS WRITTEN AUTHORIZATION OF TENGSCREW. IN ADDITIONAL, NEITHER THIS SHEET NOR THE INFORMATION IT CONTAINS MAY BE USED BY OR DISCLOSED TO ANY THIRD PARTY WITHOUT TENGSCREW'S EXPRESS WRITTEN CONSENT.

UNIT : MM (釐米)
UNIT : INCH (英寸)

INQUIRY FOR ORDERS = PART NO.-DxLxH-T THREADxE (INCH/MM)						SUS304 FLAT (IFI) SCREWS		
PART NO. (STANDARD SIZES)	D DIAMETER	L LENGTH	H HEIGHT	T THREAD	E DEPTH	FLAT ANGLE : 80 DEGREES		
						DIAMETER	THICK	LENGTH
9001 SERIES : 01 = ROUND TYPE HANDLE ----- a) 9001-STNI (STEEL / NICKEL) (ST=SAE 1215MS CUTTING STEEL) (NI=BRIGHT NICKEL PLATED) b) 9001-ALNT (ALUMINUM/NATURAL) 9001-ALBA (ALUMINUM/BLACK) (AL=AISI 6063 ALUMINUM ALLOY) (NT=NATURAL<WHITE> ANODIZING) (BA=BLACK ANODIZING) c) 9001-SSPT (STAINLESS STEEL) (S.S.=AISI 303 STAINLESS STEEL) (PT=PASSIVATED IN SURFACE) d) 9001-STNI-1/8"x1"x3/4"-2-56x5/32" (FOR EXAMPLE FOR INQUIRY BY SAE 1215MS CUTTING STEEL + NICKEL-PLATED IN SURFACE.) e) BEING ACCOMPANIED BY LATEST EUROPEAN RoHS STANDARD !	1/8"	1"	1/2" 5/8" 3/4"	2-56	5/32"	0.160"	0.051"	3/16"
	5/32" 4.0 MM	1-1/4" 2" 3"	1"	4-40 M2xP.0.4	3/8"	0.210"	0.067"	5/32" (3/16")
	3/16" 5.0 MM	1-1/4" 1-1/2" 1-3/4" 2"	5/8" 3/4"	4-40 M3xP.0.5	5/32"			1/4" (5/16")
	3/16" 5.0 MM	1-1/4" 1-1/2" 2" 3"	1"	6-32 M3xP.0.5	1/4"	0.363"	0.116"	3/8"
	1/4" 6.3 MM	3" 3-1/2" 4" 4-1/2" 5" 5-1/2" 6"	1-1/2" 1-3/4"	6-32 8-32 M4xP.0.7	9/16"			
	5/16" 8.0 MM	3" 4" 4-1/2" 5" 5-1/2" 6"	1-1/2" 1-3/4"	10-32 M4xP.0.7 M5xP.0.8	9/16"	0.363"	0.116"	3/8"
	3/8" 9.5 MM	4" 5" 5-1/2" 6"	1-3/8"	10-32 M5xP.0.8 M6xP.1.0	3/8"			



REMARKS :

a) PERFORMANCE DETAILS FOR MAX. WORKING LOAD : 1500N (335LBF) (8-32THREAD BY AVE. VALUAED)

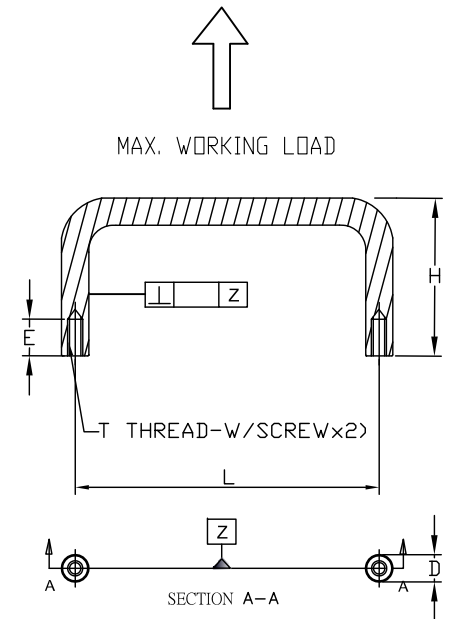
a) INSTALLATION NOTES FOR MAX. TIGHTENING TORQUE OF MOUNTING SCREWS : 1.7 N.M. (15 IN-LBF) (8-32THREAD BY AVE. VALUAED)

Tengscrew Co., Ltd. 鄧記有限公司		CLIENT'S FULL NAME	
PART NO.	9001 SERIES	Approval No.	Part No.
NAME	ROUND TYPE HANDEL 手動圓形把手	APPROVED	Johnson
TOL. ±	1 PLC 2 PLC ANGLE	DESIGNED	Tommy
MATERIAL	SEE NOTE	DRAWN	Tommy
FINISH	SEE NOTE	DATE	APR-23-2014
THE 3RD PROJECTION		REV.	0A
		DWG. NO.	9001 SERIES
			1/1

PROPRIETARY NOTE: THIS SHEET OF ENGINEERING DRAWINGS AND SPECIFICATIONS OF TENGSCREW CO., LTD. THIS DOCUMENT MAY NOT BE TRANSFERRED OR COPIED WITHOUT THE EXPRESS WRITTEN AUTHORIZATION OF TENGSCREW. IN ADDITIONAL, NEITHER THIS SHEET NOR THE INFORMATION IT CONTAINS MAY BE USED BY OR DISCLOSED TO ANY THIRD PARTY WITHOUT TENGSCREW'S EXPRESS WRITTEN CONSENT.

UNIT : INCH (英寸)
UNIT : MM (釐米)

INQUIRY FOR ORDERS = PART NO.-DxLxH-T THREADxE (MM/INCH)								
PART NO. (STANDARD SIZES)	D	L	H	T	E	SUS304 FLAT<JIS/IFI> SCREWS		
	DIAMETER	LENGTH	HEIGHT	THREAD	DEPTH	FLAT ANGLE:90/80 DEGREES		
						DIAMETER	THICK	LENGTH
9001 SERIES :		55						
01 = ROUND TYPE HANDLE		64						
a)		76	32	M4xP.0.7	8	7.75	2.30	10
9001-STNI (STEEL / NICKEL)		88						
9001-STCR (STEEL / CHROME)		100						
(ST=SAE 1215MS CUTTING STEEL)	8	100	35	M5xP.0.8	10	9.20	2.80	12
(ST=SAE 1008CHQ CARBON STEEL)		120						
(NI=BRIGHT NICKEL PLATED)		136						
(CR=BRIGHT CHROME PLATED)		88						
b)		100						
9001-ALNT (ALUMINUM/NATURAL)	10	120	40	M6xP.1.0	12	11.65	3.40	16
9001-ALBA (ALUMINUM/BLACK)		150						
(AL=AISI 6063 ALUMINUM ALLOY)		180						
(NT=NATURAL<WHITE> ANODIZING)								
(BA=BLACK ANODIZING)	5	30	25	M3xP.0.5	6	5.75	1.75	6, 8
c)	(SPECIAL SIZES)	33	19					
9001-SSPT (STAINLESS STEEL)		37	22					
(S.S.=AISI 304 STAINLESS STEEL)		XX						
(PT=PASSIVATED IN SURFACE)		XX						
d) PINK COLOR = SPECIAL SIZE.	6.0	28	23	6-32	6.5	0.262"	0.083"	1/4",5/16"
9001-STNI-6.3x55x32-M4xP.0.7x8	(SPECIAL SIZES)	XX	32	M4xP.0.7	8	7.75	2.30	10
(FOR EXAMPLE FOR INQUIRY BY		XX						
SAE 1215MS CUTTING STEEL +	8	76.2(3")	40	M4xP.0.7	11	7.75	2.30	10
NICKEL-PLATED IN SURFACE.)	8	96	32	8-32	9	0.314"	0.110"	3/8"
e)		XX	XX	M5xP.0.8	10	9.20	2.80	12
BEING ACCOMPANIED BY LATEST	9.5	76.2(3")	40	M4xP.0.7	11	7.75	2.30	12
EUROPEAN RoHS STANDARD !	(SPECIAL SIZES)	XX	XX	M6xP.1.0	12	11.65	3.40	16
		XX						



REMARKS :

a) PERFORMANCE DETAILS FOR MAX. WORKING LOAD : 1500N (335LBF) (M4 THREAD BY AVE. VALUAED)

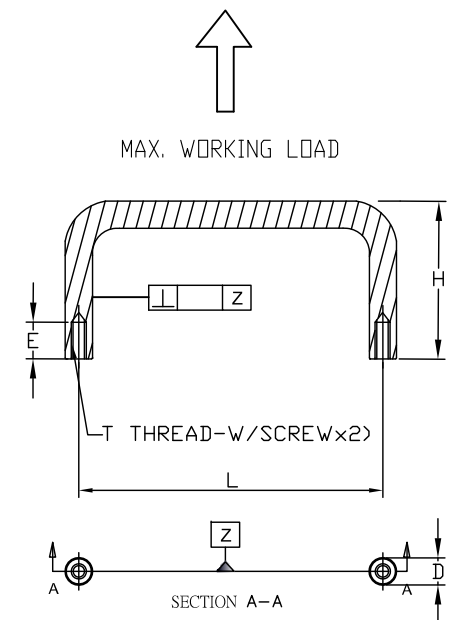
a) INSTALLATION NOTES FOR MAX. TIGHTENING TORQUE OF MOUNTING SCREWS : 1.7 N.M. (15 IN=LBF) (M4 THREAD BY AVE. VALUAED)

Tengscrew Co., Ltd. 鄧記有限公司		CLIENT'S FULL NAME	
PART NO.	9001 SERIES	Approval No.	Part No.
NAME	ROUND TYPE HANDEL 手動圓形把手	APPROVED	Johnson
TOL. ±	1 PLC 2 PLC ANGLE	DESIGNED	Tommy
MATERIAL	SEE NOTE	DRAWN	Tommy
FINISH	SEE NOTE	DATE	APR-23-2014
		REV.	0A
	THE 3RD PROJECTION	DWG. NO.	9001 SERIES
			1/1

PROPRIETARY NOTE: THIS SHEET OF ENGINEERING DRAWINGS AND SPECIFICATIONS CONTAINS CONFIDENTIAL, TRADE SECRET, AND OTHER PROPRIETARY INFORMATION OF TENGSCREW CO., LTD. THIS DOCUMENT MAY NOT BE TRANSFERRED OR COPIED WITHOUT THE EXPRESS WRITTEN AUTHORIZATION OF TENGSCREW. IN ADDITIONAL, NEITHER THIS SHEET NOR THE INFORMATION IT CONTAINS MAY BE USED BY OR DISCLOSED TO ANY THIRD PARTY WITHOUT TENGSCREW'S EXPRESS WRITTEN CONSENT.

UNIT : MM (釐米)
UNIT : INCH (英寸)

INQUIRY FOR ORDERS = PART NO.-DxLxH-T THREADxE (MM/INCH)				T	E	SUS304 FLAT<DIN/IFI> SCREWS			
PART NO. (STANDARD SIZES)	D DIAMETER	L LENGTH	H HEIGHT	THREAD	DEPTH	FLAT ANGLE:90/80 DEGREES			
						DIAMETER	THICK	LENGTH	
9001 SERIES : 01 = ROUND TYPE HANDLE	8		60	35	M5xP.0.8	12	7.75	2.30	12
			60	36	M5xP.0.8				
			70	36	M5xP.0.8				
			80	36	M5xP.0.8				
			88	43	M4xP.0.7				
		*	100	38	M5xP.0.8				
			100	43	M4xP.0.7				
			104	34	M4xP.0.7				
			120	43	M4xP.0.7				
			135	41	M5xP.0.8				
a) RED COLOR = STEEL ONLY. PINK COLOR = SPECIAL SIZE. 9001-STNI (STEEL / NICKEL) 9001-STCR (STEEL / CHROME) (ST=SAE 1215MS CUTTING STEEL) (ST=SAE 1008CHQ CARBON STEEL) (NI=BRIGHT NICKEL PLATED) (CR=BRIGHT CHROME PLATED)	10	*	88	43	M5xP.0.8	12	7.75	2.30	12
			90	50	M4xP.0.7				
			100	41	M6xP.1.0				
			100	43	M5xP.0.8				
			100	50	M4xP.0.7				
			110	43	M5xP.0.8				
			120	40	M6xP.1.0				
			120	43	M5xP.0.8				
			180	43	M5xP.0.8				
			200	43	M5xP.0.8				
b) BLUE COLOR = S.S. & STEEL. BLACK COLOR = S.S. ONLY. 9001-SSPT (STAINLESS STEEL) (S.S.=AISI 304 STAINLESS STEEL) (PT=PASSIVATED IN SURFACE)	10	*	235	43	M5xP.0.8	12	9.20	2.80	12
			120	51	M8xP.1.25				
			150	53	M8xP.1.25				
c) 9001-STNI-8x60x35-M5xP.0.8x12 (FOR EXAMPLE FOR INQUIRY BY SAE 1215MS CUTTING STEEL + NICKEL / CHROMIUM-PLATED.)	8	*	64	27	8-32	12	0.312"	0.100"	0.500"
			76	27					
			88	27					
d) BEING ACCOMPANIED BY LATEST EUROPEAN RoHS STANDARD !	10		96	27	8-32	12	0.312"	0.100"	0.500"
			128	36					
			160	36					
			224	36					



REMARKS :

a) PERFORMANCE DETAILS FOR MAX. WORKING LOAD : 1500N (335LBF) (M4 / 8-32 BY AVE. VALUAED)

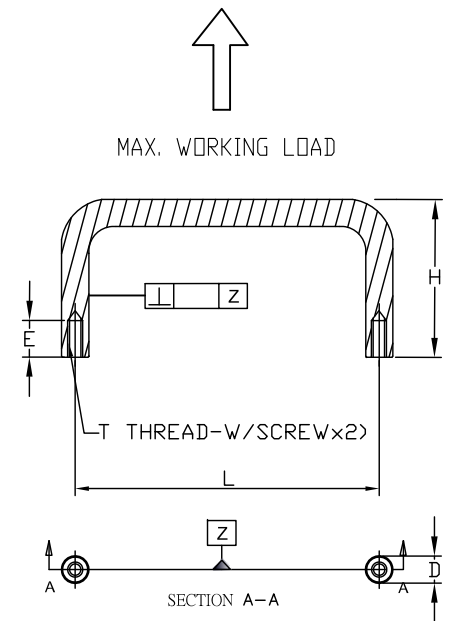
a) INSTALLATION NOTES FOR MAX. TIGHTENING TORQUE OF MOUNTING SCREWS : 1.7 N.M. (15 IN-LBF) (M4 / 8-32 BY AVE. VALUAED)

Tengscrew Co., Ltd. 鄧記有限公司		CLIENT'S FULL NAME	
PART NO. 9001 SERIES		Approval No.	Part No.
NAME	ROUND TYPE HANDEL 手動圓形把手	APPROVED	DESIGNED
TOL. ±	1 PLC 2 PLC ANGLE	UNIT	mm
MATERIAL	SEE NOTE	SCALE	4:1
FINISH	SEE NOTE	DATE	APR.-23-2014
THE 3RD PROJECTION		DWG. NO.	9001 SERIES
		REV.	0A
			1/1

PROPRIETARY NOTE: THIS SHEET OF ENGINEERING DRAWINGS AND SPECIFICATIONS OF TENGSCREW CO., LTD. THIS DOCUMENT MAY NOT BE TRANSFERRED OR COPIED WITHOUT THE EXPRESS WRITTEN AUTHORIZATION OF TENGSCREW. NEITHER THIS SHEET NOR THE INFORMATION IT CONTAINS MAY BE USED BY OR DISCLOSED TO ANY THIRD PARTY WITHOUT TENGSCREW'S EXPRESS WRITTEN CONSENT.

UNIT : MM (釐米)
UNIT : INCH (英吋)

INQUIRY FOR ORDERS = PART NO.-DxLxH-T THREADxE (INCH/MM)				T THREAD	E DEPTH	SUS304 PAN (F1) SCREWS		
PART NO. (STANDARD SIZES)	D DIAMETER	L LENGTH	H HEIGHT			A DIAMETER	B THICK	C LENGTH
	9001 SERIES : 01 = ROUND TYPE HANDLE ----- a) 9001-STNI (STEEL / NICKEL) (ST=SAE 1215MS CUTTING STEEL) (NI=BRIGHT NICKEL PLATED) b) 9001-ALNT (ALUMINUM/NATURAL) 9001-ALBA (ALUMINUM/BLACK) (AL=AISI 6063 ALUMINUM ALLOY) (NT=NATURAL<WHITE> ANODIZING) (BA=BLACK ANODIZING) c) 9001-SSPT (STAINLESS STEEL) (S.S.=AISI 303 STAINLESS STEEL) (PT=PASSIVATED IN SURFACE) d) 9001-STNI-1/8"x1"x3/4"-2-56x5/32" (FOR EXAMPLE FOR INQUIRY BY SAE 1215MS CUTTING STEEL + NICKEL-PLATED IN SURFACE.) e) BEING ACCOMPANIED BY LATEST EUROPEAN RoHS STANDARD !	1/8"	1"	1/2" 5/8" 3/4"	2-56	5/32"	0.161"	0.058"
5/32" 4.0 MM		1-1/4" 2" 3"	1"	4-40 M2xP.0.4	3/8"	0.212"	0.075"	5/32" (3/16") 1/4" (5/16") 3/8"
3/16" 5.0 MM		1-1/4" 1-1/2" 1-3/4" 2"	5/8" 3/4"	4-40 M3xP.0.5	5/32"			
3/16" 5.0 MM		1-1/4" 1-1/2" 2" 3"	1"	6-32 M3xP.0.5	1/4"	0.365"	0.128"	3/8" 5/8"
1/4" 6.3 MM		3" 4" 4-1/2" 5" 5-1/2" 6"	1-1/2" 1-3/4"	6-32 8-32 M4xP.0.7	9/16"			
5/16" 8.0 MM		3" 4" 4-1/2" 5" 5-1/2" 6"	1-1/2" 1-3/4"	10-32 M4xP.0.7 M5xP.0.8	9/16"	0.365"	0.128"	3/8" 5/8"
3/8" 9.5 MM		4" 5" 6"	1-3/8"	10-32 M5xP.0.8 M6xP.1.0	3/8"			



REMARKS :

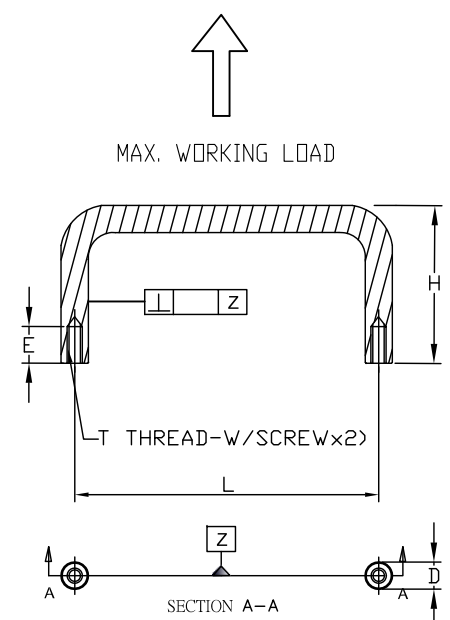
- a) PERFORMANCE DETAILS FOR MAX. WORKING LOAD : 1500N (335LBF) (8-32THREAD BY AVE. VALUAED)
- a) INSTALLATION NOTES FOR MAX. TIGHTENING TORQUE OF MOUNTING SCREWS : 1.7 N.M. (15 IN-LBF) (8-32THREAD BY AVE. VALUAED)

Tengscrew Co., Ltd. 鄧記有限公司				CLIENT'S FULL NAME			
PART NO. 9001 SERIES				Approval No.		Part No.	
NAME ROUND TYPE HANDLE 手動圓形把手				APPROVED Johnson			
TOL. ±				1 PLC 2 PLC ANGLE		UNIT mm	
MATERIAL SEE NOTE				SCALE 4:1		DRAWN Tommy	
FINISH SEE NOTE				DATE APR.-23-2014		REV. 0A	
THE 3RD PROJECTION				DWG. NO.		9001 SERIES 1/1	

PROPRIETARY NOTE: THIS SHEET OF ENGINEERING DRAWINGS AND SPECIFICATIONS OF TENGSCREW CO., LTD. THIS DOCUMENT MAY NOT BE TRANSFERRED OR COPIED WITHOUT THE EXPRESS WRITTEN AUTHORIZATION OF TENGSCREW. IN ADDITIONAL, NEITHER THIS SHEET NOR THE INFORMATION IT CONTAINS MAY BE USED BY OR DISCLOSED TO ANY THIRD PARTY WITHOUT TENGSCREW'S EXPRESS WRITTEN CONSENT.

UNIT : INCH (英寸)
UNIT : MM (釐米)

INQUIRY FOR ORDERS = PART NO.-DxLxH-T THREADxE (MM/INCH)								
PART NO. (STANDARD SIZES)	D	L	H	T	E	SUS304 PAN (JIS/IFI) SCREWS		
	DIAMETER	LENGTH	HEIGHT	THREAD	DEPTH	A	B	C
						DIAMETER	THICK	LENGTH
9001 SERIES :		55						
01 = ROUND TYPE HANDLE		64						
a)		76	32	M4xP.0.7	8	6.80	2.60	8
9001-STNI (STEEL / NICKEL)		88						
9001-STCR (STEEL / CHROME)		100						
(ST=SAE 1215MS CUTTING STEEL)	8	100	35	M5xP.0.8	10	8.70	3.30	10
(ST=SAE 1008CQ CARBON STEEL)		120						
(NI=BRIGHT NICKEL PLATED)		136						
(CR=BRIGHT CHROME PLATED)		88						
b)		100						
9001-ALNT (ALUMINUM/NATURAL)	10	120	40	M6xP.1.0	12	10.15	3.90	12
9001-ALBA (ALUMINUM/BLACK)		150						
(AL=AISI 6063 ALUMINUM ALLOY)		180						
(NT=NATURAL<WHITE> ANODIZING)								
(BA=BLACK ANODIZING)								
c)								
9001-SSPT (STAINLESS STEEL)		XX						
(S.S.=AISI 304 STAINLESS STEEL)		XX						
(PT=PASSIVATED IN SURFACE)		XX						
d) PINK COLOR = SPECIAL SIZE.	5	30	25	M3xP.0.5	6	5.25	2.00	6
9001-STNI-6.3x55x32-M4xP.0.7x8	(SPECIAL SIZES)	33	19					
(FOR EXAMPLE FOR INQUIRY BY		37	22					
SAE 1215MS CUTTING STEEL +		XX						
NICKEL-PLATED IN SURFACE.)		XX						
e)								
BEING ACCOMPANIED BY LATEST	6.0	28	23	6-32	6.5	0.263"	0.092"	1/4",5/16"
EUROPEAN RoHS STANDARD !	(SPECIAL SIZES)	XX	XX	M4xP.0.7	8	6.80	2.60	8
		XX						
	8	76.2(3")	40	M4xP.0.7	11	6.80	2.60	10
	8	96	32	8-32	9	0.314"	0.110"	3/8"
		XX	XX	M5xP.0.8	10	8.70	3.30	10
	9.5	76.2(3")	40	M4xP.0.7	11	6.80	2.60	10
	(SPECIAL SIZES)	XX	XX	M6xP.1.0	12	10.15	3.90	12
		XX						



REMARKS :

a) PERFORMANCE DETAILS FOR MAX. WORKING LOAD : 1500N (335LBF) (M4 THREAD BY AVE. VALUAED)

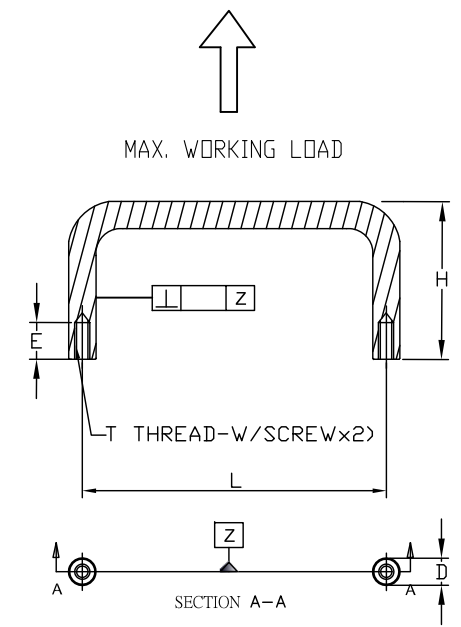
a) INSTALLATION NOTES FOR MAX. TIGHTENING TORQUE OF MOUNTING SCREWS : 1.7 N.M. (15 IN-LBF) (M4 THREAD BY AVE. VALUAED)

Tengscrew Co., Ltd. 鄧記有限公司		CLIENT'S FULL NAME	
PART NO.	9001 SERIES	Approval No.	Part No.
NAME	ROUND TYPE HANDEL 手動圓形把手	APPROVED	Johnson
TOL. ±	1 PLC 2 PLC ANGLE	DESIGNED	Tommy
MATERIAL	SEE NOTE	DRAWN	Tommy
FINISH	SEE NOTE	DATE	APR-23-2014
THE 3RD PROJECTION		REV.	0A
		DWG. NO.	9001 SERIES
			1/1

PROPRIETARY NOTE: THIS SHEET OF ENGINEERING DRAWINGS AND SPECIFICATIONS OF TENGSCREW CO., LTD. THIS DOCUMENT MAY NOT BE TRANSFERRED OR COPIED WITHOUT THE EXPRESS WRITTEN AUTHORIZATION OF TENGSCREW. NEITHER THIS SHEET NOR THE INFORMATION IT CONTAINS MAY BE USED BY CONTAINS CONFIDENTIAL, TRADE SECRET, AND OTHER PROPRIETARY INFORMATION. IN ADDITIONAL, OR DISCLOSED TO ANY THIRD PARTY WITHOUT TENGSCREW'S EXPRESS WRITTEN CONSENT.

UNIT : MM (釐米)
UNIT : INCH (英寸)

INQUIRY FOR ORDERS = PART NO.-DxLxH-T THREADxE (MM/INCH)				T	E	SUS304 PAN (JIS/IFI) SCREWS		
PART NO. (STANDARD SIZES)	D	L	H	THREAD	DEPTH	A	B	C
	DIAMETER	LENGTH	HEIGHT			DIAMETER	THICK	LENGTH
9001 SERIES : 01 = ROUND TYPE HANDLE	8	60	35	M5xP.0.8	12	6.80	2.60	12
		60	36	M5xP.0.8				
		70	36	M5xP.0.8				
		80	36	M5xP.0.8				
		88	43	M4xP.0.7				
		* 100	38	M5xP.0.8				
		100	43	M4xP.0.7				
		104	34	M4xP.0.7				
		120	43	M4xP.0.7				
		135	41	M5xP.0.8				
a) RED COLOR = STEEL ONLY, PINK COLOR = SPECIAL SIZE. 9001-STNI (STEEL / NICKEL) 9001-STCR (STEEL / CHROME) (ST=SAE 1215MS CUTTING STEEL) (ST=SAE 1008CHQ CARBON STEEL) (NI=BRIGHT NICKEL PLATED) (CR=BRIGHT CHROME PLATED)	10	88	43	M5xP.0.8	12	6.80	2.60	12
		90	50	M4xP.0.7				
		100	41	M6xP.1.0				
		100	43	M5xP.0.8				
		100	50	M4xP.0.7				
		110	43	M5xP.0.8				
		* 120	40	M6xP.1.0				
		120	43	M5xP.0.8				
		180	43	M5xP.0.8				
		200	43	M5xP.0.8				
b) BLUE COLOR = S.S. & STEEL, BLACK COLOR = S.S. ONLY. 9001-SSPT (STAINLESS STEEL) (S.S.=AISI 304 STAINLESS STEEL) (PT=PASSIVATED IN SURFACE)	8	64	27	8-32	12	0.314"	0.110"	0.500"
		76	27					
		* 88	27					
c) 9001-STNI-8x60x35-M5xP.0.8x12 (FOR EXAMPLE FOR INQUIRY BY SAE 1215MS CUTTING STEEL + NICKEL / CHROMIUM-PLATED.)	10	128	36	8-32	12	0.314"	0.110"	0.500"
		160	36					
		224	36					
d) BEING ACCOMPANIED BY LATEST EUROPEAN RoHS STANDARD !	8	88	27	8-32	12	0.314"	0.110"	0.500"
		96	27					



REMARKS :

a) PERFORMANCE DETAILS FOR MAX. WORKING LOAD : 1500N (335LBF) (M4 / 8-32 BY AVE. VALUAED)

a) INSTALLATION NOTES FOR MAX. TIGHTENING TORQUE OF MOUNTING SCREWS : 1.7 N.M. (15 IN-LBF) (M4 / 8-32 BY AVE. VALUAED)

Tengscrew Co., Ltd. 鄧記有限公司				CLIENT'S FULL NAME			
PART NO. 9001 SERIES				Approval No.		Part No.	
NAME ROUND TYPE HANDLE 手動圓形把手				APPROVED Johnson			
TOL. ±				DESIGNED Tommy		DRAWN Tommy	
MATERIAL SEE NOTE				DATE APR-23-2014 REV. 0A			
FINISH SEE NOTE				DWG. NO. 9001 SERIES 1/1			
THE 3RD PROJECTION							

PROPRIETARY NOTE: THIS SHEET OF ENGINEERING DRAWINGS AND SPECIFICATIONS OF TENGSCREW CO., LTD. THIS DOCUMENT MAY NOT BE TRANSFERRED OR COPIED WITHOUT THE EXPRESS WRITTEN AUTHORIZATION OF TENGSCREW. NEITHER THIS SHEET NOR THE INFORMATION IT CONTAINS MAY BE USED BY ANY OTHER PARTY WITHOUT TENGSCREW'S EXPRESS WRITTEN CONSENT.

UNIT : MM (釐米)
UNIT : INCH (英吋)