

Note : For Installation Near MAX Panel Thickness, Deburr Hole

Panel Preparation and Installation

(1) SCREW (HARDENED + PASSIVATED)
 PART NUMBER (P/N.) : TENG000043A
 DESCRIPTION (DESC.) : 92-10-494-10-407
 SPECIFICATION (SPEC.) : 8.50x19.00-A
 MATERIAL : AISI 410 STAINLESS STEEL

(4) FERRULE (NATURAL PLAIN IN SURFACE)
 PART NUMBER (P/N.) : TENG000043D
 DESCRIPTION (DESC.) : 92-10-494-10-407
 SPECIFICATION (SPEC.) : 10.40x10.65-D
 MATERIAL : AISI 6061 ALUMINIUM

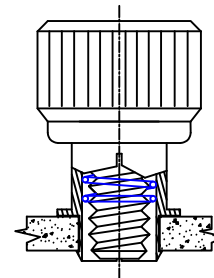
(2) KNOB (NATURAL < WHITE > ANODIZING)
 PART NUMBER (P/N.) : TENG000043B
 DESCRIPTION (DESC.) : 92-10-494-10-407
 SPECIFICATION (SPEC.) : 13.00x10.20-B
 MATERIAL : AISI 6061 ALUMINIUM

(5) REMARKS :
 a) PULLOUT FORCE = 290N (65LBS/29.50KGF).
 SIDE LOAD AGAINST UNFASTENED KNOB = 180N (40LBS/18.18KGF).
 b) TORSIONAL STRENGTH : 35.00 KGF-CM FOR SCREW'S MINI. VALUED.

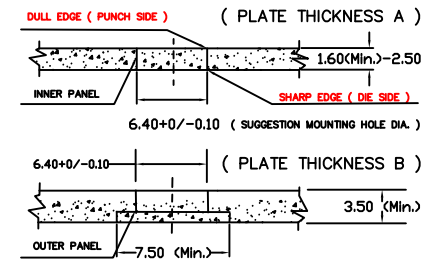
(3) SPRING (PASSIVATED IN SURFACE)
 PART NUMBER (P/N.) : TENG000034C
 DESCRIPTION (DESC.) : 92-10-494-10-407
 SPECIFICATION (SPEC.) : 0.35x6.60x14.50-C
 MATERIAL : AISI 304 STAINLESS STEEL

c) SUGGESTION HOLE DIA. = 6.40 - 6.30 MM
 THICKNESS OF STEEL PLATE = 2.00 MM.
 (BEING SUITABLE TO LATEST EUROPEAN RoHS STANDARD IN 2,014 YEAR !)

SMOOTH ↓ PUNCH



SURFACE PARALLEL FOR DIE / ANVIL



鄧 記 有 限 公 司 Tengscrew Co., Ltd.		CLIENT'S FULL NAME	
		Approval No.	Part No.
NAME	Snap-In-Style-M4xP.0.70x19.00 MM		APPROVED Johnson
TOL. ±	1 PLC	2 PLC	ANGLE
	UNIT	mm	DESIGNED Tommy
MATERIAL	SEE NOTE		SCALE
	4:1	DRAWN Tommy	
FINISH	SEE NOTE		DATE
	JUNE-26-2014	REV.	1A
THE 3RD PROJECTION		DWG. AND PART NO.	TENG000043 1/1

PROPRIETARY NOTE: THIS SHEET OF ENGINEERING DRAWINGS AND SPECIFICATIONS CONTAINS CONFIDENTIAL, TRADE SECRET, AND OTHER PROPRIETARY INFORMATION OF TENGSCREW CO., LTD. THIS DOCUMENT MAY NOT BE TRANSFERRED OR COPIED WITHOUT THE EXPRESS WRITTEN AUTHORIZATION OF TENGSCREW. IN ADDITIONAL, NEITHER THIS SHEET NOR THE INFORMATION IT CONTAINS MAY BE USED BY OR DISCLOSED TO ANY THIRD PARTY WITHOUT TENGSCREW'S EXPRESS WRITTEN CONSENT.