

UNIT		MM		P/N=LAS/LAC-508-2-ZI		REVISIONS	
LTR	DESCRIPTION	DATE	APP.				

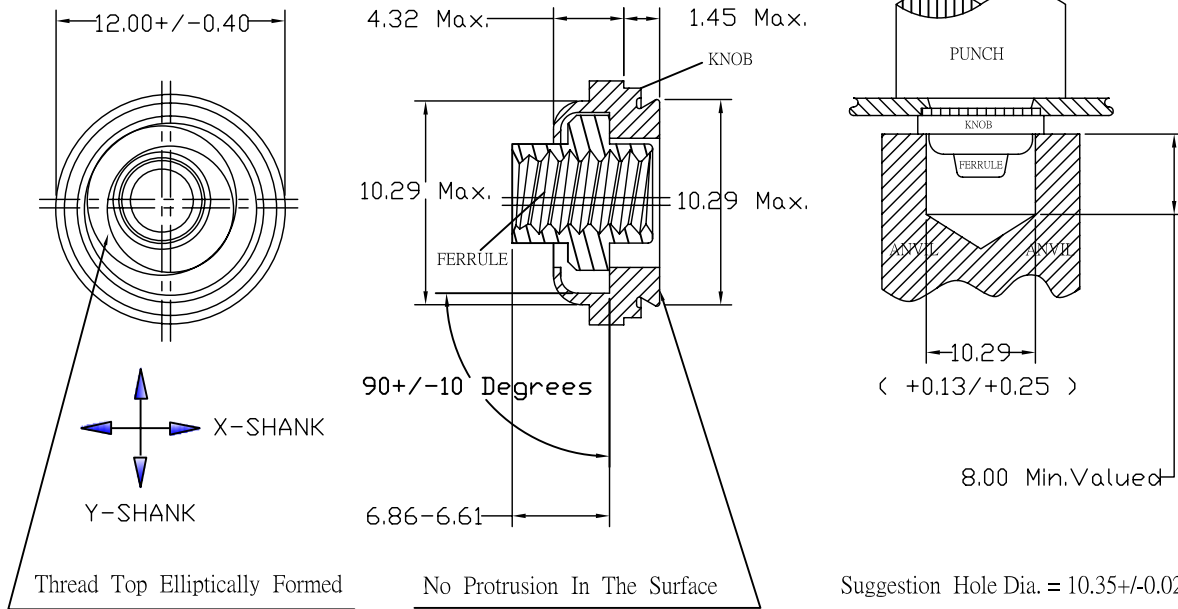
FLOATING SELF-CLINCHING FASTENERS

Total Lateral Float Of Ferrule
In Knob 0.76 Min. Valued By
X & Y Direction

Panel Preparation And Installation

NOTE :

Specification : Dia. 12.00 x Width 5.50 MM
 Knob M'tl: SAE1215MS Free Cutting Steel
 Ferrule M'tl: AISI 303 Stainless Steel
 Thread: Self-locking Internal M5xP.0.8-6H
 Finish : Zinc Cr3+ / Clear In Surface
 Installation Force : 1,612 kgf (Ave.)
 Pushout Force : 207 kgf (Ave.)
 Retainer-Torque-out: 226 kgf-cm (Ave.)
 Sheet Hardness : 70 or Less On The
 Rockwell " B " Scale.
 (For HRB 70 (Max.) Or Less Cold-Rolled
 Rolled-Steel Used.)
 Suggestion Hole Dia. : 10.35 +/-0.02 MM
 Min. Dist. Hole C/L To Edge : 9.14 MM
 Thickness Of Steel-Plate: 1.60 +/-0.02 MM
 Being Accompanied By European RoHS
 Latest Standard In 2,011 Year.



SELF-LOCKING TYPE LAS (KNOB) + LAC (FERRULE)

Tengscrew Co., Ltd.					MODEL
NAME	Floating-Self-Clinching-Fasteners-Series				APPROVED Johnson
TOL. ±	1 PLC	2 PLC	ANGLE	UNIT	DESIGNED Tommy
MATERIAL	SEE NOTE			SCALE	DRAWN Tommy
FINISH	SEE NOTE			DATE	REV. 0A
THE 3RD PROJECTION				DWG. NO.	LAS/LAC-508-2-ZI 1/1

PROPRIETARY NOTE: THIS SHEET OF ENGINEERING DRAWINGS AND SPECIFICATIONS OF TENGSCREW CO., LTD. THIS DOCUMENT MAY NOT BE TRANSFERRED OR COPIED OR NEITHER THIS SHEET NOR THE INFORMATION IT CONTAINS MAY BE USED BY CONTAINS CONFIDENTIAL, TRADE SECRET, AND OTHER PROPRIETARY INFORMATION WITHOUT THE EXPRESS WRITTEN AUTHORIZATION OF TENGSCREW. IN ADDITIONAL, OR DISCLOSED TO ANY THIRD PARTY WITHOUT TENGSCREW'S EXPRESS WRITTEN CONSENT.

UNIT		MM		TENGSCREW CO., LTD.		REVISIONS			
						LTR	DESCRIPTION	DATE	APP.

1

1

2

2

3

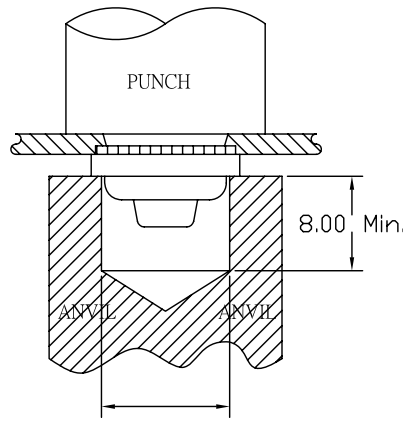
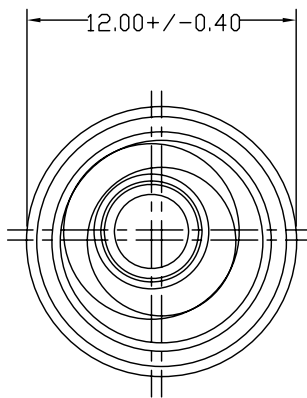
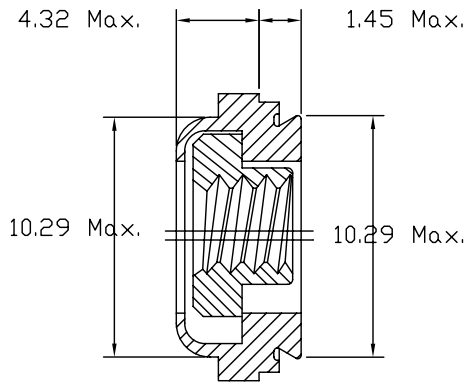
3

4

4

5

5



10.29+0.13/+0.25

Suggestion Hole Dia. = 10.35 ± 0.01 mm

Clearance Hole = 10.29 + 0.13 / + 0.25 mm

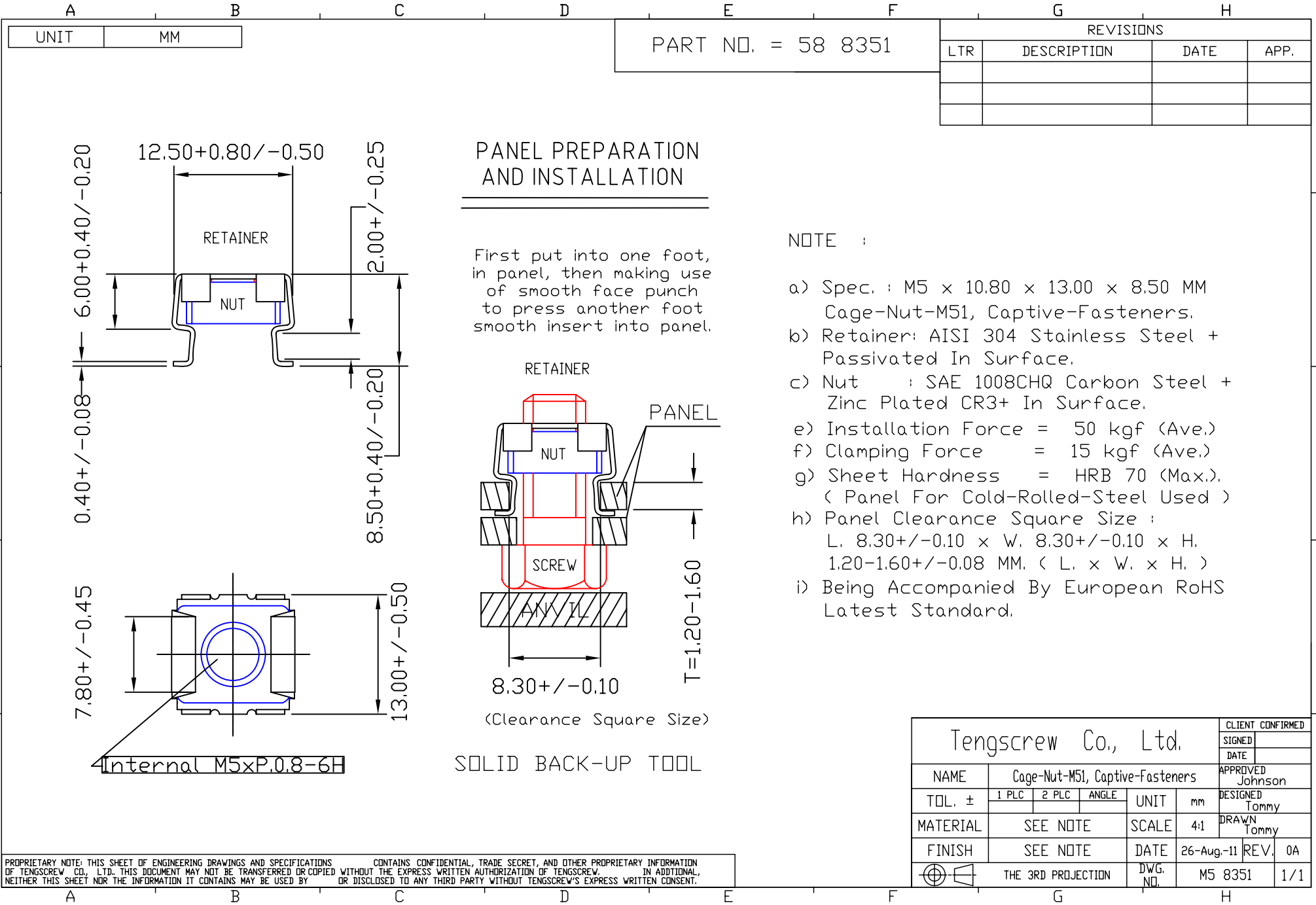
NOTE :

Specification : 12.00 x 5.50 MM
 Knob & Ferrule M'tl: AISI 12L14 Steel
 Thread: Non-locking Internal M5xP.0.8-6H
 Finish : Zinc/Clear In Surface
 Installation Force : 1,612 kgf (Ave.)
 Pushout Force : 207 kgf (Ave.)
 Retainer-Torque-out: 226 kgf-cm (Ave.)
 Sheet Hardness : 70 or Less On The Rockwell " B " Scale.
 (For HRB 60 (Max.) Or Less Cold-Rolled Rolled-Steel Used.)
 Min. Dist. Hole C/L To Edge : 9.14 MM
 Thickness Of Steel-Plate: 1.60 +/- 0.02 MM
 Being Accompanied By European RoHS Standard By The SGS Standard.

Tengscrew Co., Ltd.						MODEL	
						APPROVED Johnson	
						DESIGNED Tommy	
						DRAWN Daphne	
RANGE	TOLERANCE	NAME	Floating-Nut-Non-Locking-Series			UNIT	mm
0-10	X	TOL. ±	1 PLC	2 PLC	ANGLE		
10-50	X	MATERIAL	SEE NOTE			SCALE	4:1
50-100	X	FINISH	SEE NOTE			DATE	15-Jan-08
100-	X		THE 3RD PROJECTION			DWG. NO.	94SASFN5.50B50816
						REV.	OB
							1/1

PROPRIETARY NOTE: THIS SHEET OF ENGINEERING DRAWINGS AND SPECIFICATIONS CONTAINS CONFIDENTIAL, TRADE SECRET, AND OTHER PROPRIETARY INFORMATION OF TENGSCREW CO., LTD. THIS DOCUMENT MAY NOT BE TRANSFERRED OR COPIED WITHOUT THE EXPRESS WRITTEN AUTHORIZATION OF TENGSCREW. IN ADDITIONAL, NEITHER THIS SHEET NOR THE INFORMATION IT CONTAINS MAY BE USED BY OR DISCLOSED TO ANY THIRD PARTY WITHOUT TENGSCREW'S EXPRESS WRITTEN CONSENT.

A	B	C	D	E	F	G	H
---	---	---	---	---	---	---	---



PART NO. = 58 8351

REVISIONS			
LTR	DESCRIPTION	DATE	APP.

PANEL PREPARATION AND INSTALLATION

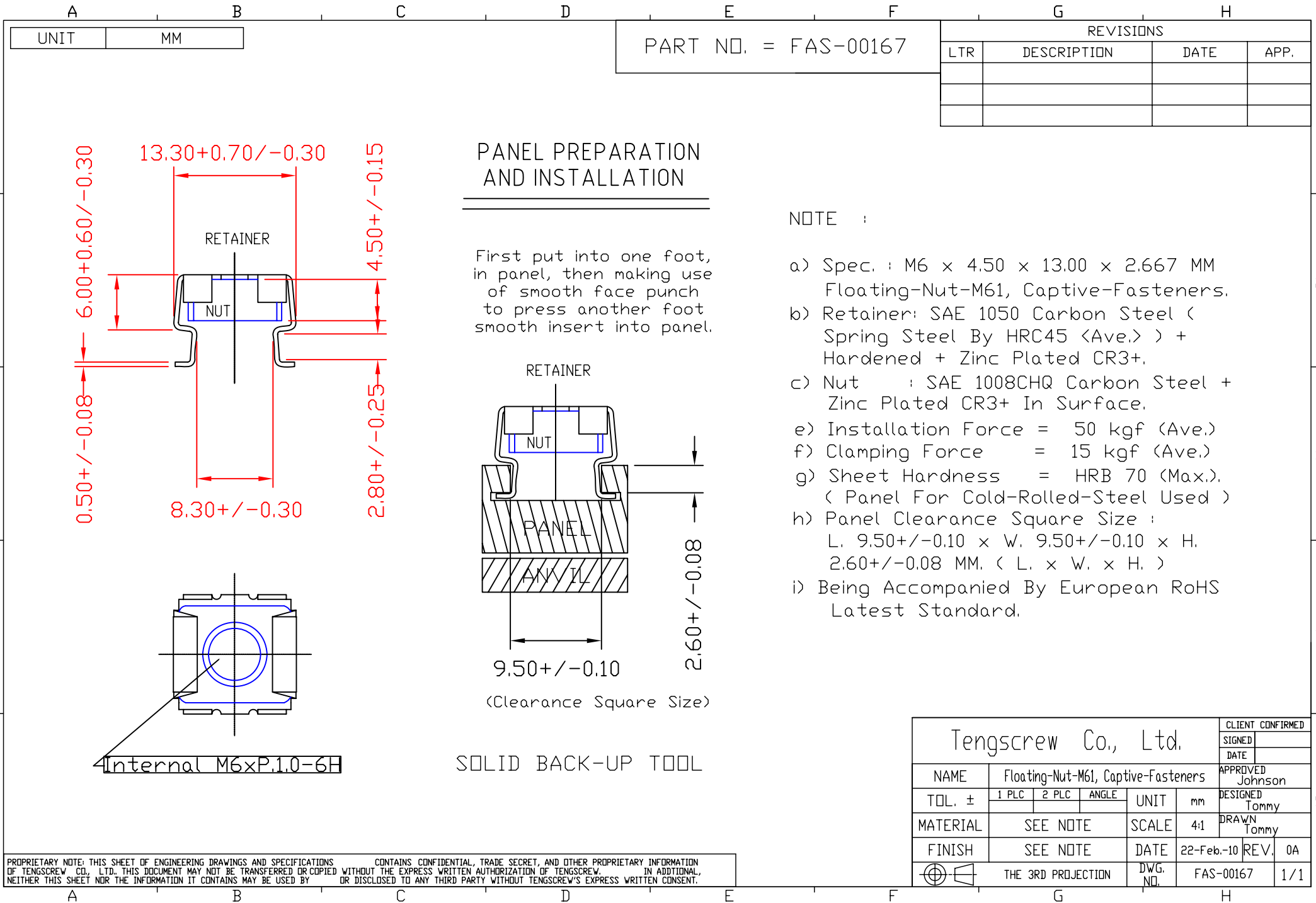
First put into one foot, in panel, then making use of smooth face punch to press another foot smooth insert into panel.

NOTE :

- a) Spec. : M5 x 10.80 x 13.00 x 8.50 MM Cage-Nut-M51, Captive-Fasteners.
- b) Retainer: AISI 304 Stainless Steel + Passivated In Surface.
- c) Nut : SAE 1008CHQ Carbon Steel + Zinc Plated CR3+ In Surface.
- e) Installation Force = 50 kgf (Ave.)
- f) Clamping Force = 15 kgf (Ave.)
- g) Sheet Hardness = HRB 70 (Max.) (Panel For Cold-Rolled-Steel Used)
- h) Panel Clearance Square Size : L. 8.30±/-0.10 x W. 8.30±/-0.10 x H. 1.20-1.60±/-0.08 MM. (L. x W. x H.)
- i) Being Accompanied By European RoHS Latest Standard.

Tengscrew Co., Ltd.					CLIENT CONFIRMED					
					SIGNED					
					DATE					
NAME					Cage-Nut-M51, Captive-Fasteners					
TOL. ±					1 PLC	2 PLC	ANGLE	UNIT	mm	APPROVED Johnson
MATERIAL					SEE NOTE		SCALE	4:1		DESIGNED Tommy
FINISH					SEE NOTE		DATE	26-Aug-11	REV.	0A
THE 3RD PROJECTION					DWG. NO.		M5 8351	1/1		

PROPRIETARY NOTE: THIS SHEET OF ENGINEERING DRAWINGS AND SPECIFICATIONS OF TENGSCREW CO., LTD. THIS DOCUMENT MAY NOT BE TRANSFERRED OR COPIED WITHOUT THE EXPRESS WRITTEN AUTHORIZATION OF TENGSCREW. NEITHER THIS SHEET NOR THE INFORMATION IT CONTAINS MAY BE USED BY OR DISCLOSED TO ANY THIRD PARTY WITHOUT TENGSCREW'S EXPRESS WRITTEN CONSENT.



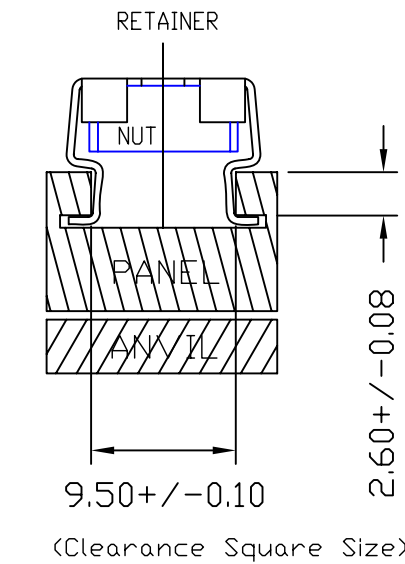
PART NO. = FAS-00167

REVISIONS			
LTR	DESCRIPTION	DATE	APP.

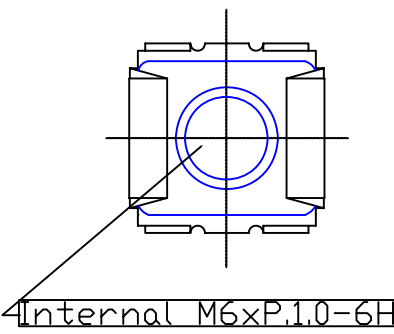
PANEL PREPARATION AND INSTALLATION

First put into one foot, in panel, then making use of smooth face punch to press another foot smooth insert into panel.

- NOTE :
- a) Spec. : M6 x 4.50 x 13.00 x 2.667 MM Floating-Nut-M61, Captive-Fasteners.
 - b) Retainer: SAE 1050 Carbon Steel (Spring Steel By HRC45 (Ave.)) + Hardened + Zinc Plated CR3+.
 - c) Nut : SAE 1008CHQ Carbon Steel + Zinc Plated CR3+ In Surface.
 - e) Installation Force = 50 kgf (Ave.)
 - f) Clamping Force = 15 kgf (Ave.)
 - g) Sheet Hardness = HRB 70 (Max.). (Panel For Cold-Rolled-Steel Used)
 - h) Panel Clearance Square Size : L. 9.50+/-0.10 x W. 9.50+/-0.10 x H. 2.60+/-0.08 MM. (L. x W. x H.)
 - i) Being Accompanied By European RoHS Latest Standard.



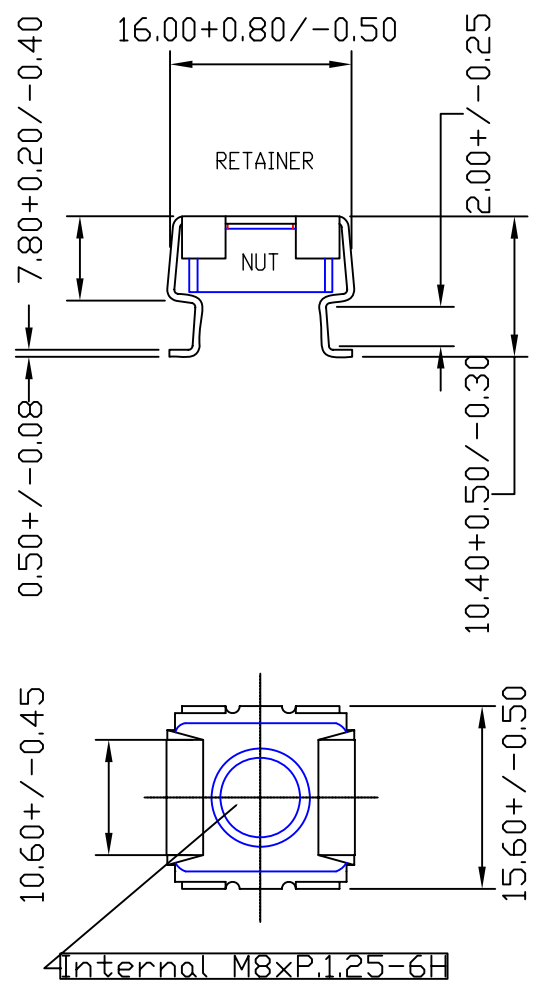
SOLID BACK-UP TOOL



PROPRIETARY NOTE: THIS SHEET OF ENGINEERING DRAWINGS AND SPECIFICATIONS CONTAINS CONFIDENTIAL, TRADE SECRET, AND OTHER PROPRIETARY INFORMATION OF TENGSCREW CO., LTD. THIS DOCUMENT MAY NOT BE TRANSFERRED OR COPIED WITHOUT THE EXPRESS WRITTEN AUTHORIZATION OF TENGSCREW CO., LTD. IN ADDITION, NEITHER THIS SHEET NOR THE INFORMATION IT CONTAINS MAY BE USED BY ANY OTHER PERSON OR DISCLOSED TO ANY THIRD PARTY WITHOUT TENGSCREW'S EXPRESS WRITTEN CONSENT.

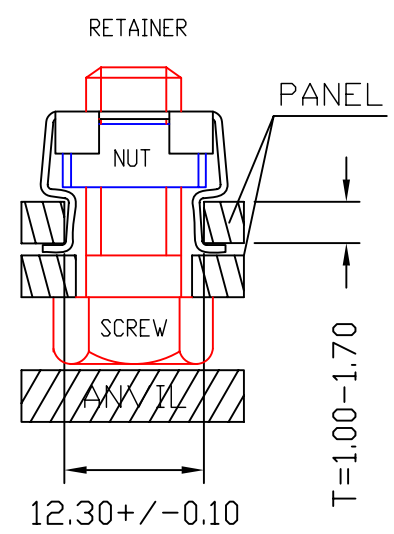
Tengscrew Co., Ltd.					CLIENT CONFIRMED	
					SIGNED	
NAME Floating-Nut-M61, Captive-Fasteners					DATE	
					APPROVED Johnson	
TOL. ±	1 PLC	2 PLC	ANGLE	UNIT	mm	DESIGNED Tommy
	MATERIAL SEE NOTE			SCALE	4:1	DRAWN Tommy
FINISH	SEE NOTE		DATE	22-Feb.-10	REV.	0A
THE 3RD PROJECTION			DWG. NO.	FAS-00167	1/1	

	A	B	C	D	E	F	G	H
UNIT	MM		PART NO. = M8 12381			REVISIONS		
LTR	DESCRIPTION	DATE	APP.					



PANEL PREPARATION AND INSTALLATION

First put into one foot, in panel, then making use of smooth face punch to press another foot smooth insert into panel.



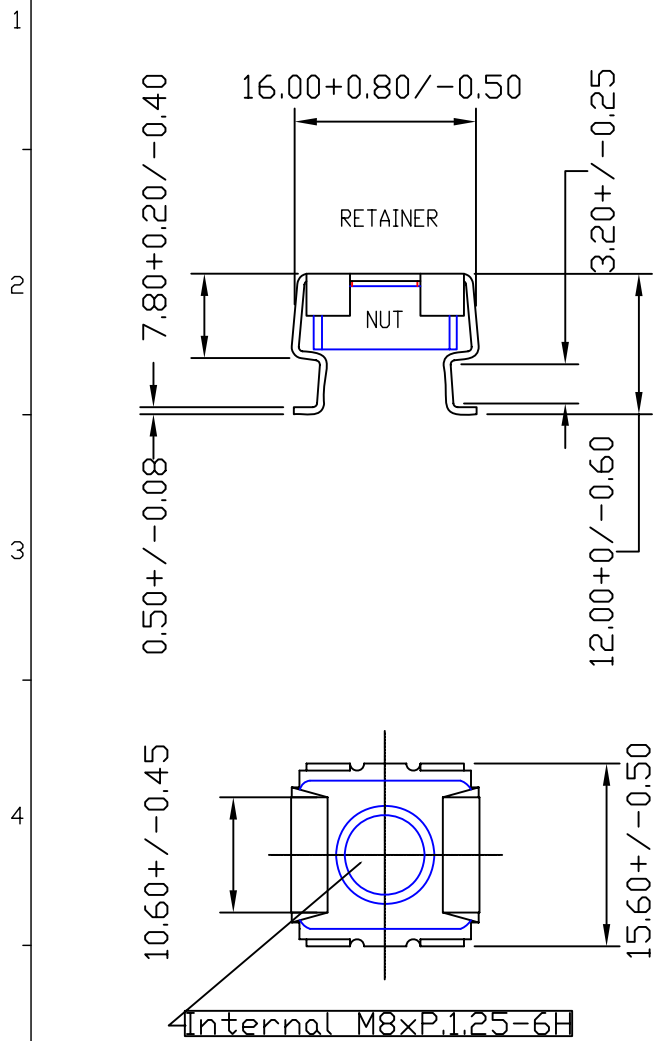
SOLID BACK-UP TOOL

NOTE :

- a) Spec. : M8 x 14.00 x 16.00 x 10.40 MM Cage-Nut-M81, Captive-Fasteners.
- b) Retainer: AISI 304 Stainless Steel + Passivated In Surface.
- c) Nut : SAE 1008CHQ Carbon Steel + Zinc Plated CR3+ In Surface.
- e) Installation Force = 50 kgf (Ave.)
- f) Clamping Force = 15 kgf (Ave.)
- g) Sheet Hardness = HRB 70 (Max.), (Panel For Cold-Rolled-Steel Used)
- h) Panel Clearance Square Size : L. $12.30 + / -0.10$ x W. $12.30 + / -0.10$ x H. $1.00 - 1.70 + / -0.08$ MM. (L. x W. x H.)
- i) Being Accompanied By European RoHS Latest Standard.

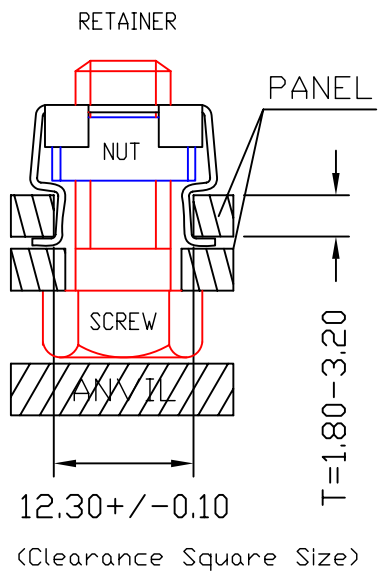
Tengscrew Co., Ltd.					CLIENT CONFIRMED	
					SIGNED	
					DATE	
NAME	Cage-Nut-M81, Captive-Fasteners				APPROVED Johnson	
TOL. ±	1 PLC	2 PLC	ANGLE	UNIT	mm	DESIGNED Tommy
MATERIAL	SEE NOTE			SCALE	4:1	DRAWN Tommy
FINISH	SEE NOTE			DATE	25-Aug-11	REV. 0A
THE 3RD PROJECTION				DWG. NO.	M8 12381	1/1

PROPRIETARY NOTE: THIS SHEET OF ENGINEERING DRAWINGS AND SPECIFICATIONS OF TENGSCREW CO., LTD. THIS DOCUMENT MAY NOT BE TRANSFERRED OR COPIED WITHOUT THE EXPRESS WRITTEN AUTHORIZATION OF TENGSCREW. IN ADDITIONAL, NEITHER THIS SHEET NOR THE INFORMATION IT CONTAINS MAY BE USED BY OR DISCLOSED TO ANY THIRD PARTY WITHOUT TENGSCREW'S EXPRESS WRITTEN CONSENT.



PANEL PREPARATION AND INSTALLATION

First put into one foot, in panel, then making use of smooth face punch to press another foot smooth insert into panel.



SOLID BACK-UP TOOL

NOTE :

- a) Spec. : M8 x 14.00 x 16.00 x 12.00 MM Cage-Nut-M82, Captive-Fasteners.
- b) Retainer: AISI 304 Stainless Steel + Passivated In Surface.
- c) Nut : SAE 1008CHQ Carbon Steel + Zinc Plated CR3+ In Surface.
- e) Installation Force = 50 kgf (Ave.)
- f) Clamping Force = 15 kgf (Ave.)
- g) Sheet Hardness = HRB 70 (Max.). (Panel For Cold-Rolled-Steel Used)
- h) Panel Clearance Square Size : L. 12.30 ± 0.10 x W. 12.30 ± 0.10 x H. $1.80 - 3.20 \pm 0.08$ MM. (L. x W. x H.)
- i) Being Accompanied By European RoHS Latest Standard.

Tengscrew Co., Ltd.						CLIENT CONFIRMED	
						SIGNED	
						DATE	
NAME Cage-Nut-M82, Captive-Fasteners				APPROVED		Johnson	
TOL. ±		1 PLC 2 PLC ANGLE		UNIT mm		DESIGNED	
						Tommy	
MATERIAL SEE NOTE			SCALE 4:1		DRAWN		
					Tommy		
FINISH SEE NOTE			DATE 25-Aug-11		REV.		0A
THE 3RD PROJECTION			DWG. NO.		M8 12382		1/1

PROPRIETARY NOTE: THIS SHEET OF ENGINEERING DRAWINGS AND SPECIFICATIONS OF TENGSCREW CO., LTD. THIS DOCUMENT MAY NOT BE TRANSFERRED OR COPIED WITHOUT THE EXPRESS WRITTEN AUTHORIZATION OF TENGSCREW. IN ADDITIONAL, NEITHER THIS SHEET NOR THE INFORMATION IT CONTAINS MAY BE USED BY OR DISCLOSED TO ANY THIRD PARTY WITHOUT TENGSCREW'S EXPRESS WRITTEN CONSENT.