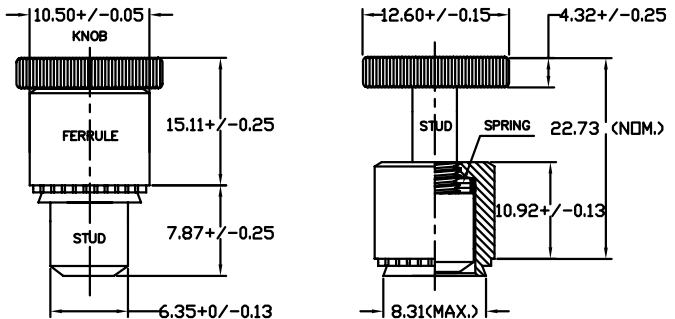
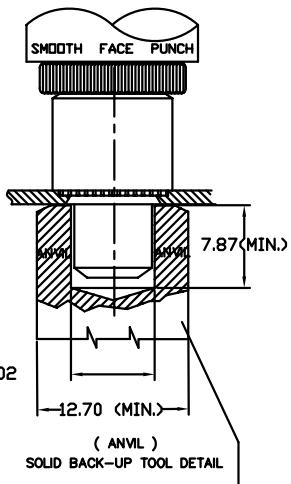


1
2
3
4
5

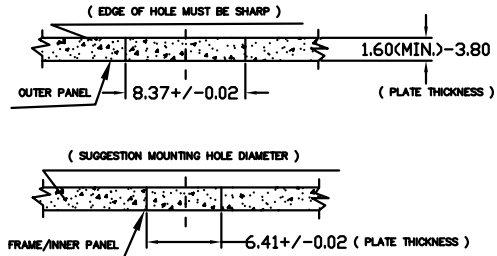


WITH PUNCH & TOOL SURFACE PARALLEL



NOTE :

- a) Spec: 12.60 x 23.20 MM, With Knurled, With Nickel Plated In Surface.
- b) Knob: AISI 12L14 Steel, 12.60 x 4.32 MM for Cylinder Head+Nickel Plated.
- c) Spring: 304 Stainless Steel, Passivated.
- d) Ferrule: AISI 12L14 Steel, 10.50x12.30 MM, Hardened + Nickel Plated.
- e) Stud: AISI 12L14 Steel+Nickel Plated, 6.32 x 21.80 MM.
- f) Pushout Force : 158.08 kgf (Ave.) (See Attached Mechanical Properties Test Report No. 9408012 Issued Date 2005/08/01 By Tengscrew Co., Ltd.)
- g) Sheet Hardness : 150 HV or Less (For Cold-Rolled-Steel Used)
- h) Thickness Of Steel-Plate : 1.60 MM
- i) Suggestion Hole Dia. = 8.37+/-0.02 MM & Installation Force= 1,508 Kgf (Ave.)
- j) Min. Dist. Hole C/L To Edge : 8.64 MM



Tengscrew Co., Ltd.							MODEL	
							APPROVED Johnson	
							DESIGNED Johnson	
							DRAWN Daphne	
							REV. 0A	
							NO. 94TS2298B81016	
							1/1	

RANGE	TOLERANCE	NAME	Spring Loaded Plungers			UNIT	mm
			1 PLC	2 PLC	ANGLE		
0-10	X	TOL. ±					
10-50	X	MATERIAL	SEE NOTE			SCALE	2:1
50-100	X	FINISH	SEE NOTE			DATE	10-AUG-05
100-UP	X		THE 3RD PROJECTION			DWG. NO.	94TS2298B81016

PROPRIETARY NOTE: THIS SHEET OF ENGINEERING DRAWINGS AND SPECIFICATIONS CONTAINS CONFIDENTIAL, TRADE SECRET, AND OTHER PROPRIETARY INFORMATION OF TENGSREW CO., LTD. THIS DOCUMENT MAY NOT BE TRANSFERRED OR COPIED WITHOUT THE EXPRESS WRITTEN AUTHORIZATION OF TENGSREW CO., LTD. IN ADDITION, NEITHER THIS SHEET NOR THE INFORMATION IT CONTAINS MAY BE USED BY OR DISCLOSED TO ANY THIRD PARTY WITHOUT TENGSREW'S EXPRESS WRITTEN CONSENT.

