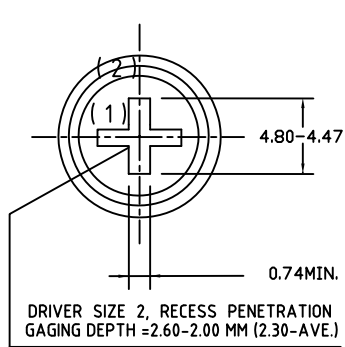


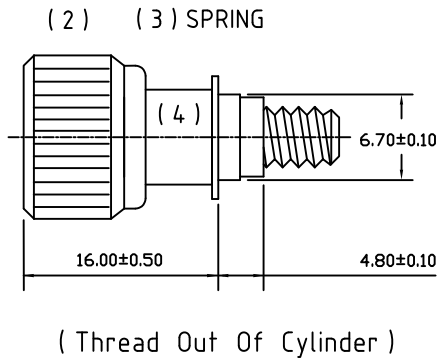
UNIT		MM		same southco's standard		DWG. & P/N = TENG000034		REVISIONS			
LTR	DESCRIPTION	DATE	APP.								

1

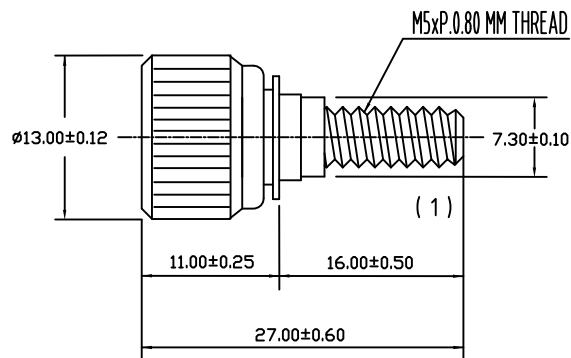
1



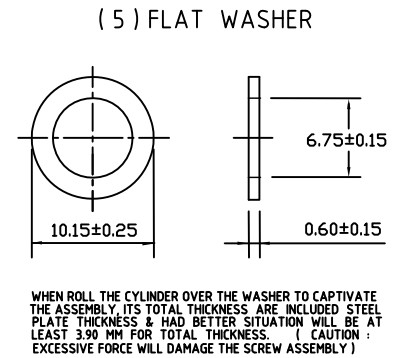
NO. 2 PHILLIPS



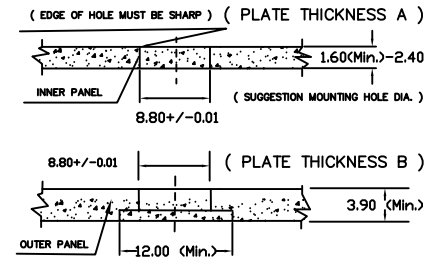
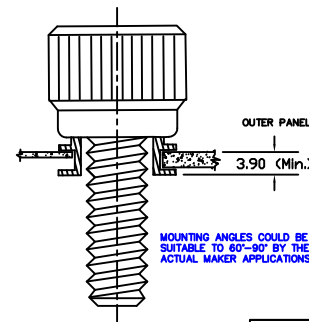
UN-FASTENED



FASTENED



### Panel Preparation and Installation



(1) SCREW ( HARDENED + PASSIVATED )  
 PART NUMBER ( P/N. ) : TENG000034A  
 DESCRIPTION ( DESC. ) : 92-92-632-10-508  
 SPECIFICATION ( SPEC. ) : 8.50x27.00-A  
 MATERIAL : AISI 410 STAINLESS STEEL  
 TORSIONAL STRENGTH : 86.00 KGF-CM  
 FOR SCREW'S MAX. VALUED.

(4) CYLINDER ( NATURAL PLAIN IN SURFACE )  
 PART NUMBER ( P/N. ) : TENG000034D  
 DESCRIPTION ( DESC. ) : 92-92-632-10-508  
 SPECIFICATION ( SPEC. ) : 10.40x11.90-D  
 MATERIAL : AISI 6061 ALUMINUM

(2) KNOB ( NATURAL <WHITE> ANODIZING )  
 PART NUMBER ( P/N. ) : TENG000034B  
 DESCRIPTION ( DESC. ) : 92-92-632-10-508  
 SPECIFICATION ( SPEC. ) : 13.00x10.20-B  
 MATERIAL : AISI 6061 ALUMINUM

(5) FLAT WASHER ( PASSIVATE IN SURFACE )  
 PART NUMBER ( P/N. ) : TENG000034E  
 DESCRIPTION ( DESC. ) : 92-92-632-10-508  
 SPECIFICATION ( SPEC. ) : 0.60x6.75x10.15-E  
 MATERIAL : AISI 304 STAINLESS STEEL

(3) SPRING ( PASSIVATED IN SURFACE )  
 PART NUMBER ( P/N. ) : TENG000034C  
 DESCRIPTION ( DESC. ) : 92-92-632-10-508  
 SPECIFICATION ( SPEC. ) : 0.35x6.60x14.50-C  
 MATERIAL : AISI 304 STAINLESS STEEL

(6) REMARKS :  
 a) INSTALLATION FORCE : SUGGESTION FOR PROVIDING THE FORCE OF 100 TO 700 LBS  
 b) SUGGESTION HOLE DIA. = 8.79 - 8.81 MM  
 THICKNESS OF STEEL PLATE = 2.00 MM.  
 ( BEING SUITABLE TO LATEST EUROPEAN RoHS STANDARD IN 2,014 YEAR ! )

鄧記有限公司 Tengscrew Co., Ltd.		Client's Name			
		Approval No.		Part No.	
NAME	Floating-Style-M5xP.0.80x27.00 MM			APPROVED	Johnson
TOL. ±	1 PLC	2 PLC	ANGLE	UNIT	inch
MATERIAL	SEE NOTE			SCALE	4:1
FINISH	SEE NOTE			DATE	APR-03-2014
THE 3RD PROJECTION		DWG. AND PART NO.		REV.	0A
		TENG000034		1/1	

PROPRIETARY NOTE: THIS SHEET OF ENGINEERING DRAWINGS AND SPECIFICATIONS OF TENGSCREW CO., LTD. THIS DOCUMENT MAY NOT BE TRANSFERRED OR COPIED WITHOUT THE EXPRESS WRITTEN AUTHORIZATION OF TENGSCREW. IN ADDITIONAL, NEITHER THIS SHEET NOR THE INFORMATION IT CONTAINS MAY BE USED BY OR DISCLOSED TO ANY THIRD PARTY WITHOUT TENGSCREW'S EXPRESS WRITTEN CONSENT.

5

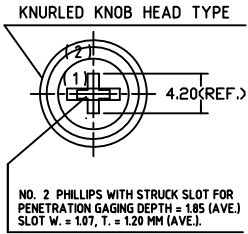
5

A B C D E F G H

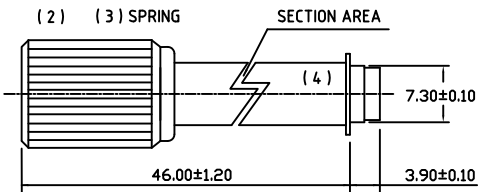
A	B
UNIT	MM

DWG. & P/N = TENG000003

REVISIONS			
LTR	DESCRIPTION	DATE	APP.

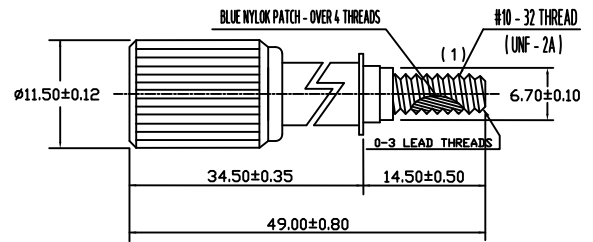


NO. 2 PHILLIPS WITH STRUCK - SLOTTED

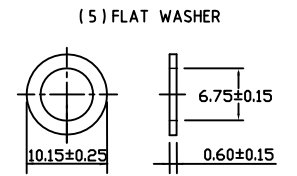


( Thread In The Cylinder )

UN-FASTENED



FASTENED



WHEN ROLL THE CYLINDER OVER THE WASHER TO CAPTIVATE THE ASSEMBLY ITS TOTAL THICKNESS ARE INCLUDED STEEL LEAST THICKNESS TOTAL BEING SITUATION WILL BE AT LEAST 3.50 MM FOR TOTAL THICKNESS. CAUTION : EXCESSIVE FORCE WILL DAMAGE THE SCREW ASSEMBLY !

MOUNTING WASHER

( 1 ) SCREW ( HARD+ELECTRODEPOSITION COATING - BLACK 黑色吊電電著塗裝處理 ) WITH FRONT THRAD BY NYLON PATCH ) PART NUMBER ( P/N. ) : TENG000003A DESCRIPTION ( DESC. ) : 92-22-692-10-1032 SPECIFICATION ( SPEC. ) : 8.45x49.00-A MATERIAL : SAE 1018 CARBON STEEL TORSIONAL STRENGTH : 55.00 KGF-CM FOR SCREW'S MINI. VALUED.

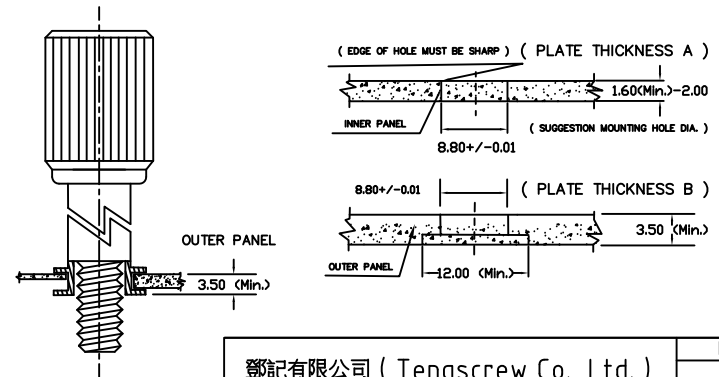
( 4 ) CYLINDER ( DARK BLACK - ANODIZING 黑色霧面吊電陽極處理 ) PART NUMBER ( P/N ) : TENG000003D DESCRIPTION ( DESC. ) : 92-22-692-10-1032 SPECIFICATION ( SPEC. ) : 9.00x34.80-D MATERIAL : AISI 6061 ALUMINIUM

( 5 ) FLAT WASHER ( PASSIVATE IN SURFACE ) PART NUMBER ( P/N ) : TENG000003E DESCRIPTION ( DESC. ) : 92-22-692-10-1032 SPECIFICATION ( SPEC. ) : 0.60x6.75x10.15-E MATERIAL : AISI 304 STAINLESS STEEL

( 6 ) REMARKS :  
a) INSTALLATION FORCE : SUGGESTION FOR PROVIDING THE FORCE OF 100 TO 700 LBS  
b) SUGGESTION HOLE DIA.= 8.79 - 8.81 MM THICKNESS OF STEEL PLATE = 2.00 MM.

( BEING SUITABLE TO LATEST EUROPEAN RoHS STANDARD IN 2,012 YEAR ! )

Panel Preparation and Installation



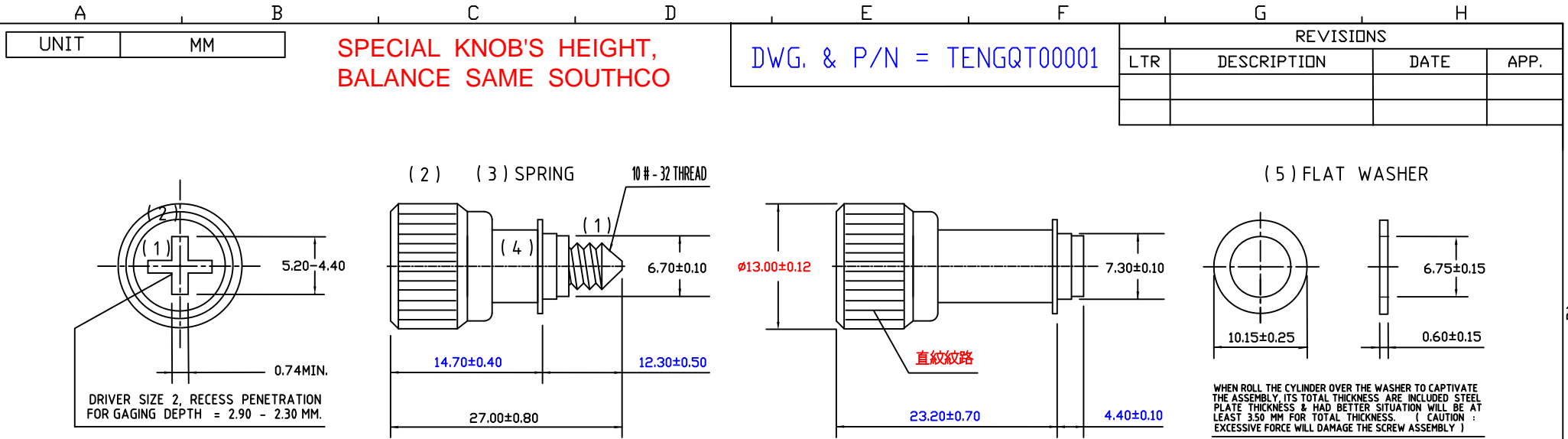
MOUNTING ANGLES COULD BE SUITABLE TO 60°-90° BY THE ACTUAL MAKER APPLICATIONS

( 2 ) KNOB ( DARK BLACK - ANODIZING 黑色霧面吊電陽極處理 ) PART NUMBER ( P/N. ) : TENG000003B DESCRIPTION ( DESC. ) : 92-22-692-10-1032 SPECIFICATION ( SPEC. ) : 11.50x16.80-B MATERIAL : AISI 6061 ALUMINIUM

( 3 ) SPRING ( PASSIVATED IN SURFACE ) PART NUMBER ( P/N. ) : TENG000003C DESCRIPTION ( DESC. ) : 92-22-692-10-1032 SPECIFICATION ( SPEC. ) : 0.35x6.70x36.50-C MATERIAL : AISI 304 STAINLESS STEEL

鄧記有限公司 ( Tengscrew Co., Ltd. )						MODEL
NAME	Long-Floating-Style-#10-32x49.00 MM				APPROVED	JOHNSON
TOL. ±	1 PLC	2 PLC	ANGLE	UNIT	inch	DESIGNED
MATERIAL	AISI 6061 ALUMINIUM			SCALE	4:1	DRAWN
FINISH	DARK-BLACK-ANODIZING		DATE	APR-25-2012	REV.	0B
THE 3RD PROJECTION				DWG. AND PART NO.	TENG000003	1/1

PROPRIETARY NOTE: THIS SHEET OF ENGINEERING DRAWINGS AND SPECIFICATIONS OF TENGSCREW CO., LTD. THIS DOCUMENT MAY NOT BE TRANSFERRED OR COPIED WITHOUT THE EXPRESS WRITTEN AUTHORIZATION OF TENGSCREW. IN ADDITIONAL, NEITHER THIS SHEET NOR THE INFORMATION IT CONTAINS MAY BE USED BY OR DISCLOSED TO ANY THIRD PARTY WITHOUT TENGSCREW'S EXPRESS WRITTEN CONSENT.



REVISIONS			
LTR	DESCRIPTION	DATE	APP.

NO. 2 PHILLIPS

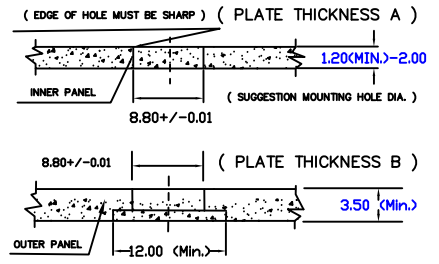
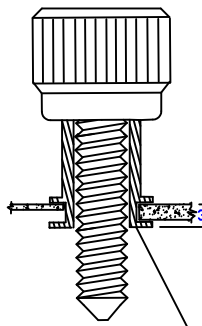
FASTENED

UN-FASTENED

Panel Preparation and Installation

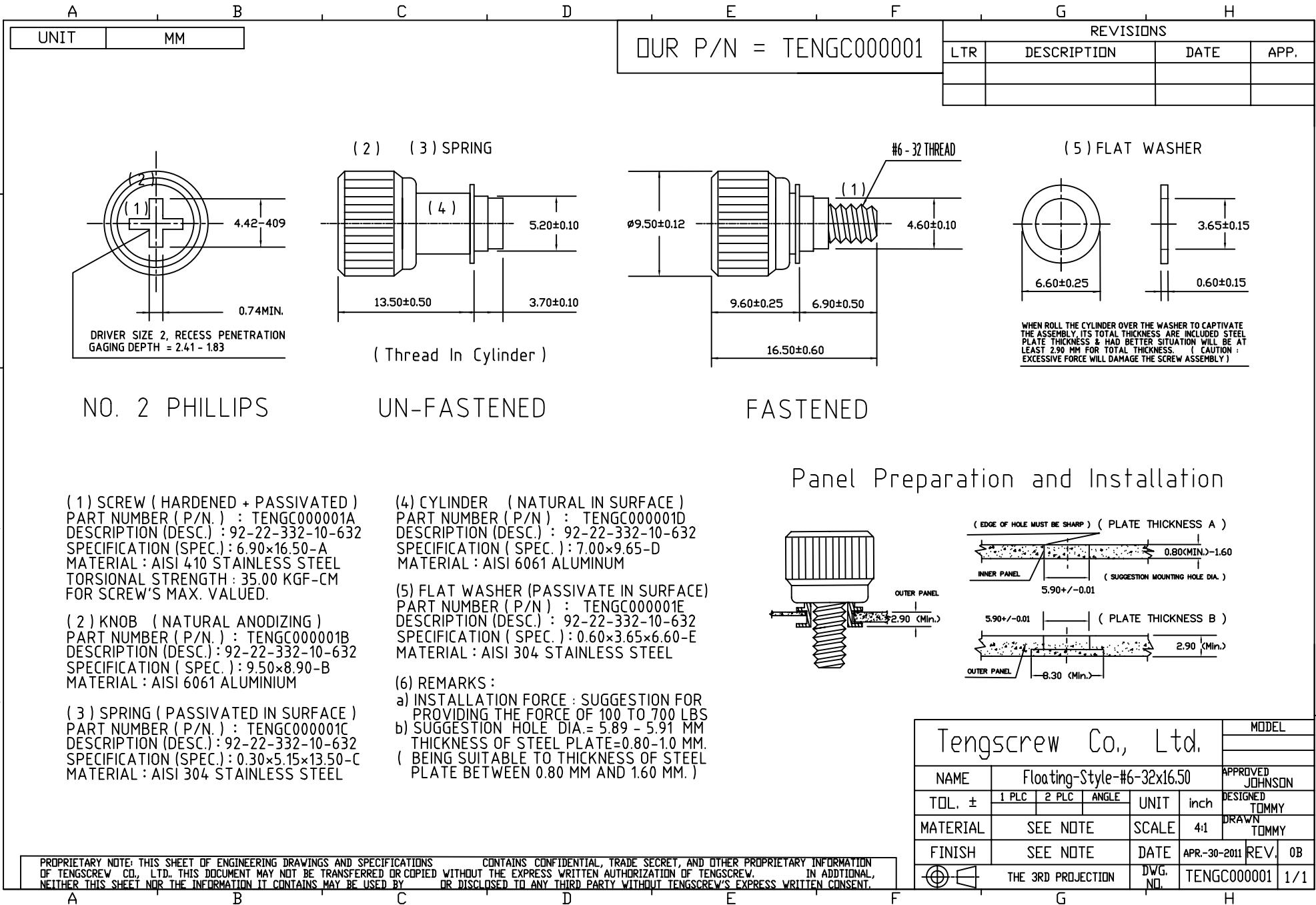
- (1) SCREW ( HARDENED + BLACK-ZINC )  
PART NUMBER ( P/N. ) : TENGRO0001A  
DESCRIPTION ( DESC. ) : 92-22-632-10-1032  
SPECIFICATION ( SPEC. ) : 8.40×27.00-A  
MATERIAL : AISI 410 STAINLESS STEEL
- (2) KNOB ( BLACK ANODIZING )  
PART NUMBER ( P/N. ) : TENGRO0001B  
DESCRIPTION ( DESC. ) : 92-22-632-10-1032  
SPECIFICATION ( SPEC. ) : 13.00×10.20-B  
MATERIAL : AISI 6061 ALUMINIUM
- (3) SPRING ( PASSIVATED IN SURFACE )  
PART NUMBER ( P/N. ) : TENGRO0001C  
DESCRIPTION ( DESC. ) : 92-22-632-10-1032  
SPECIFICATION ( SPEC. ) : 0.35×6.60×14.50-C  
MATERIAL : AISI 304 STAINLESS STEEL  
BEING ACCOMPANIED BY RoHS STANDARD !  
( SAME SOUTHCO & QUANTA SPEC. )

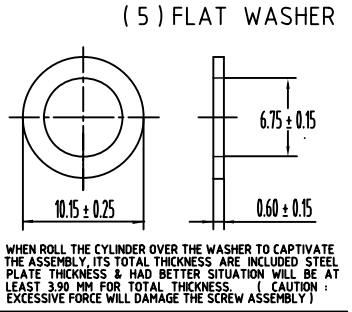
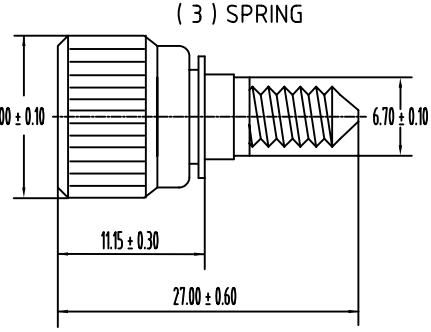
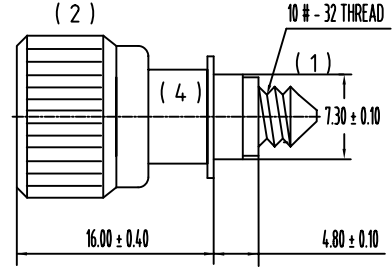
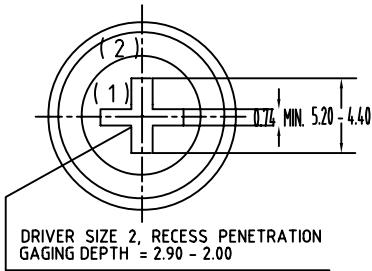
- (4) CYLINDER ( NATURAL IN SURFACE )  
PART NUMBER ( P/N. ) : TENGRO0001D  
DESCRIPTION ( DESC. ) : 92-22-632-10-1032  
SPECIFICATION ( SPEC. ) : 10.40×18.50-D  
MATERIAL : AISI 6061 ALUMINIUM
- (5) FLAT WASHER ( PASSIVATE IN SURFACE )  
PART NUMBER ( P/N. ) : TENGRO0001E  
DESCRIPTION ( DESC. ) : 92-22-632-10-1032  
SPECIFICATION ( SPEC. ) : 0.60×6.75×10.15-E  
MATERIAL : AISI 304 STAINLESS STEEL
- (6) REMARKS :  
a) INSTALLATION FORCE : SUGGESTION FOR PROVIDING THE FORCE OF 100 TO 700 LBS  
b) SUGGESTION HOLE DIA. = 8.79 - 8.81 MM  
THICKNESS OF STEEL PLATE = 2.00 MM.  
( BEING SUITABLE TO THICKNESS OF STEEL PLATE BETWEEN 1.20 MM AND 2.00 MM. )



Tengscrew Co., Ltd. ( 鄧記有限公司 )					MODEL
NAME	Floating-Style-#10-32 Thread				APPROVED JOHNSON
TOL. ±	1 PLC	2 PLC	ANGLE	UNIT	MM
MATERIAL	SEE NOTE			SCALE	4:1
FINISH	SEE NOTE			DATE	16-OCT.-2012
THE 3RD PROJECTION				DWG. NO.	TENGQT00001
				REV.	0A
					1/1

PROPRIETARY NOTE: THIS SHEET OF ENGINEERING DRAWINGS AND SPECIFICATIONS OF TENGSCREW CO., LTD. THIS DOCUMENT MAY NOT BE TRANSFERRED OR COPIED WITHOUT THE EXPRESS WRITTEN AUTHORIZATION OF TENGSCREW. IN ADDITIONAL, NEITHER THIS SHEET NOR THE INFORMATION IT CONTAINS MAY BE USED BY OR DISCLOSED TO ANY THIRD PARTY WITHOUT TENGSCREW'S EXPRESS WRITTEN CONSENT.





(1) SCREW ( HARDENED + PASSIVATED )  
 PART NUMBER ( P/N. ) : TENG0000021A  
 DESCRIPTION ( DESC. ) : 92-22-632-10-1032  
 SPECIFICATION ( SPEC. ) : 8.40×27.00-A  
 MATERIAL : AISI 410 STAINLESS STEEL

(2) KNOB ( NATURAL ANODIZING )  
 PART NUMBER ( P/N. ) : TENG0000021B  
 DESCRIPTION ( DESC. ) : 92-22-632-10-1032  
 SPECIFICATION ( SPEC. ) : 13.00×10.20-B  
 MATERIAL : AISI 6061 ALUMINIUM

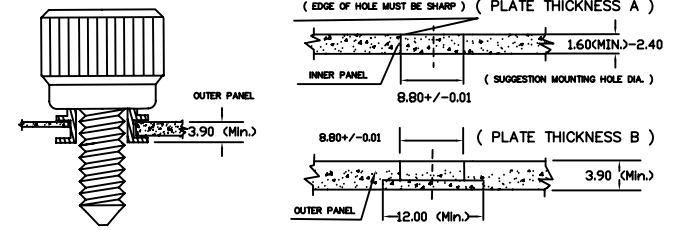
(3) SPRING ( PASSIVATED IN SURFACE )  
 PART NUMBER ( P/N. ) : TENG0000021C  
 DESCRIPTION ( DESC. ) : 92-22-632-10-1032  
 SPECIFICATION ( SPEC. ) : 0.35×6.60×14.50-C  
 MATERIAL : AISI 304 STAINLESS STEEL

(4) CYLINDER ( NATURAL IN SURFACE )  
 PART NUMBER ( P/N. ) : TENG0000021D  
 DESCRIPTION ( DESC. ) : 92-22-632-10-1032  
 SPECIFICATION ( SPEC. ) : 10.40×11.90-D  
 MATERIAL : AISI 6061 ALUMINIUM

(5) FLAT WASHER ( PASSIVATE IN SURFACE )  
 PART NUMBER ( P/N. ) : TENG0000021E  
 DESCRIPTION ( DESC. ) : 92-22-632-10-1032  
 SPECIFICATION ( SPEC. ) : 0.60×6.75×10.15-E  
 MATERIAL : AISI 304 STAINLESS STEEL

(6) REMARKS :  
 a) INSTALLATION FORCE : SUGGESTION FOR PROVIDING THE FORCE OF 100 TO 700 LBS  
 b) SUGGESTION HOLE DIA.= 8.79 - 8.81 MM  
 THICKNESS OF STEEL PLATE = 2.00 MM.  
 ( BEING SUITABLE TO THICKNESS OF STEEL PLATE BETWEEN 1.60 MM AND 2.40 MM. )

### Panel Preparation and Installation



Tengscrew Co., Ltd.						MODEL	
Floating-Style-#10-32						APPROVED JOHNSON	
RANGE	TOLERANCE	NAME	1 PLC	2 PLC	ANGLE	UNIT	inch
0-10	X	TOL. ±				SCALE	4:1
10-50	X	MATERIAL	SEE NOTE			DATE	28-Sep-06
50-100	X	FINISH	SEE NOTE			REV.	0A
100-	X	THE 3RD PROJECTION	DWG. NO.	MBS56003		REV.	1/1

PROPRIETARY NOTE: THIS SHEET OF ENGINEERING DRAWINGS AND SPECIFICATIONS CONTAINS CONFIDENTIAL, TRADE SECRET, AND OTHER PROPRIETARY INFORMATION OF TENGSCREW CO., LTD. THIS DOCUMENT MAY NOT BE TRANSFERRED OR COPIED WITHOUT THE EXPRESS WRITTEN AUTHORIZATION OF TENGSCREW CO., LTD. IN ADDITIONAL, NEITHER THIS SHEET NOR THE INFORMATION IT CONTAINS MAY BE USED BY, OR DISCLOSED TO ANY THIRD PARTY WITHOUT TENGSCREW'S EXPRESS WRITTEN CONSENT.